
REVERE HIGH SCHOOL PROJECT – Revere, MA

SCHOOL BUILDING COMMITTEE (SBC) PROJECT MEETING #32

April 7, 2022

5:30 PM

PLEASE JOIN VIA THIS WEB LINK OR DIAL-IN INFORMATION:

<https://us02web.zoom.us/j/85454621353?pwd=ZGNkSUpQUFFaVTRWNkRMS0ZWQ3FVdz09>

Call-In: (646) 558-8656 Meeting Id: 854 5462 1353 Passcode: dsp125

Agenda

1. Call Meeting to Order
2. Vote to Approve March 17th Meeting Minutes
3. Vote for Approval to Move Leftfield & Perkins Eastman March Invoices Forward for Processing
4. MSBA Process Update
 - a. MSBA Facilities Assessment Sub-Committee (“FAS”) Meeting Update
 - b. MSBA Preferred Schematic Report (“PSR”) Comment Review
5. CM-R Procurement Update
6. Schematic Design Update
 - a. Workplan & Schedule Update
 - b. Working Group Update (Site Design, Interior Design, Exterior Design, Mechanical Systems, Sustainability)
 - c. User Group Meeting Update (with School staff and Administration)
7. Public Comment
8. Other Business/Discussions
9. Vote to Adjourn Meeting

Please note: Meeting content, start times and duration are subject to change.

Meetings are recorded for note taking purposes for meeting minutes only and will not be publicly posted or distributed.

PERKINS —
EASTMAN



LEFTFIELD

THE SMART CHOICE IN PROJECT MANAGEMENT

REVERE HIGH SCHOOL



SBC APRIL 7, 2022

AGENDA

1. Call Meeting to Order
2. Vote to Approve March 17, 2022 Meeting Minutes
3. Vote to Approve March Invoices to Move Forward for Processing for Leftfield and Perkins Eastman
4. Recap Facilities Assessment Sub-Committee Meeting 3/30/22
5. Recap MSBA PSR Comments
6. CM Procurement Process
7. Recap Sub-Groups meetings
 1. Site
 2. Sustainability
 3. MEP
8. Public comment
9. Other Business/Discussions
10. Vote to Adjourn Meeting



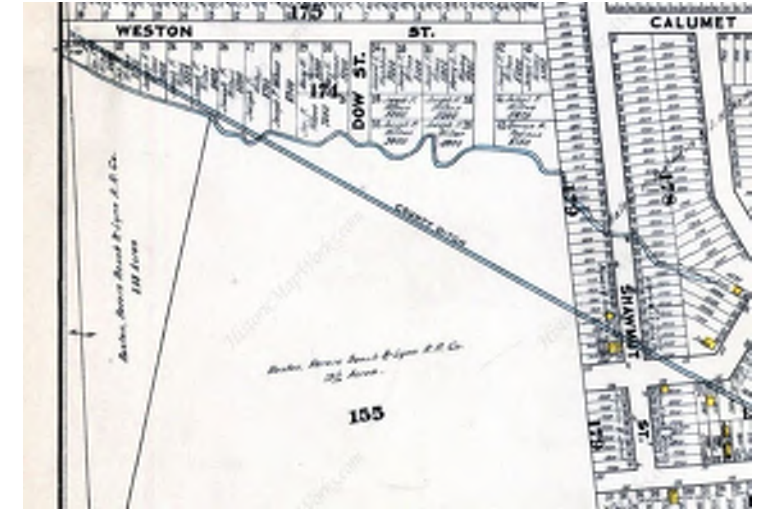
CM PROCESS UPDATE - RFQ

Thursday	Mar 31	LeftField submits notice to Central Register by 3:00 PM and City submits to COMMBUYS
Thursday	Mar 31	LeftField emails legal notice to Revere Journal
Wednesday	April 6	City/WPS posts Notice to City/Project website; Posts in City Hall
Wednesday	April 6	Notice to appear in Central Register , Revere Journal , COMMBUYS
Thursday	Apr 14	Deadline for Questions on RFQ by 5:00 PM
Friday	Apr 15	Questions and Answers and any Addenda will be posted to Link by 5:00 PM; City also posts to COMMBUYS
Wednesday	Apr 20	CMR Statement of Qualifications due at 2:00 PM at Purchasing Department, City Hall, 281 Broadway, Revere, MA 02151. LeftField distributes to Prequalification/Selection Committee.
Monday	Apr 25	Prequalification/Selection Subcommittee meets at time TBD to determine prequalified firms

CM PROCESS UPDATE - RFP

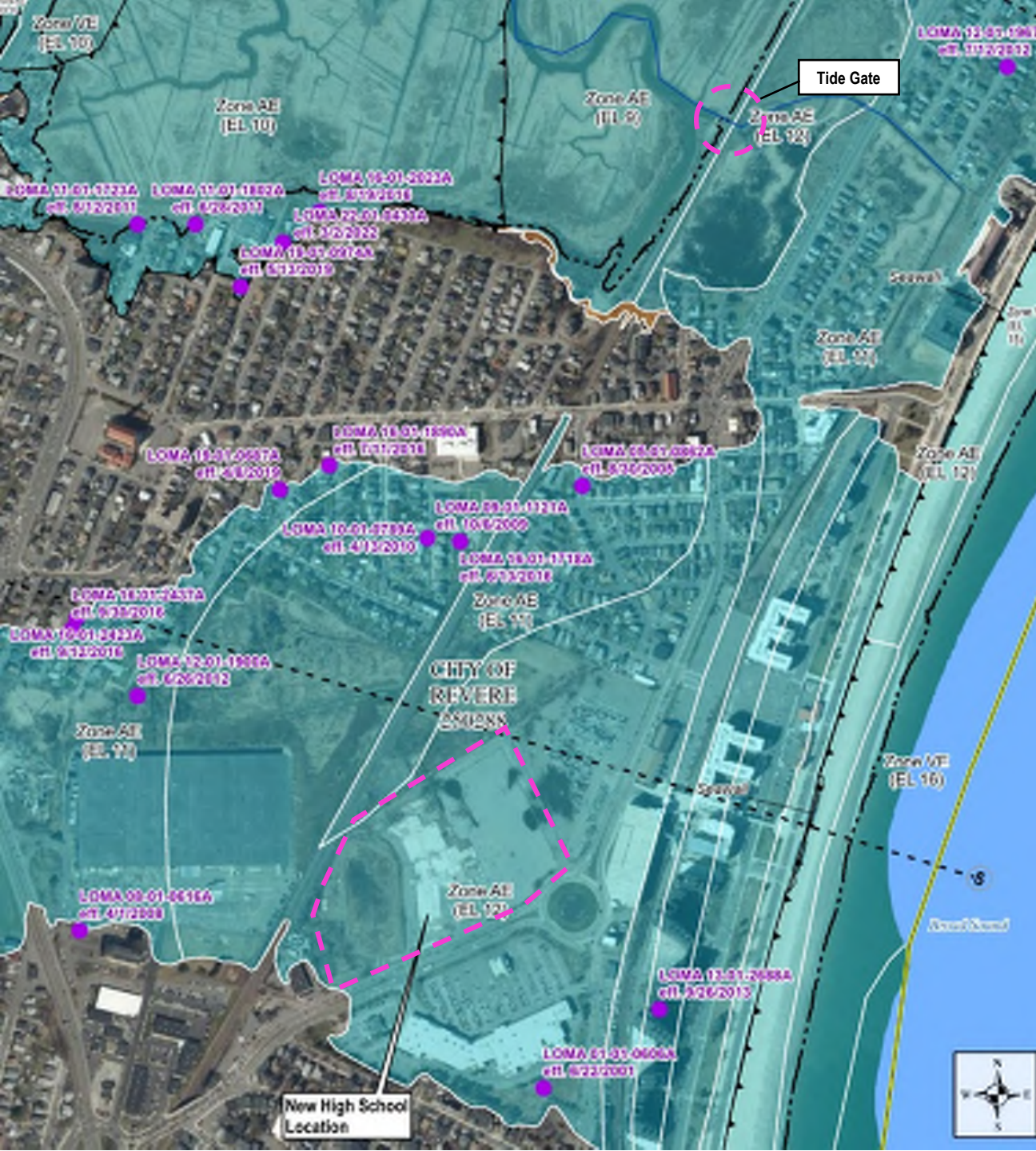
Thursday	Mar 31	LeftField submits notice to Central Register by 3:00 PM and City submits to COMMBUYS
Tuesday	Apr 26	LeftField notifies qualified and disqualified firms by email and provides CM at Risk RFP to the qualified firms
Thursday	May 5	Pre-Proposal Conference at 1:00 PM at Revere High School, 101 School Street, Revere, MA (Tentative)
Wednesday	May 11	Deadline for Questions on RFP by 5:00 PM
Thursday	May 12	LeftField emails Questions, Answers and any Addenda to qualified firms by 5:00 PM
Tuesday	May 17	CM Proposals due at 2:00 PM PM at Purchasing Department, City Hall, 281 Broadway, Revere, MA 02151. LeftField distributes proposals to Prequalification/Selection Subcommittee. LeftField notifies firms of interview times.
Thursday	May 19 TBD	Selection Subcommittee meets at time TBD to review proposals and prep for interviews.
Tuesday	May 24 TBD	Interviews with Selection Subcommittee
Wednesday	May 25	Notice of Award issued to selected CM

SITE CONSTRAINT OVERVIEW



HISTORICAL STREAM & COUNTY DITCH - 1906

- POTENTIAL WETLANDS
- FLOOD PLAINS
- COUNTY DITCH
- HISTORICAL STREAM
- SEWAGE & DRAINAGE INFRA-STRUCTURE



FEMA FLOOD INSURANCE RATE MAP

Present Day – 100-year Storm Event

There is a 1% chance of flooding every year.

The site is located around Elevation 5.
The base flood elevation (BFE) of the site is Elevation 12.

Because of the tide gate upstream, the site is protected from flooding in smaller storm events but sees a significant increase in flooding when the tide gate is overtopped by storm and coastal waters.

The approximate 100-year storm will result in 7' of flood depth over the site.

Data source: FEMA



COASTAL WATER DEPTH

2030 – 100-year Storm Event

With sea level rise, the depths of coastal flooding throughout the project site increase to 10' during the 100-year storm.

*Limited data surrounding High School site for 2030 coastal water projections.



PROBABILITY OF FLOODING DURING A SINGLE YEAR

2030

In 2030, the probability of flooding increases across the site due to sea level rise.

(POF = Probability of Flooding)

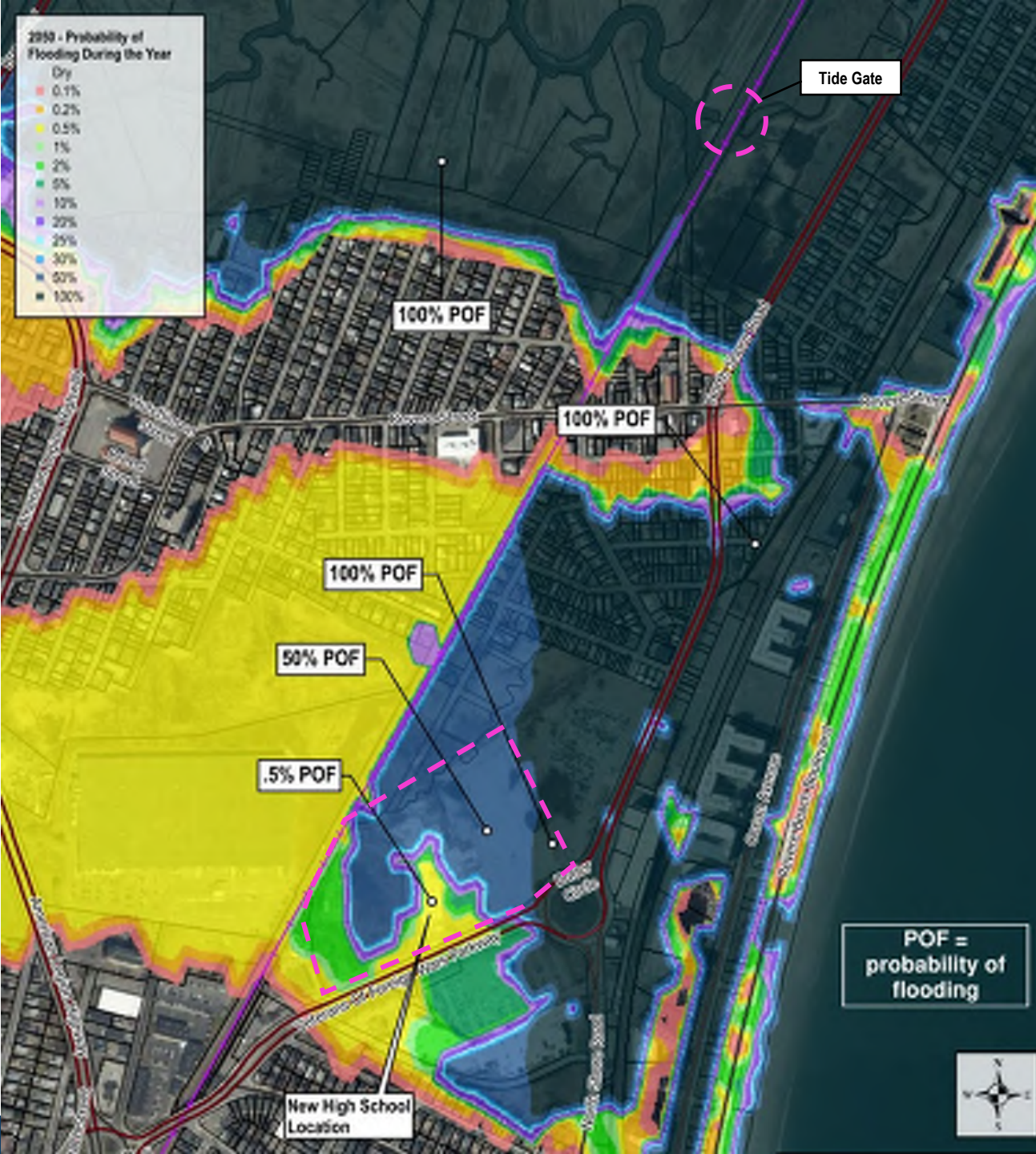


COASTAL WATER DEPTH

2050 - 100-year Storm Event

In 2050, flooding depths of 10' expand to include the majority of the site.

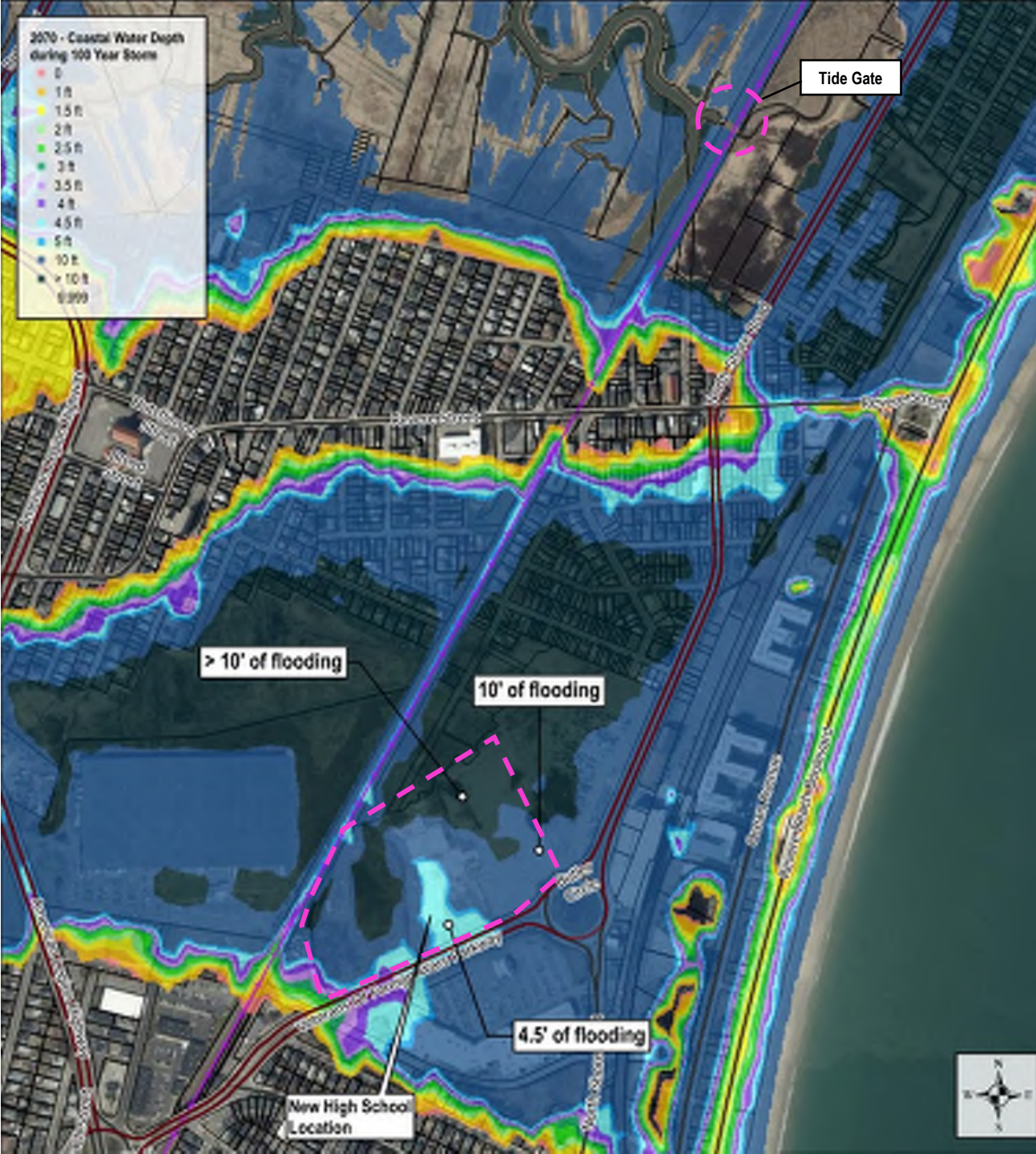
Data source: MassDOT / Woods Hole Group



PROBABILITY OF FLOODING DURING A SINGLE YEAR *2050*

In 2050, the probability of flooding continues to increase across the site due to sea level rise.

A 100% chance of flooding translates to at least one significant flooding event per year.



COASTAL WATER DEPTH

2070 – 100-year Storm Event

In 2070, the proposed High School site is projected to experience coastal flooding that exceeds 10' in depth during the 100-year storm event.

Data source: MassDOT / Woods Hole Group



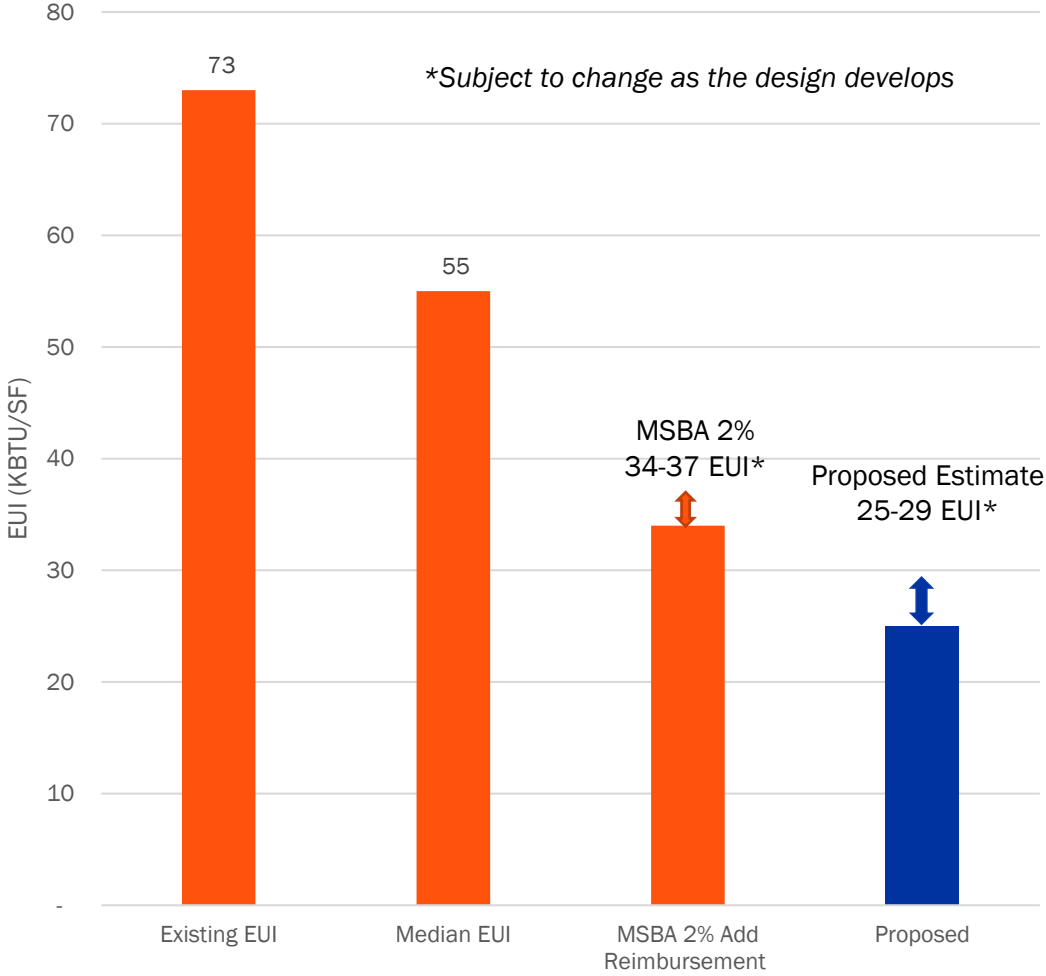
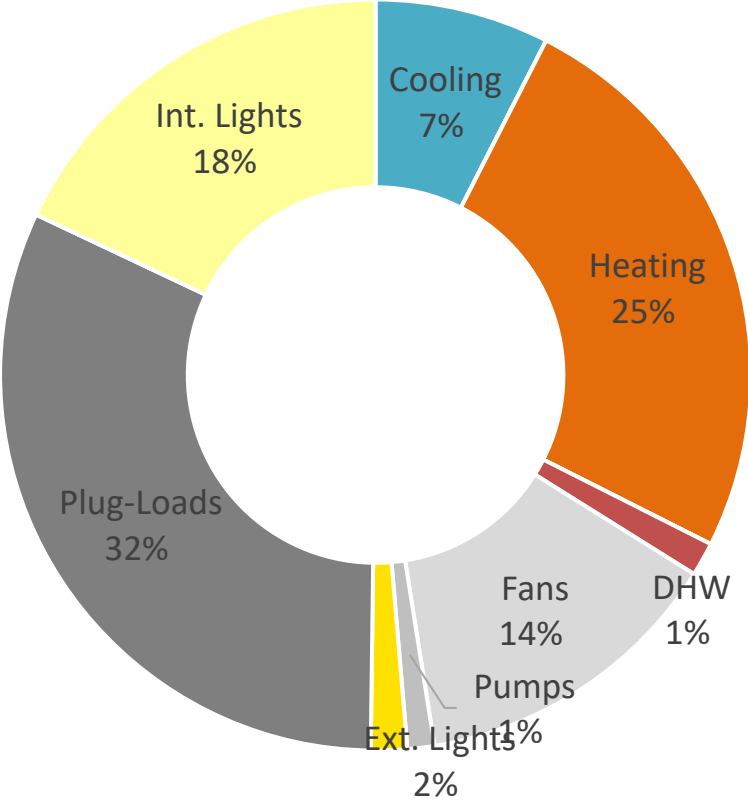
PROBABILITY OF FLOODING DURING A SINGLE YEAR 2070

In 2070, portions of the proposed high school site have a 100% chance of flooding during a single year.

A 100% chance of flooding translates to at least one significant flooding event per year.

SUSTAINABILITY

EUI breakdown-Est



SD WORKPLAN- WORKING GROUPS

REVERE HIGH SCHOOL SD WORK PLAN					
Revere , MA		Date Revised: April 7, 2022 (Module #4 Schematic Design)			
WORK PLAN					
Date	Time	Location	Activity	Description/Comment	Responsible Parties
Thursday, March 17, 2022			Building Committee Meeting	Introduction to SD - review plans, site	Arch/District/OPM
Thursday, March 24, 2022	2:00	Virtual	MEP Focus Group Meeting	Continue discussion on MEP systems	Designer/District
Wednesday, March, 23 2022	9:00	Virtual	Site Engineering Meeting	underground utilities / ditches -	Designer/City
Friday, March 25, 2022	3:00	Virtual	Site Focus Group	Site - flood plain strategies	Designer/District
Thursday, March 31, 2022	2:00	Virtual	Sustainability Working Group	Overview - goal setting	Designer/District
Thursday, March 31, 2022	2:00	Virtual	Transportation	Review current site design with transporation manager	Designer/District
Tuesday, April 5, 2022	2:00	Virtual	MEP Focus Group Meeting	Continue discussion on MEP Systems	Designer/District
Wednesday, April 6, 2022	9:00	Virtual	Auditoirum		Designer/District
Thursday, April 7, 2022			Building Committee Meeting	Review plan, site update and changes	
4/11 thru 5/6			User Group Interviews	Meet with all staff, teachers -	Designer/District
Friday, April 8, 2022	3:00	Virtual	MEP Focus Group Meeting	Continue discussion on MEP systems - diagrams	Designer/District
Tuesday, April 12, 2022	2:00	Virtual	Sustainability Working Group	Site, water, energy	Designer/District
Wednesday, April 13, 2022	10:00	Virtual	Interiors / Exteriors Working Group	Precedents - Arch of Revere -	Designer/District
Wednesday, April 13, 2022	8:30	Virtual	Site Focus Group		
Friday, April 15, 2022	2:00	Virtual	MEP Focus Group Meeting	Plumbing and Fuel Sources	
			Outdoor Athletics		
Tuesday, April 26, 2022	2:00	Virtual	Auditoirum		Theater Designer / District
			Kitchen		Crabtree / District
Thursday, April 28, 2022			Building Committee Meeting	Design Review - prep for Community Meeting #1	
Thursday, May 19, 2022			Building Committee Meeting	Design Review	



PERKINS —
EASTMAN



LEFTFIELD
THE SMART CHOICE IN PROJECT MANAGEMENT

REVERE HIGH SCHOOL

SBC MARCH 17, 2022