



TYPICAL CLASSROOM (GENERAL- GR. 10-12)

FUNCTIONAL CRITERIA

Description: primary teaching and learning space
 Area: 900sf Classrooms
 Quantity: 58
 Occupants: +/- 24 students+ teacher

Security:

outlet, data projector, sound reinforcement & wireless clock
 CR entry doors are set-up to be locked when closed (single function/dead-bolt) and have an easy release automatic closer. The doors have keyed access from the corridor side and egress is always permitted classroom side. Glass sidelights are provided with out-of-sight zones within the room. In room communications and public address systems are provided

LOCATION/ORIENTATION CRITERIA

Users: teachers and students
 Adjacencies: Science, Flex Learning, Teacher Planning
 Orientation: north/south exposure for daylight control
 Views: Courtyard/Ocean

Acoustical:

Refer to Acoustical Report

Mechanical:

Refer to Mechanical Narrative

Plumb/Fire:

Refer to plumbing/fire protection narrative

TECHNICAL CRITERIA

Floor/Base: linoleum tile floor/ rubber base
 Walls: multi-layer gypsum wall board, fry-reglet at 8'-0", painted
 Ceiling: high light reflectance ceiling tile (.90 LRV); slopes from 8'-8" up to 10'-8" at windows
 Door/Frame: solid wood door and 3' wide sidelight glass with solid roller shade
 Windows: thermally broken aluminum frames, w/ operable awnings; triple glazed, hurricane glass. Insect screens and mesh roll down mesh shade (10% open.) Built-in gwb light shelf at south facing windows
 Lighting: LED pendant direct/indirect with daylight dimming and occupancy sensors
 Power: convenience outlets w/ USB
 Data/Com: telephone at desk, intercom, wireless access point, data outlets, presentation

FIXTURES / FURNISHINGS

Casework: Upper/Lower Cabinets, Tall Storage Units
 Furnishings: Student Desks, Student Chairs, Teacher Desk with file pedestal, Teacher Task Chair, Mobile Presentation Lectern, Bookcases, White Boards, Tackboards
 Equipment: Teacher Computer
 Storage: In-room Cabinets as noted above

OTHER INFORMATION:

Visibility: Sidelights at doorway entrances are compatible with the District's standards related to visibility from the corridor.





TYPICAL CLASSROOM (FRESHMAN- GR. 9)

FUNCTIONAL CRITERIA

Description: primary teaching and learning space
 Area: 850sf Classrooms
 Quantity: 19
 Occupants: +/- 24 students+ teacher

LOCATION/ORIENTATION CRITERIA

Users: teachers and students
 Adjacencies: Science, Flex Learning, Teacher Planning
 Orientation: north/south exposure for daylight control
 Views: Courtyard/Ocean

TECHNICAL CRITERIA

Floor/Base: linoleum tile floor/ rubber base
 Walls: multi-layer gypsum wall board, fry-reglet at 8'-0", painted
 Ceiling: high light reflectance ceiling tile (.90 LRV); slopes from 8'-8" up to 10'-8" at windows
 Door/Frame: solid wood door and 3' wide sidelight glass with solid roller shade
 Windows: thermally broken aluminum frames, w/ operable awnings; triple glazed, hurricane glass. Insect screens and mesh roll down mesh shade (10% open.) Built-in gwb light shelf at south facing windows
 Lighting: LED pendant direct/indirect with daylight dimming and occupancy sensors
 Power: convenience outlets w/ USB
 Data/Com: telephone at desk, intercom, wireless access point, data outlets, presentation

Security: outlet, data projector, sound reinforcement & wireless clock
 CR entry doors are set-up to be locked when closed (single function/dead-bolt) and have an easy release automatic closer. The doors have keyed access from the corridor side and egress is always permitted classroom side. Glass sidelights are provided with out-of-sight zones within the room. In room communications and public address systems are provided

Acoustical: Refer to Acoustical Report
 Mechanical: Refer to Mechanical Narrative
 Plumb/Fire: Refer to plumbing/fire protection narrative

FIXTURES / FURNISHINGS

Casework: Upper/Lower Cabinets, Tall Storage Units
 Furnishings: Student Desks, Student Chairs, Teacher Desk with file pedestal, Teacher Task Chair, Mobile Presentation Lectern, Bookcases, White Boards, Tackboards
 Equipment: Teacher Computer
 Storage: In-room Cabinets as noted above

OTHER INFORMATION:

Visibility: Sidelights at doorway entrances are compatible with the District's standards related to visibility from the corridor.





TEACHER PLANNING

FUNCTIONAL CRITERIA

Description: teacher planning, meeting, copy and work space for staff
 Area: 700sf
 Quantity: 11 total
 Occupants: 10-12

LOCATION/ORIENTATION CRITERIA

Users: teachers, potentially students and parents
 Adjacencies: central within each academic wing
 Orientation: varies
 Views: varies

TECHNICAL CRITERIA

Floor/Base: linoleum tile floor/ rubber base
 Walls: multi-layer gypsum wall board, fry-reglet at 8'-0", painted
 Ceiling: high light reflectance ceiling tile (.90 LRV); at 9'-0" AFF
 Door/Frame: solid wood door and 3' wide sidelight glass with solid roller shade
 Windows: thermally broken aluminum frames, w/ operable awnings; triple glazed, hurricane glass. Insect screens and mesh roll down mesh shade (10% open.) Built-in gwb light shelf at south facing windows
 Lighting: LED pendant direct/indirect with daylight

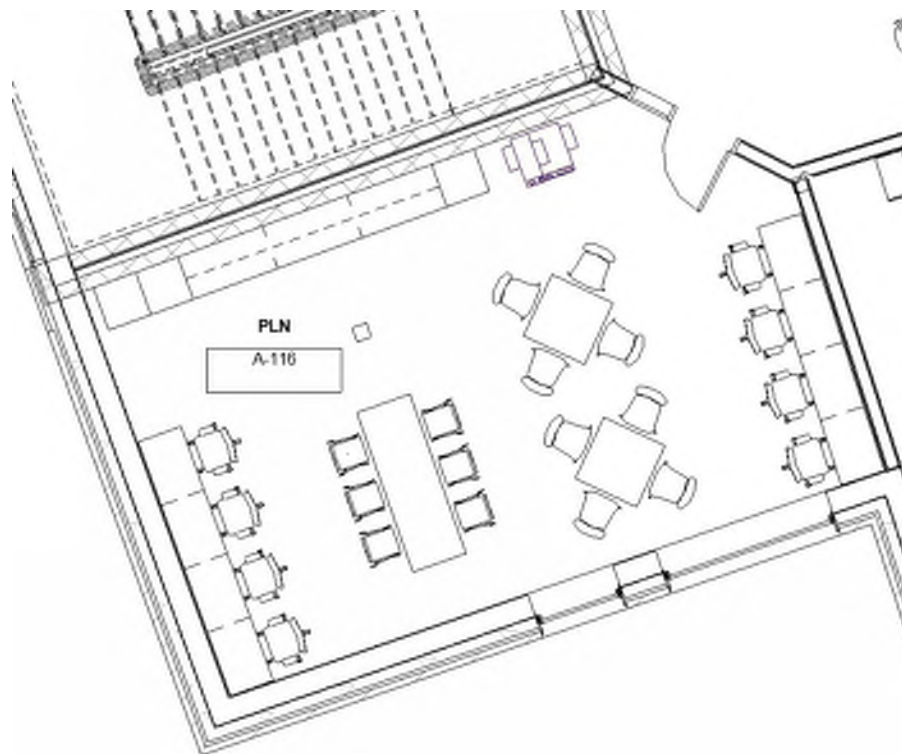
Power: dimming and occupancy sensors
 convenience outlets w/ USB
 Data/Com: telephone at desk, intercom, wireless access point, data outlets, presentation outlet, data projector, sound reinforcement & wireless clock
 Security: Similar to Classrooms along with forced entry protection on the corridor side.
 Acoustical: Refer to Acoustical Report
 Mechanical: Refer to Mechanical Narrative
 Plumb/Fire: Refer to plumbing/fire protection narrative

FIXTURES / FURNISHINGS

Casework: Workstations with Shelving Above, Tall Storage Cabinets
 Furnishings: Meeting tables, Guest Chairs, Cafe Tables, Barstools, White Boards, TackBoards, Filing/Lockers
 Equipment: Copier/Printer
 Storage: In-room Cabinets as noted above

OTHER INFORMATION:

Visibility: Sidelights at doorway entrances are compatible with the District's standards related to visibility from the corridor.





SMALL GROUP SEMINAR (EL)

FUNCTIONAL CRITERIA

Description: primary teaching and learning space
 Area: 600sf Classrooms
 Quantity: 19
 Occupants: +/- 24 students+ teacher

LOCATION/ORIENTATION CRITERIA

Users: teachers and students
 Adjacencies: Science, Flex Learning, Teacher Planning
 Orientation: north/south exposure for daylight control
 Views: Courtyard/Ocean

TECHNICAL CRITERIA

Floor/Base: linoleum tile floor/ rubber base
 Walls: multi-layer gypsum wall board, fry-reglet at 8'-0", painted
 Ceiling: high light reflectance ceiling tile (.90 LRV); slopes from 8'-8" up to 10'-8" at windows
 Door/Frame: solid wood door and 3' wide sidelight glass with solid roller shade
 Windows: thermally broken aluminum frames, w/ operable awnings; triple glazed, hurricane glass. Insect screens and mesh roll down mesh shade (10% open.) Built-in gwb light shelf at south facing windows
 Lighting: LED pendant direct/indirect with daylight dimming and occupancy sensors
 Power: convenience outlets w/ USB
 Data/Com: telephone at desk, intercom, wireless access point, data outlets, presentation

Security: outlet, data projector, sound reinforcement & wireless clock
 CR entry doors are set-up to be locked when closed (single function/dead-bolt) and have an easy release automatic closer. The doors have keyed access from the corridor side and egress is always permitted classroom side. Glass sidelights are provided with out-of-sight zones within the room. In room communications and public address systems are provided

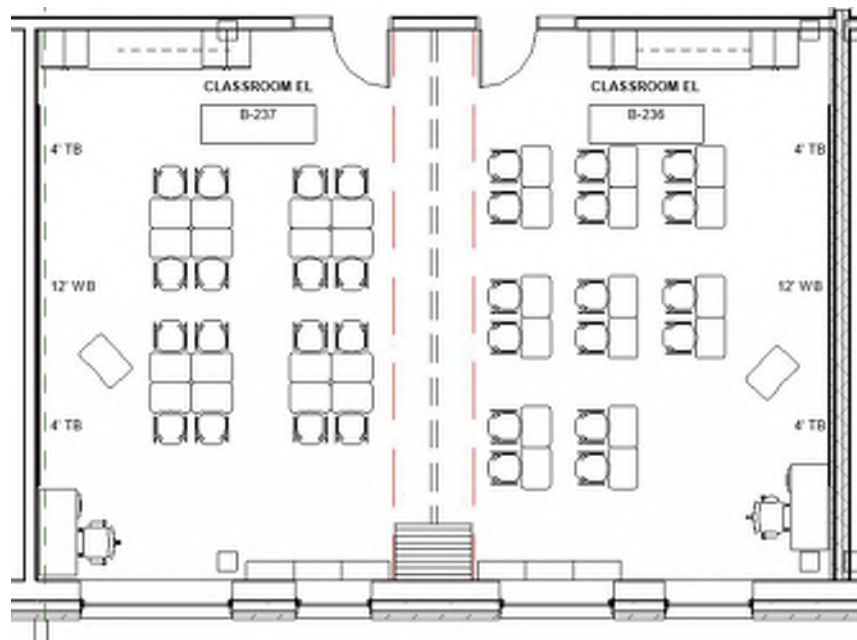
Acoustical: Refer to Acoustical Report
 Mechanical: Refer to Mechanical Narrative
 Plumb/Fire: Refer to plumbing/fire protection narrative

FIXTURES / FURNISHINGS

Casework: Upper/Lower Cabinets, Tall Storage Units
 Furnishings: Student Desks, Student Chairs, Teacher Desk with file pedestal, Teacher Task Chair, Mobile Presentation Lectern, Bookcases, White Boards, Tackboards
 Equipment: Teacher Computer
 Storage: In-room Cabinets as noted above

OTHER INFORMATION:

Visibility: Sidelights at doorway entrances are compatible with the District's standards related to visibility from the corridor.





SCIENCE ROOMS AND SCIENCE PREP ROOMS

FUNCTIONAL CRITERIA

Description: teaching and learning lab
 Area: 1440sf lab, 400 sf prep
 Quantity: 21 labs, 11 prep rooms
 Occupants: +/- 28 students+ teacher

Security: reinforcement & wireless clock
 Similar to Typical Classrooms.
 Acoustical: Refer to Acoustical Report
 Mechanical: Refer to Mechanical Narrative
 Plumb/Fire: Refer to plumbing/fire protection narrative

LOCATION/ORIENTATION CRITERIA

Users: teachers and students
 Adjacencies: paired labs with shared prep between, central to CRs on each academic floor
 Orientation: north/south exposure for daylight control
 Views: Courtyard/Ocean

FIXTURES / FURNISHINGS

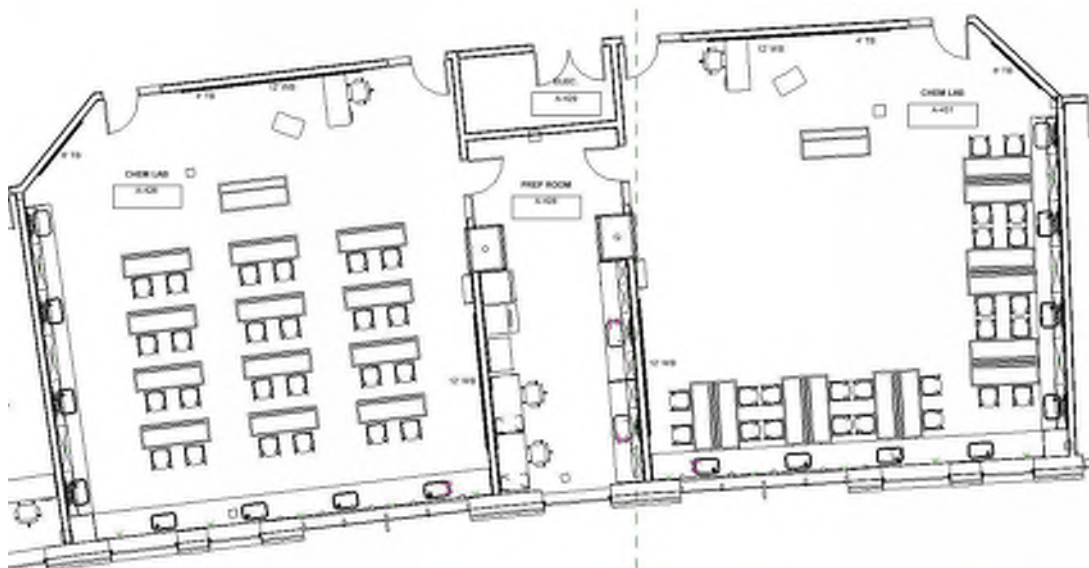
Casework: Perimeter epoxy lab counters with upper/lower cabinets, lab sinks, 1 ADA sink, tall storage units, safety goggle sterilizer, mobile student tables with epoxy surface
 Furnishings: Student stools, teacher desk with file pedestal, teacher task chair, mobile presentation lectern
 Equipment: Double sided pass-through fume hood, full size refrigerator, dish washer, acid/flammable cabinets, teacher computer, IctE MaChInE
 Storage: In-room Cabinets as noted above

TECHNICAL CRITERIA

Floor/Base: linoleum tile floor/ rubber base
 Walls: multi-layer gypsum wall board, fry-reglet at 8'-0", painted
 Ceiling: high light reflectance ceiling tile (.90 LRV); slopes from 8'-8" up to 10'-8" at windows
 Door/Frame: solid wood door and 3' wide sidelight glass with solid roller shade
 Windows: thermally broken aluminum frames, w/ operable awnings; triple glazed, hurricane glass. Insect screens and mesh roll down mesh shade (10% open.) Built-in gwb light shelf at south facing windows
 Lighting: LED pendant direct/indirect with daylight dimming and occupancy sensors
 Power: convenience outlets located above counters, cabinet face & overhead (reels)
 Data/Com: telephone at desk, intercom, wireless access point, data outlets, presentation outlet, data projector, sound

OTHER INFORMATION:

Visibility: Sidelights at doorway entrances are compatible with the District's standards related to visibility from the corridor.





SPECIAL EDUCATION - LIFE SKILLS LABS

FUNCTIONAL CRITERIA

Description: specialized instruction space for students with severe needs to get hands-on guided learning toward domestic independence

Area: 1,440sf

Quantity: 3

Occupants: -

LOCATION/ORIENTATION CRITERIA

Users: special education students and teachers

Adjacencies: -

Orientation: -

Views: -

TECHNICAL CRITERIA

Floor/Base: linoleum tile floor/rubber base

Walls: multi-layer gypsum board, painted

Ceiling: high light reflectance ceiling tile (.90 LRV)

Door/Frame: solid wood doors with acoustic gaskets & 3' w. glass sidelight with solid roller shade

Windows: thermally broken aluminum frames, w/ operable awnings; triple glazed, hurricane glass. Insect screens and mesh roll down mesh shade (10% open.) Built-in gwb light shelf at south facing windows

Lighting: LED pendant direct/indirect with daylight dimming and occupancy sensors

Power: convenience outlets w/ USB

Data/Com: telephone, intercom, wireless access point, data outlets, presentation outlet, data projector, sound reinforcement & wireless clock

Security: CR entry doors are set-up to be locked when closed (single function/dead-bolt)

and have an easy release automatic closer. The doors have keyed access from the corridor side and egress is always permitted classroom side. Glass sidelights are provided with out-of-sight zones within the room. In room communications and public address systems are provided

Acoustical: Refer to Acoustical Report

Mechanical: Refer to Mechanical Narrative

Plumb/Fire: Refer to plumbing/fire protection narrative

FIXTURES / FURNISHINGS

Casework: Sink counter with upper/lower cabinets, tall storage cabinets

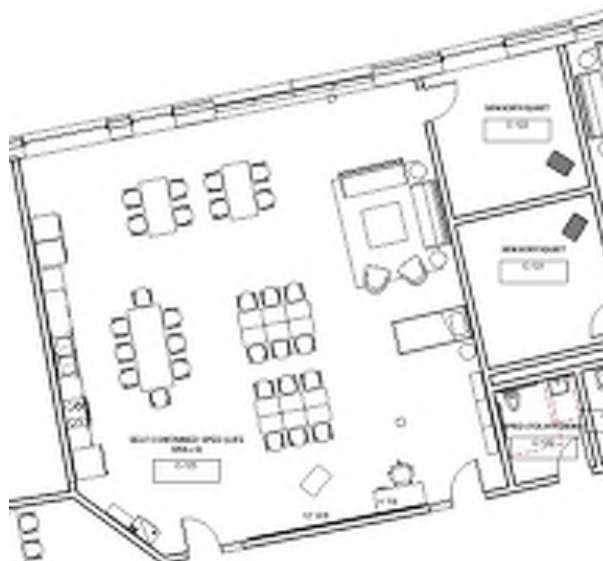
Furnishings: Teacher desk with file pedestal, teacher task chair, mobile presentation lectern, bookcase, student desks/tables, student chairs, dining table and chairs, mock bedroom set, living room sofa, side tables, area rug, entertainment system, white boards, tack boards

Equipment: Ironing board, conventional oven with cook top, exhaust hood, dishwasher, ADA oven, refrigerator, microwave, washer/dryer, teacher computer

Storage: In-room Cabinets as noted above

OTHER INFORMATION:

Visibility: Sidelights at doorway entrances are compatible with the District's standards related to visibility from the corridor.





SPECIAL EDUCATION - SMALL GROUP ROOMS (SLGs/CONCEPTS)

FUNCTIONAL CRITERIA

Description: specialized instruction space for students with individual educational plans to get small group instruction and support toward academic independence

Area: 700sf Class + 60sf Toilet

Quantity: 7

Occupants: 15

Furnishings: Teacher desk with file pedestal, teacher task chair, mobile presentation lectern, bookcase, lateral file, student desks/tables, student chairs, area rug, divider partition, white boards, tack boards

Equipment: Teacher computer

Storage: In-room Cabinets as noted above

LOCATION/ORIENTATION CRITERIA

Users: special education students/teachers/specialists

Adjacencies: General Classrooms

Orientation: north/south exposure for daylight control

Views: outside

OTHER INFORMATION

Visibility: Sidelights at doorway entrances are compatible with the District's standards related to visibility from the corridor.

TECHNICAL CRITERIA

Floor/Base: linoleum tile floor/rubber base (epoxy floor/base at toilets)

Walls: multi-layer gypsum board, painted at new (cmu walls at toilets)

Ceiling: high light reflectance ceiling tile (.90 LRV); MR gypsum at toilets

Door/Frame: solid wood doors with acoustic gaskets & 3' w. glass sidelight with solid roller shade

Windows: thermally broken aluminum frames, w/ operable awnings; triple glazed, hurricane glass. Insect screens and mesh roll down mesh shade (10% open.) Built-in gwb light shelf at south facing windows

Lighting: LED pendant direct/indirect with daylight dimming and occupancy sensors

Power: convenience outlets w/ USB

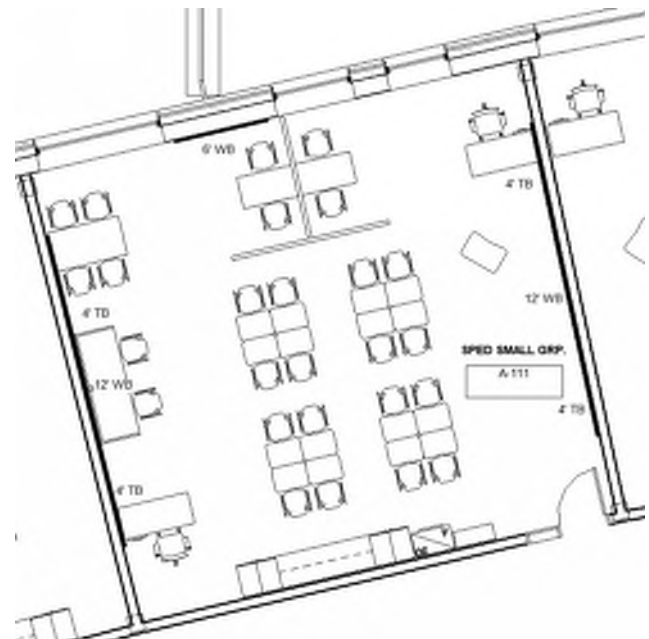
Data/Com: telephone, intercom, wireless access point, data outlets, presentation outlet, data projector, sound reinforcement & wireless clock

Security: CR entry doors are set-up to be locked when closed (single function/dead-bolt) and have an easy release automatic closer. The doors have keyed access from the corridor side and egress is always permitted classroom side. Glass sidelights are provided with out-of-sight zones within the room. In room communications and public address systems are provided

Acoustical: Refer to Acoustical Report

Mechanical: Refer to Mechanical Narrative

Plumb/Fire: Refer to plumbing/fire protection narrative



FIXTURES / FURNISHINGS

Casework: Upper/lower cabinets, tall storage cabinets



SPECIAL EDUCATION-SLG/CONCEPTS SCIENCE ROOMS

FUNCTIONAL CRITERIA

Description: teaching and learning lab
Area: 1440sf lab, 400 sf prep
Quantity: 1
Occupants: +/- 24 students+ teacher

LOCATION/ORIENTATION CRITERIA

Users: teachers and students
Adjacencies: paired labs with shared prep between, central to CRs on each academic floor
Orientation: north/south exposure for daylight control
Views: Courtyard/Ocean

TECHNICAL CRITERIA

Floor/Base: linoleum tile floor/ rubber base
Walls: multi-layer gypsum board, painted
Ceiling: high light reflectance ceiling tile (.90 LRV)
Door/Frame: solid wood door and 3' wide sidelight glass with solid roller shade
Windows: thermally broken aluminum frames, w/ operable awnings; triple glazed, hurricane glass. Insect screens and mesh roll down mesh shade (10% open.) Built-in gwb light shelf at south facing windows
Lighting: LED pendant direct/indirect with daylight dimming and occupancy sensors
Power: convenience outlets located above counters, cabinet face & overhead (reels)

Data/Com: telephone at desk, intercom, wireless access point, data outlets, presentation outlet, data projector, sound reinforcement & wireless clock
Security: Similar to Typical Classrooms.
Acoustical: Refer to Acoustical Report
Mechanical: Refer to Mechanical Narrative
Plumb/Fire: Refer to plumbing/fire protection narrative

FIXTURES / FURNISHINGS

Casework: Perimeter epoxy lab counters with upper/lower cabinets, lab sinks, 1 ADA sink, tall storage units, safety goggle sterilizer, mobile student tables with epoxy surface
Furnishings: Student stools, teacher desk with file pedestal, teacher task chair, mobile presentation lectern
Equipment: Double sided pass-through fume hood, full size refrigerator, dish washer, acid/flammable cabinets, teacher computer
Storage: In-room Cabinets as noted above

OTHER INFORMATION:

Visibility: Sidelights at doorway entrances are compatible with the District's standards related to visibility from the corridor.





SPECIAL EDUCATION - COAST COLLABORATIVE

FUNCTIONAL CRITERIA

Description: specialized instruction space for students with individual educational plans to get small group instruction and support toward academic independence

Area: 900sf

Quantity: 1

Occupants: TBD

LOCATION/ORIENTATION CRITERIA

Users: special education students/teachers/specialists

Adjacencies: Dedicated Entrance- Heart of the School

Orientation: north/south exposure for daylight control

Views: outside

TECHNICAL CRITERIA

Floor/Base: linoleum tile floor/rubber base

Walls: multi-layer gypsum board, painted

Ceiling: high light reflectance ceiling tile (.90 LRV)

Door/Frame: solid wood doors with acoustic gaskets & 3' w. glass sidelight with solid roller shade

Windows: thermally broken aluminum frames, w/ operable awnings; triple glazed, hurricane glass. Insect screens and mesh roll down mesh shade (10% open.) Built-in gwb light shelf at south facing windows

Lighting: LED pendant direct/indirect with daylight dimming and occupancy sensors

Power: convenience outlets w/ USB

Data/Com: telephone, intercom, wireless access point, data

Security:

outlets, presentation outlet, data projector, sound reinforcement & wireless clock

CR entry doors are set-up to be locked when closed (single function/dead-bolt) and have an easy release automatic closer. The doors have keyed access from the corridor side and egress is always permitted classroom side. Glass sidelights are provided with out-of-sight zones within the room. In room communications and public address systems are provided

Acoustical:

Refer to Acoustical Report

Mechanical:

Refer to Mechanical Narrative

Plumb/Fire:

Refer to plumbing/fire protection narrative

FIXTURES / FURNISHINGS

Casework: Tall storage cabinets

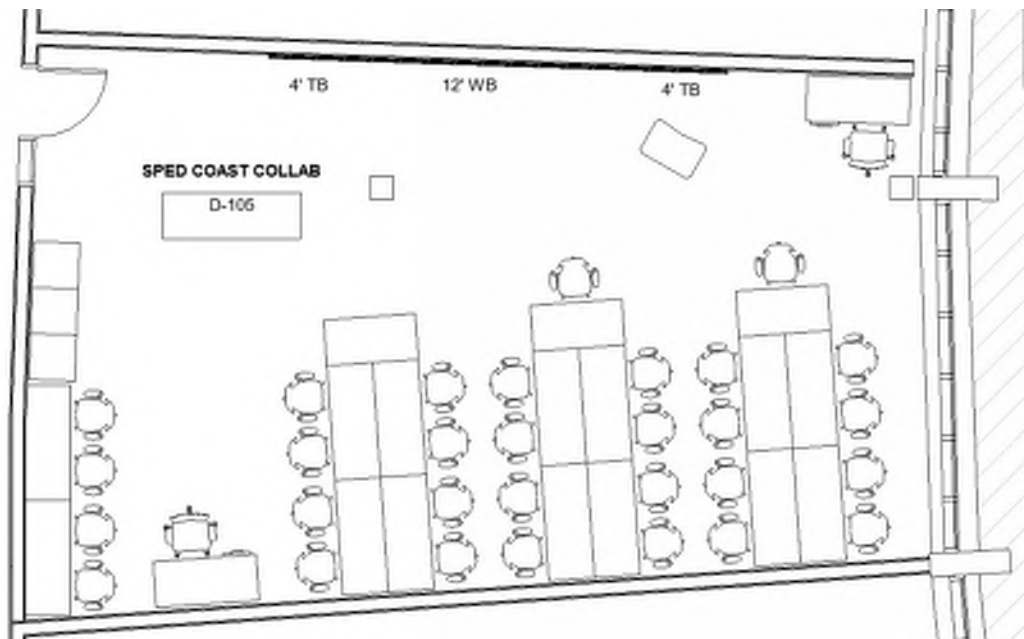
Furnishings: (2) Teacher desk with file pedestal, (2) teacher task chair, mobile presentation lectern, bookcase, lateral file, computer tables, student chairs, white boards, tack boards

Equipment: Teacher computer, (30) student computer

Storage: In-room Cabinets as noted above

OTHER INFORMATION

Visibility: Sidelights at doorway entrances are compatible with the District's standards related to visibility from the corridor.





SPECIAL EDUCATION - OT/PT

FUNCTIONAL CRITERIA

Description: Occupational and Physical Therapy Room
Area: 450SF
Quantity: 1
Occupants: --

LOCATION/ORIENTATION CRITERIA

Users: Therapists/Students
Adjacencies: -
Orientation: -
Views: -

TECHNICAL CRITERIA

Floor/Base: linoleum tile floor/rubber base
Walls: multi-layer gypsum board, painted
Ceiling: high light reflectance ceiling tile (.90 LRV)
Doors: solid wood doors,
Windows: thermally broken aluminum frames, w/
operable awnings; triple glazed, hurricane
glass. Insect screens and mesh roll
down mesh shade (10% open.) Built-in
gwb light shelf at south facing windows
Lighting: LED Pendants
Power: convenience outlets
Data/Com: telephone, intercom, wireless access point, local
sound system & wireless clock

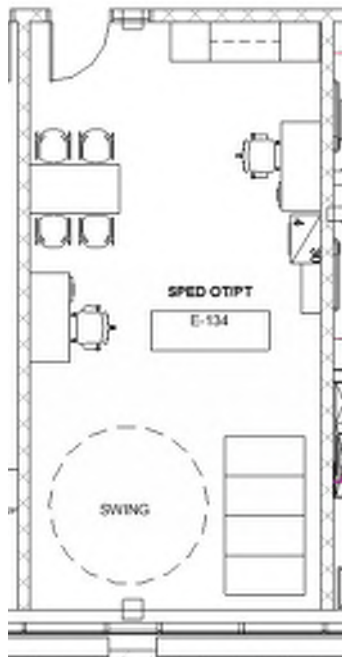
Security: cameras throughout building
Acoustical: Refer to Acoustical Report
Mechanical: Refer to Mechanical Narrative
Plumb/Fire: Refer to plumbing/fire protection narrative

FIXTURES / FURNISHINGS

Casework: Upper/lower cabinets, Tall storage
cabinets
Furnishings: Teacher desk with file pedestal,
teacher task chair, mobile
presentation lectern, bookcase,
lateral file, student desks/tables,
student chairs, white boards, tack
boards
Equipment: Teacher computer, swing, ball rack,
gym mats
Storage: In-room Cabinets as noted above

OTHER INFORMATION:

Visibility: N/A





SPECIAL EDUCATION - SENSORY/QUIET

FUNCTIONAL CRITERIA

Description: Quiet Room
Area: 100SF
Quantity: 1
Occupants: --

FIXTURES / FURNISHINGS

Casework: N/A
Furnishings: Bean bag chair or soft rocker
Equipment: N/A
Storage: N/A

LOCATION/ORIENTATION CRITERIA

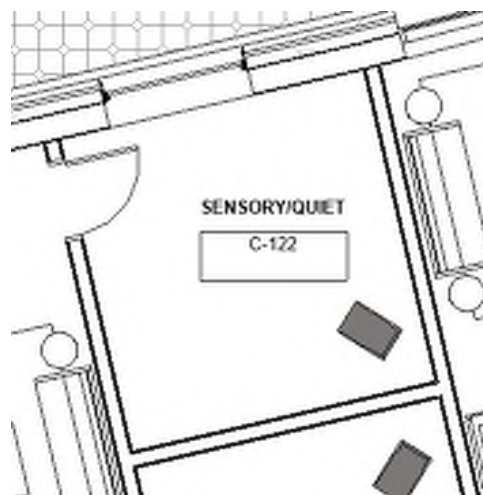
Users: Therapists/Students
Adjacencies: LS/Concepts
Orientation: -
Views: -

OTHER INFORMATION:

Visibility: N/A

TECHNICAL CRITERIA

Floor/Base: linoleum tile floor/rubber base
Walls: multi-layer gypsum board, painted
Ceiling: high light reflectance ceiling tile (.90 LRV)
Doors: solid wood doors,
Windows: n/a
Lighting: LED Pendants
Power: convenience outlets
Data/Com: telephone, intercom, wireless access point, local sound system & wireless clock
Security: cameras throughout building
Acoustical: Refer to Acoustical Report
Mechanical: Refer to Mechanical Narrative
Plumb/Fire: Refer to plumbing/fire protection narrative





SPECIAL EDUCATION- SPEECH/PSYCH SUITE

FUNCTIONAL CRITERIA

Description: Speech/Psych Suite
 Area: 1450sf Suite includes: (2) 150sf offices, (2) 150sf ETLs, (1) 150sf Psych office, (2) 50sf Testing Rooms and (2) 300sf IEP Conference Rooms
 Quantity: 1 Suite
 Occupants: -

Data/Com: telephone, intercom, wireless access point, data outlets & wireless clock
 Security: Similar to Classrooms along with forced entry protection on the corridor side.
 Acoustical: Refer to Acoustical Report
 Mechanical: Refer to Mechanical Narrative
 Plumb/Fire: Refer to plumbing/fire protection narrative

LOCATION/ORIENTATION CRITERIA

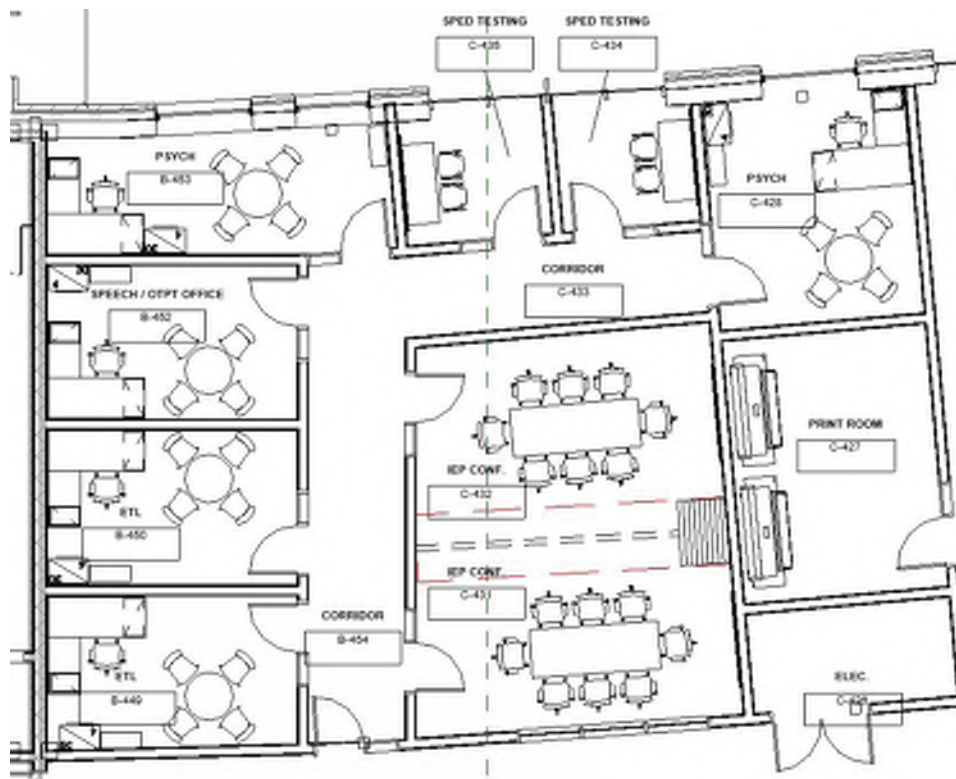
Users: teachers, students
 Adjacencies: Centrally located
 Orientation: -
 Views: yes

FIXTURES / FURNISHINGS

Casework: N/A
 Furnishings: Office desks, task chairs, filing, bookcases, meeting tables, guest chairs, testing carrels, white boards, tack boards
 Equipment: Staff computers, desktop printers
 Storage: N/A

TECHNICAL CRITERIA

Floor/Base: linoleum tile floor/rubber base
 Walls: multi-layer gypsum wall board, painted
 Ceiling: high light reflectance ceiling tile (.90 LRV);
 Door/Frame: solid wood door and 3' wide sidelight glass with solid roller shade
 Windows: thermally broken aluminum frames, w/ operable awnings; triple glazed, hurricane glass. Insect screens and mesh roll down mesh shade (10% open.) Built-in gwb light shelf at south facing windows
 Lighting: LED pendant direct/indirect with daylight dimming and occupancy sensors
 Power: convenience outlets w/ USB





ART STUDIO

FUNCTIONAL CRITERIA

Description: Art Classroom+ Art Storage/Kiln
 Area: 1200sf + 150sf storage
 Quantity: 4 each
 Occupants: +/- 28

LOCATION/ORIENTATION CRITERIA

Users: Students & Teachers/Staff
 Adjacencies: Art Classrooms+ Heart of the School
 Orientation: East
 Views: Front Entry Plaza

TECHNICAL CRITERIA

Floor/Base: polished concrete
 Walls: multi-layer gypsum board, painted
 Ceiling: exposed painted exposed ceilings with 50% ACT Clouds + overhead Unistrut/pipe grid OR CLT exposed
 Door/Frame: solid wood doors and 3' wide sidelight glass with solid roller shade, (2) overhead doors
 Windows: thermally broken aluminum frames, w/ operable awnings; triple glazed, hurricane glass. Insect screens and mesh roll down mesh shade (10% open.) Built-in gwb light shelf at south facing windows
 Lighting: LED pendant direct/indirect with daylight dimming and occupancy sensors

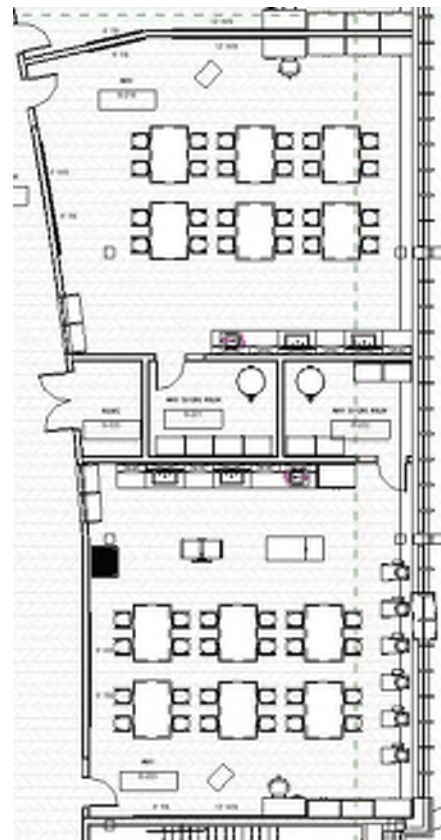
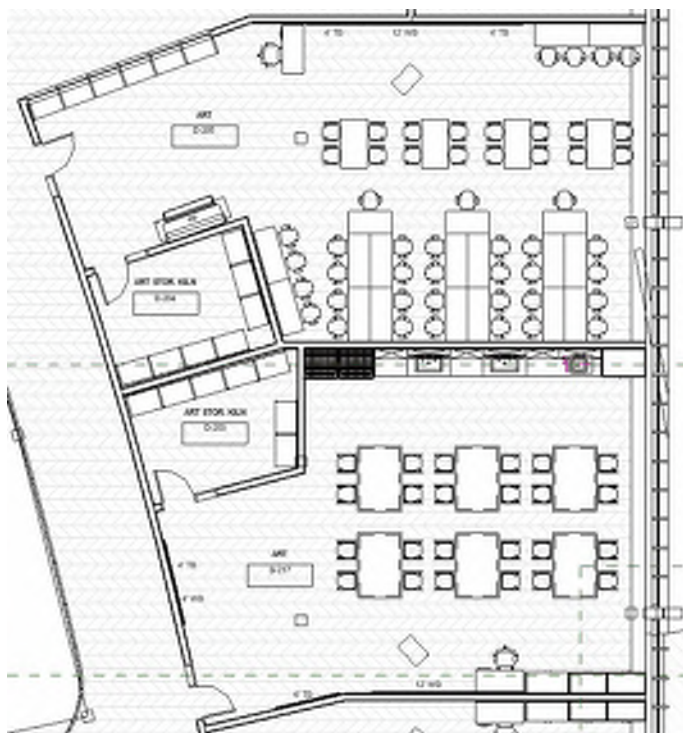
Power: convenience outlets w/ USB. overhead cord reels.
 Data/Com: telephone, intercom, wireless access point, data outlets, presentation outlet, data projector, sound reinforcement & wireless clock
 Security: Similar to Typical Classrooms.
 Acoustical: Refer to Acoustical Report
 Mechanical: Refer to Mechanical Narrative
 Plumb/Fire: Refer to plumbing/fire protection narrative

FIXTURES / FURNISHINGS

Casework: Sink counter with upper and lower cabinets, Tall storage cabinets
 Furnishings: Teachers desk, teacher task chair, mobile presentation lectern, filing, bookcase, demo table, student work tables, student stools, computer tables, student task chairs, white boards, tack boards
 Equipment: Teacher computer, student computers, printers, pottery wheels, ware cart, wedging table, slab roler, drying racks
 Storage: In-room Cabinets as noted above

OTHER INFORMATION:

Visibility: -





BAND ROOM + PRACTICE

FUNCTIONAL CRITERIA

Description: Space for band and general music instruction

Area: 1500sf + (4) 75sf Practice

Quantity: 1

Occupants: +/- 28

LOCATION/ORIENTATION CRITERIA

Users: students, teachers and community groups,

Adjacencies: auditorium and other performing arts

Orientation: East

Views: Yes

TECHNICAL CRITERIA

Floor/Base: Carpet; Rubber Base

Walls: multi-layer gypsum wall board, painted + 25% wall area fabric wrapped acoustical panels

Ceiling: Roxul acoustic panels, suspended sound reflecting/diffusion panels

Door/Frame: solid wood doors with acoustic gaskets and 3' wide sidelight glass with solid roller shade

Windows: thermally broken aluminum frames, w/ operable awnings; triple glazed, hurricane glass. Insect screens and mesh roll down mesh shade (10% open.)

Lighting: LED pendant direct/indirect with daylight dimming and occupancy sensors

Power: convenience outlets w/ USB, power to motorized shades

Data/Com: Data projector, document camera, teacher computer, WAP, VOIP

Security: Similar to Typical Classrooms.

Acoustical: Refer to Acoustical Report

Mechanical: Refer to Mechanical Narrative

Plumb/Fire: Refer to plumbing/fire protection narrative

FIXTURES / FURNISHINGS

Casework: Instrument storage units, tall storage cabinets

Furnishings: Teachers desk, teacher task chair, mobile presentation lectern, filing, bookcase, conductor's podium, student music chairs, music stands, white boards, tack boards

Equipment: Teacher computer, music instruments

Storage: In-room Cabinets as noted above

OTHER INFORMATION

Visibility: Sidelights at doorway entrances are compatible with the District's standards related to visibility from the corridor.





CHORUS ROOM + PRACTICE

FUNCTIONAL CRITERIA

Description: Space for Chorus and general music instruction

Area: 1500sf+ (4) 75sf Practice

Quantity: 1

Occupants: +/- 28

LOCATION/ORIENTATION CRITERIA

Users: students, teachers and community groups,

Adjacencies: auditorium and other performing arts

Orientation: East

Views: Yes

TECHNICAL CRITERIA

Floor/Base: Carpet; Rubber Base

Walls: multi-layer gypsum wall board, painted + 25% wall area fabric wrapped acoustical panels

Ceiling: Roxul acoustic panels, suspended sound reflecting/diffusion panels

Door/Frame: solid wood doors with acoustic gaskets and 3' wide sidelight glass with solid roller shade

Windows: thermally broken aluminum frames, w/ operable awnings; triple glazed, hurricane glass. Insect screens and mesh roll down mesh shade (10% open.)

Lighting: LED pendant direct/indirect with daylight dimming and occupancy sensors

Power: convenience outlets w/ USB, power to motorized shades

Data/Com: Data projector, document camera, teacher computer, WAP, VOIP

Security: Similar to Typical Classrooms.

Acoustical: Refer to Acoustical Report

Mechanical: Refer to Mechanical Narrative

Plumb/Fire: Refer to plumbing/fire protection narrative

FIXTURES / FURNISHINGS

Casework: Tall storage cabinets

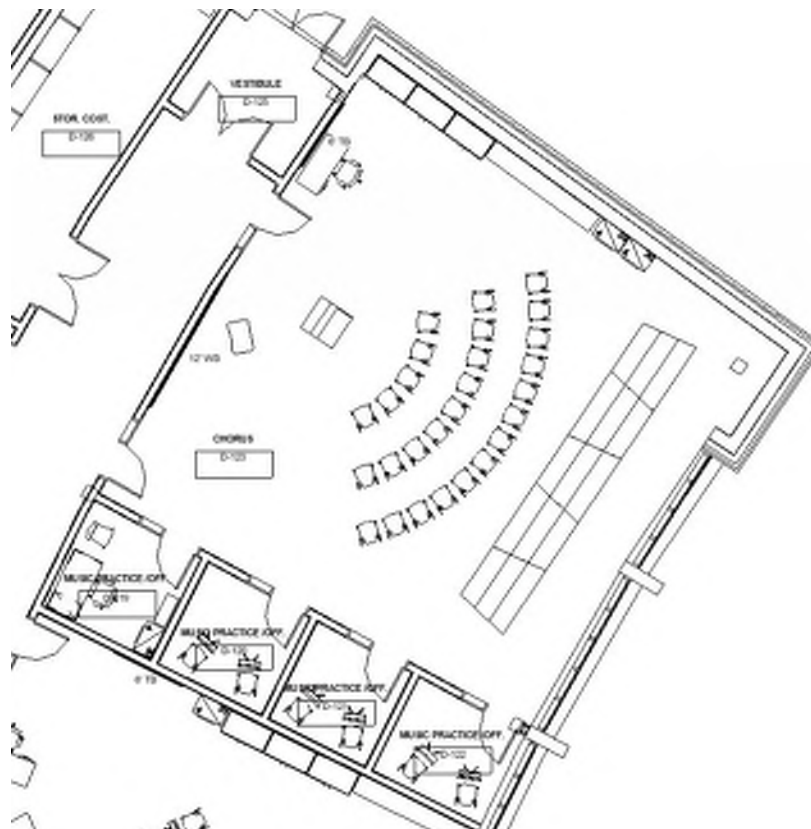
Furnishings: Teachers desk, teacher task chair, mobile presentation lectern, filing, bookcase, conductor's podium, student music chairs, music stands, white boards, tack boards

Equipment: Teacher computer, music instruments, choral risers, piano

Storage: In-room Cabinets as noted above

OTHER INFORMATION

Visibility: Sidelights at doorway entrances are compatible with the District's standards related to visibility from the corridor.





ENSEMBLE ROOM + PRACTICE

FUNCTIONAL CRITERIA

Description: Space for general music instruction

Area: 200sf+ (4) 75sf Practice

Quantity: 1

Occupants: -

LOCATION/ORIENTATION CRITERIA

Users: students, teachers and community groups,

Adjacencies: auditorium and other performing arts

Orientation: East

Views: Yes

Lighting: LED pendant direct/indirect with daylight dimming and occupancy sensors

Power: convenience outlets w/ USB, power to motorized shades

Data/Com: Data projector, document camera, teacher computer, WAP, VOIP

Security: Similar to Typical Classrooms.

Acoustical: Refer to Acoustical Report

Mechanical: Refer to Mechanical Narrative

Plumb/Fire: Refer to plumbing/fire protection narrative

TECHNICAL CRITERIA

Floor/Base: Carpet; Rubber Base

Walls: multi-layer gypsum wall board, painted + 25% wall area fabric wrapped acoustical panels

Ceiling: Roxul acoustic panels, suspended sound reflecting/diffusion panels

Door/Frame: solid wood doors with acoustic gaskets and 3' wide sidelight glass with solid roller shade

Windows: thermally broken aluminum frames, w/ operable awnings; triple glazed, hurricane glass. Insect screens and mesh roll down mesh shade (10% open.)

FIXTURES / FURNISHINGS

Casework: N/A

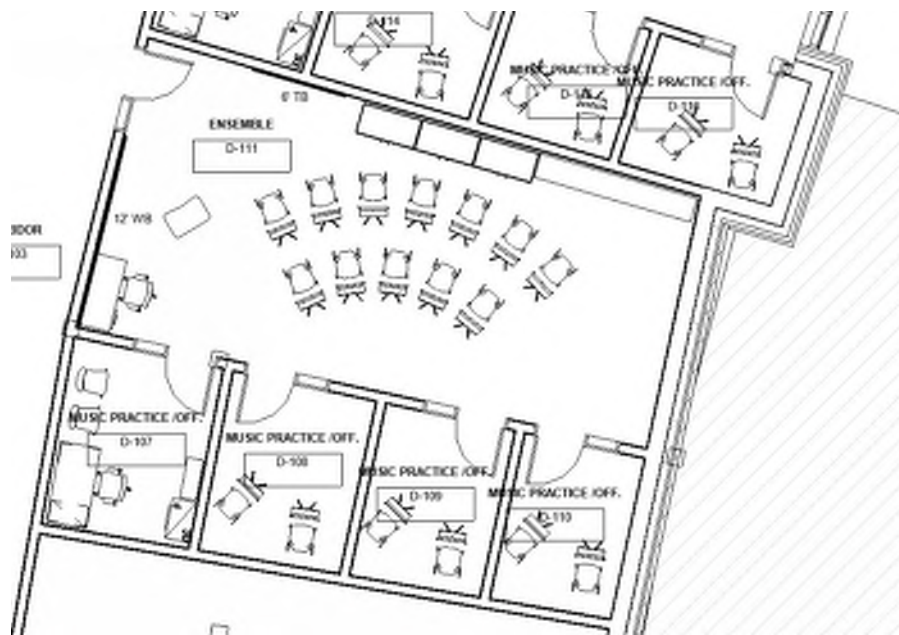
Furnishings: student music chairs, music stands, white boards, tack boards

Equipment: N/A

Storage: N/A

OTHER INFORMATION

Visibility: Sidelights at doorway entrances are compatible with the District's standards related to visibility from the corridor.





THEATER

FUNCTIONAL CRITERIA

Description: Space for Theater + Performing Arts Instrution

Area: 1200sf

Quantity: 1

Occupants: +/- 24

LOCATION/ORIENTATION CRITERIA

Users: students, teachers and community groups,

Adjacencies: auditorium and other performing arts

Orientation: West

Views: Yes

TECHNICAL CRITERIA

Floor/Base: Linoleum; Rubber Base

Walls: multi-layer gypsum wall board, painted + 25% wall area fabric wrapped acoustical panels

Ceiling: Roxul acoustic panels, suspended sound reflecting/diffusion panels

Door/Frame: solid wood doors with acoustic gaskets and 3' wide sidelight glass with solid roller shade

Windows: thermally broken aluminum frames, w/ operable awnings; triple glazed, hurricane glass. Insect screens and mesh roll down mesh shade (10% open.)

Lighting: LED pendant direct/indirect with daylight dimming and occupancy sensors

Power: convenience outlets w/ USB, power to motorized shades

Data/Com: Data projector, document camera, teacher computer, WAP, VOIP

Security: Similar to Typical Classrooms.

Acoustical: Refer tp Acoustical Report

Mechanical: Refer to Mechanical Narrative

Plumb/Fire: Refer to plumbing/fire protection narrative

FIXTURES / FURNISHINGS

Casework: Tall storage cabinets

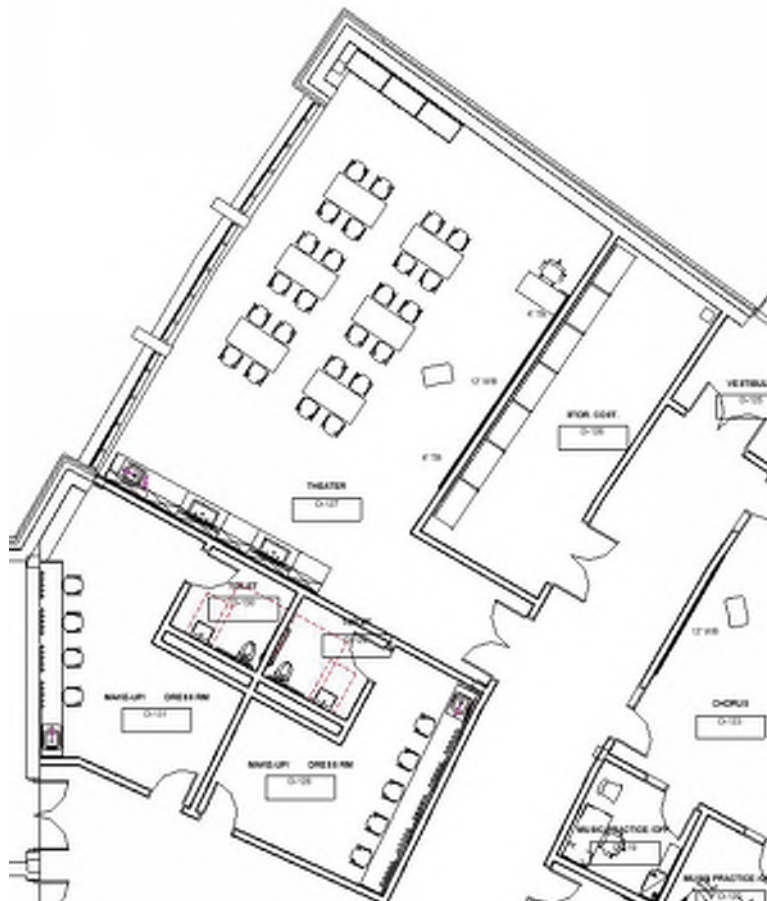
Furnishings: Teacher desk, teacher task chair, filing, bookcase, student work tables, student stools

Equipment: Costume storage racks

Storage: In-room Cabinets as noted above

OTHER INFORMATION

Visibility: Sidelights at doorway entrances are compatible with the District's standards related to visibility from the corridor.





BUSINESS/ACCOUNTING/LAW CLASSROOM

FUNCTIONAL CRITERIA

Description: primary teaching and learning space
Area: 900sf Classrooms
Quantity: 2
Occupants: +/- 24 students+ teacher

access point, data outlets, presentation outlet, data projector, sound reinforcement & wireless clock
Security: Similar to General Classrooms
Acoustical: Refer to Acoustical Report
Mechanical: Refer to Mechanical Narrative
Plumb/Fire: Refer to plumbing/fire protection narrative

LOCATION/ORIENTATION CRITERIA

Users: teachers and students
Adjacencies: Other Bus/Acct/Law Classroom
Orientation: North
Views: Yes

FIXTURES / FURNISHINGS

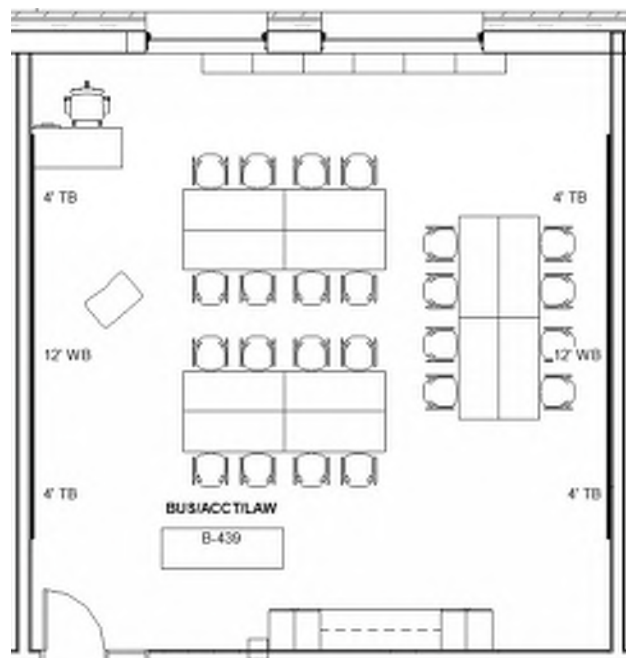
Casework: Tall storage cabinets
Furnishings: Teacher desk, teacher task chair, student work tables, student chairs, student computer tables, white boards, tack boards
Equipment: Teacher computer, student computers
Storage: In-room storage as noted above

TECHNICAL CRITERIA

Floor/Base: linoleum tile floor/ rubber base
Walls: multi-layer gypsum wall board, fry-reglet at 8'-0", painted
Ceiling: high light reflectance ceiling tile (.90 LRV); slopes from 8'-8" up to 10'-8" at windows
Door/Frame: solid wood door and 3' wide sidelight glass with solid roller shade
Windows: thermally broken aluminum frames, w/ operable awnings; triple glazed, hurricane glass. Insect screens and mesh roll down mesh shade (10% open.) Built-in gwb light shelf at south facing windows
Lighting: LED pendant direct/indirect with daylight dimming and occupancy sensors
Power: convenience outlets w/ USB; overhead cord reels
Data/Com: telephone at desk, intercom, wireless

OTHER INFORMATION:

Visibility: Sidelights at doorway entrances are compatible with the District's standards related to visibility from the corridor.





COMPUTER SCIENCE CLASSROOM

FUNCTIONAL CRITERIA

Description: digital literacy
 Area: 1,000sf Classrooms
 Quantity: 3
 Occupants: +/- 24 students+ teacher

LOCATION/ORIENTATION CRITERIA

Users: teachers and students
 Adjacencies: Other Computer Science Classrooms
 Orientation: -
 Views: -

TECHNICAL CRITERIA

Floor/Base: linoleum tile floor/ rubber base
 Walls: multi-layer gypsum wall board, fry-reglet at 8'-0", painted
 Ceiling: exposed painted exposed ceilings with 50% ACT Clouds + overhead Unistrut/pipe grid OR CLT exposed
 Door/Frame: solid wood door and 3' wide sidelight glass with solid roller shade
 Windows: Interior Storefront to Heart of School
 Lighting: LED pendant direct/indirect with daylight dimming and occupancy sensors
 Power: convenience outlets w/ USB; overhead cord reels

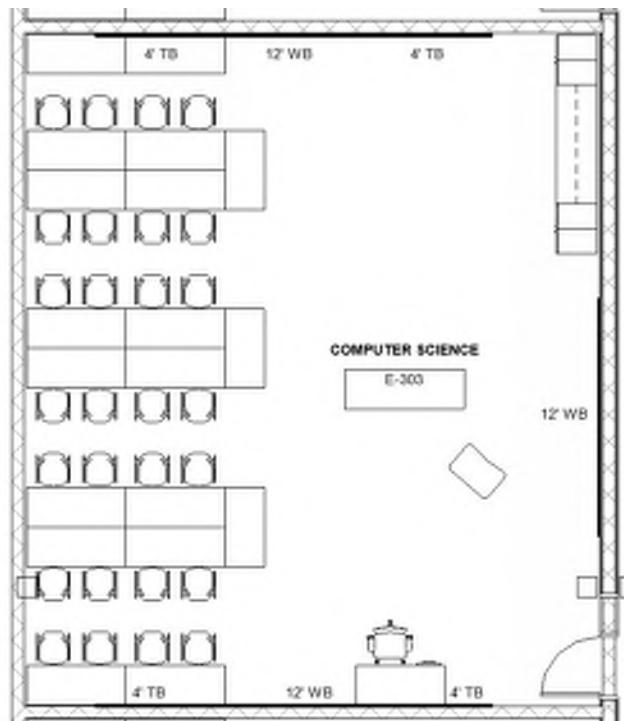
Data/Com: telephone at desk, intercom, wireless access point, data outlets, presentation outlet, data projector, sound reinforcement & wireless clock
 Security: Similar to General Classrooms
 Acoustical: Refer to Acoustical Report
 Mechanical: Refer to Mechanical Narrative
 Plumb/Fire: Refer to plumbing/fire protection narrative

FIXTURES / FURNISHINGS

Casework: Tall storage cabinets
 Furnishings: Teacher desk, teacher task chair, student work tables, student chairs, student computer tables, white boards, tack boards
 Equipment: Teacher computer, student computers
 Storage: In-room storage as noted above

OTHER INFORMATION:

Visibility: Sidelights at doorway entrances are compatible with the District's standards related to visibility from the corridor.





DIGITAL STUDIO

FUNCTIONAL CRITERIA

Description: digital literacy
 Area: 1,000sf Classrooms
 Quantity: 2
 Occupants: +/- 24 students+ teacher

LOCATION/ORIENTATION CRITERIA

Users: teachers and students
 Adjacencies: -
 Orientation: -
 Views: -

TECHNICAL CRITERIA

Floor/Base: linoleum tile floor/ rubber base
 Walls: multi-layer gypsum wall board, fry-reglet at 8'-0", painted
 Ceiling: high light reflectance ceiling tile (.90 LRV); slopes from 8'-8" up to 10'-8" at windows
 Door/Frame: solid wood door and 3' wide sidelight glass with solid roller shade
 Windows: thermally broken aluminum frames, w/ operable awnings; triple glazed, hurricane glass. Insect screens and mesh roll down mesh shade (10% open.) Built-in gwb light shelf at south facing windows
 Lighting: LED pendant direct/indirect with daylight dimming and occupancy sensors
 Power: convenience outlets w/ USB; overhead cord reels
 Data/Com: telephone at desk, intercom, wireless

access point, data outlets, presentation outlet, data projector, sound reinforcement & wireless clock

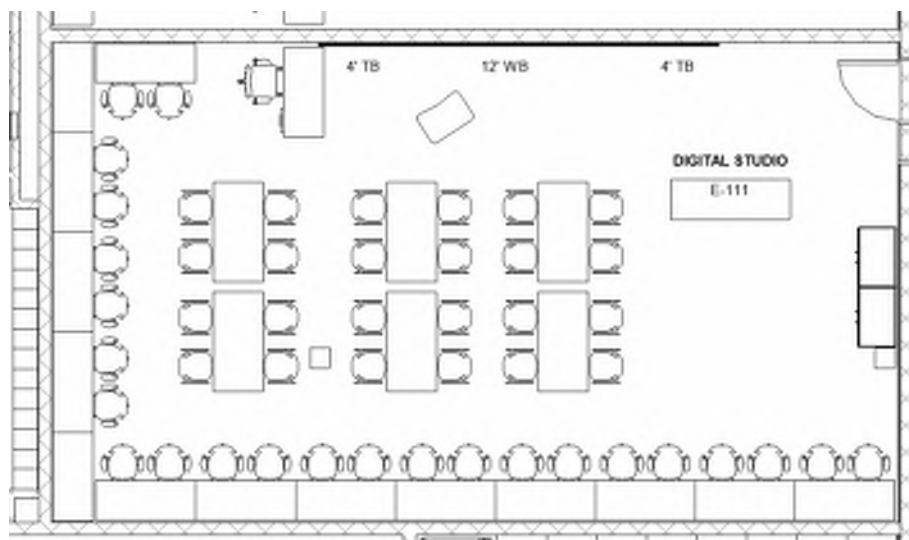
Security: Similar to General Classrooms
 Acoustical: Refer to Acoustical Report
 Mechanical: Refer to Mechanical Narrative
 Plumb/Fire: Refer to plumbing/fire protection narrative

FIXTURES / FURNISHINGS

Casework: Tall storage cabinets
 Furnishings: Teacher desk, teacher task chair, student work tables, student chairs, student computer tables, white boards, tack boards
 Equipment: Teacher computer, student computers
 Storage: In-room storage as noted above

OTHER INFORMATION:

Visibility: Sidelights at doorway entrances are compatible with the District's standards related to visibility from the corridor.





MARKETING+ SCHOOL STORE

FUNCTIONAL CRITERIA

Description: instruction
 Area: 1,000sf Classroom, 400sf School Store
 Quantity: 1 each
 Occupants: +/- 24 students+ teacher

LOCATION/ORIENTATION CRITERIA

Users: teachers and students
 Adjacencies: Heart of the School
 Orientation: East
 Views: Front Entry Plaza

TECHNICAL CRITERIA

Floor/Base: linoleum tile floor/ rubber base
 Walls: multi-layer gypsum wall board, fry-reglet at 8'-0", painted
 Ceiling: exposed painted exposed ceilings with 50% ACT Clouds + overhead Unistrut/pipe grid OR CLT exposed
 Door/Frame: solid wood door and 3' wide sidelight glass with solid roller shade
 Windows: thermally broken aluminum frames, w/ operable awnings; triple glazed, hurricane glass. Insect screens and mesh roll down mesh shade (10% open.) Built-in gwb light shelf at south facing windows
 Lighting: LED pendant direct/indirect with daylight dimming and occupancy sensors
 Power: convenience outlets w/ USB; overhead cord reels

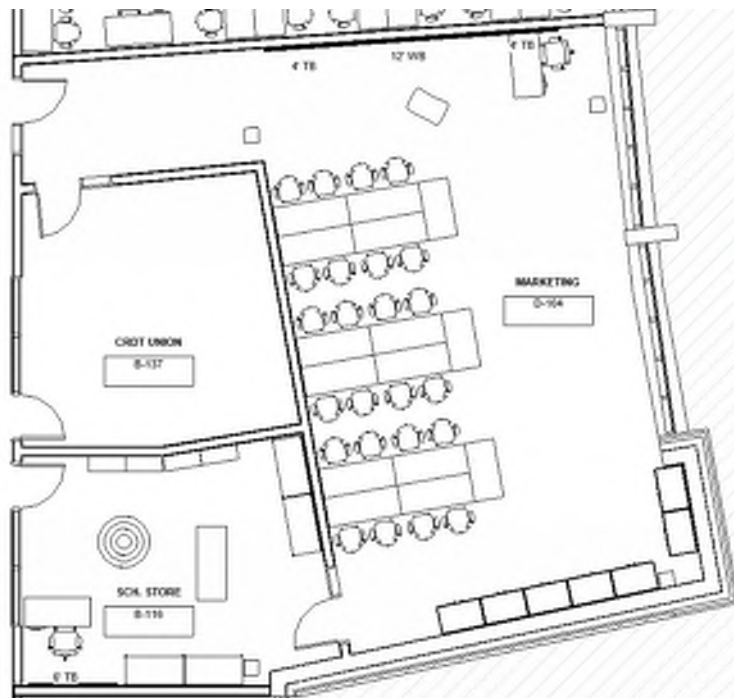
Data/Com: telephone at desk, intercom, wireless access point, data outlets, presentation outlet, data projector, sound reinforcement & wireless clock
 Security: Similar to General Classrooms
 Acoustical: Refer to Acoustical Report
 Mechanical: Refer to Mechanical Narrative
 Plumb/Fire: Refer to plumbing/fire protection narrative

FIXTURES / FURNISHINGS

Casework: Sink counter with upper/lower cabinets, Tall storage cabinets
 Furnishings: Teacher desk, teacher task chair, student work tables, student chairs, student computer tables, white boards, tack boards, industrial metal shelving
 Equipment: Teacher computer, student computers
 Storage: In-room storage as noted above

OTHER INFORMATION:

Visibility: Sidelights at doorway entrances are compatible with the District's standards related to visibility from the corridor.





ARCHITECTURE/ENGINEERING

FUNCTIONAL CRITERIA

Description: digital literacy
Area: 1,000sf Classrooms
Quantity: 1
Occupants: +/- 24 students+ teacher

LOCATION/ORIENTATION CRITERIA

Users: teachers and students
Adjacencies: -
Orientation: -
Views: -

TECHNICAL CRITERIA

Floor/Base: linoleum tile floor/ rubber base
Walls: multi-layer gypsum wall board, fry-reglet at 8'-0", painted
Ceiling: high light reflectance ceiling tile (.90 LRV); slopes from 8'-8" up to 10'-8" at windows
Door/Frame: solid wood door and 3' wide sidelight glass with solid roller shade
Windows: thermally broken aluminum frames, w/ operable awnings; triple glazed, hurricane glass. Insect screens and mesh roll down mesh shade (10% open.) Built-in gwb light shelf at south facing windows
Lighting: LED pendant direct/indirect with daylight dimming and occupancy sensors
Power: convenience outlets w/ USB; overhead cord reels
Data/Com: telephone at desk, intercom, wireless

access point, data outlets, presentation outlet, data projector, sound reinforcement & wireless clock

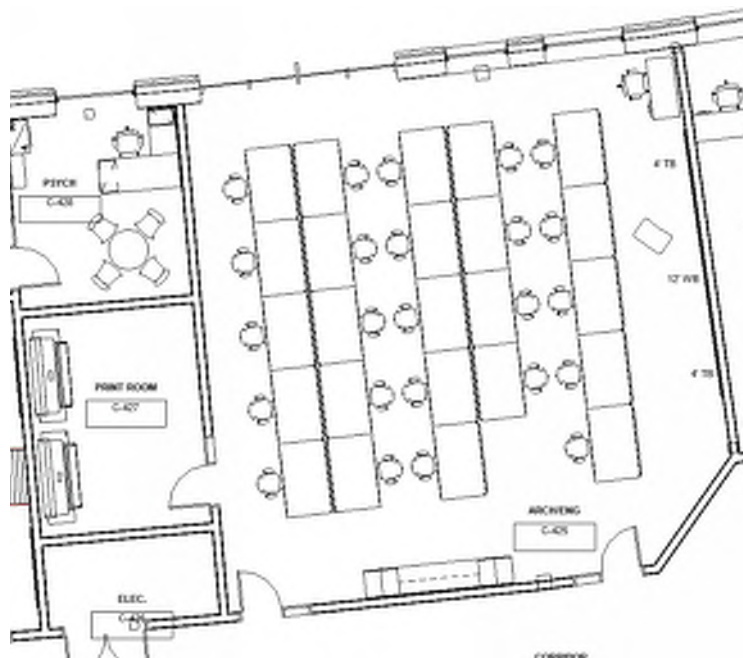
Security: Similar to General Classrooms
Acoustical: Refer to Acoustical Report
Mechanical: Refer to Mechanical Narrative
Plumb/Fire: Refer to plumbing/fire protection narrative

FIXTURES / FURNISHINGS

Casework: Tall storage cabinets
Furnishings: Teacher desk, teacher task chair, drafting tables, student chairs, white boards, tack boards
Equipment: Teacher computer, student computers
Storage: In-room storage as noted above

OTHER INFORMATION:

Visibility: Sidelights at doorway entrances are compatible with the District's standards related to visibility from the corridor.





VIDEO PRODUCTION/STUDIO SUITE

FUNCTIONAL CRITERIA

Description: video instruction
 Area: 2,000sf
 Quantity: 1
 Occupants: +/- 24 students+ teacher

LOCATION/ORIENTATION CRITERIA

Users: teachers and students
 Adjacencies: Heart of the School
 Orientation: -
 Views: -

TECHNICAL CRITERIA

Floor/Base: linoleum tile floor/ rubber base
 Walls: multi-layer gypsum wall board, fry-reglet at 8'-0", painted
 Ceiling: exposed painted exposed ceilings with 50% ACT Clouds + overhead Unistrut/pipe grid OR CLT exposed
 Door/Frame: solid wood door and 3' wide sidelight glass with solid roller shade
 Windows: thermally broken aluminum frames, w/ operable awnings; triple glazed, hurricane glass. Insect screens and mesh roll down mesh shade (10% open.) Built-in gwb light shelf at south facing windows
 Lighting: LED pendant direct/indirect with daylight dimming and occupancy sensors
 Power: convenience outlets w/ USB; overhead cord reels

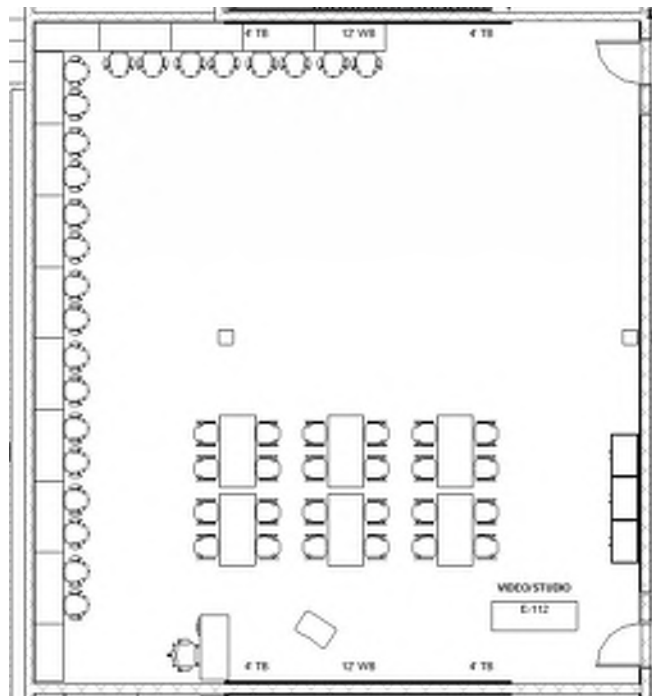
Data/Com: telephone at desk, intercom, wireless access point, data outlets, presentation outlet, data projector, sound reinforcement & wireless clock
 Security: Similar to General Classrooms
 Acoustical: Refer to Acoustical Report
 Mechanical: Refer to Mechanical Narrative
 Plumb/Fire: Refer to plumbing/fire protection narrative

FIXTURES / FURNISHINGS

Casework: Tall storage cabinets
 Furnishings: Teacher desk, teacher task chair, student work tables, student chairs, student computer tables, white boards, tack boards
 Equipment: Teacher computer, student computers, recording equipment
 Storage: In-room storage as noted above

OTHER INFORMATION:

Visibility: Sidelights at doorway entrances are compatible with the District's standards related to visibility from the corridor.





HOSPITALITY (KITCHEN)

FUNCTIONAL CRITERIA

Description: teaching kitchen
Area: 2000sf
Quantity: 1
Occupants: +/- 24

LOCATION/ORIENTATION CRITERIA

Users: Students & Teachers/Staff
Adjacencies: Restaurant + Heart of the School
Orientation: West
Views: Courtyard

TECHNICAL CRITERIA

Floor/Base: Epoxy at Kitchen w/ integral base
Walls: multi-layer gypsum board, painted with Porcelain tile wainscot
Ceiling: exposed painted exposed ceilings with 50% ACT Clouds + overhead Unistrut/pipe grid OR CLT exposed
Door/Frame: solid wood doors and 3' wide sidelight glass with solid roller shade, (1) overhead glass door
Windows: thermally broken aluminum frames, w/ operable awnings; triple glazed, hurricane glass. Insect screens and mesh roll down mesh shade (10% open.)
Lighting: LED pendant direct/indirect with daylight dimming and occupancy sensors
Power: convenience outlets w/ USB. overhead cord reels.
Data/Com: telephone, intercom, wireless access point, data

outlets, presentation outlet, data projector, sound reinforcement & wireless clock

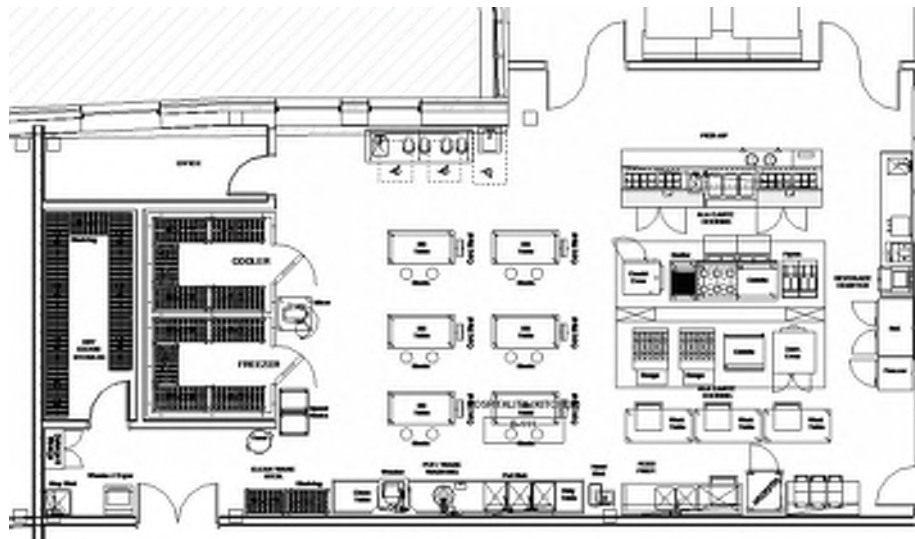
Security: Similar to Typical Classrooms.
Acoustical: Refer to Acoustical Report
Mechanical: Refer to Mechanical Narrative
Plumb/Fire: Refer to plumbing/fire protection narrative

FIXTURES / FURNISHINGS

Casework: -
Furnishings: -
Equipment: Waste receptacles, small wares
Storage: -

OTHER INFORMATION:

Visibility: -





HOSPITALITY (CLASSROOM/RESTAURANT)

FUNCTIONAL CRITERIA

Description: teaching restaurant
Area: 1000sf
Quantity: 1
Occupants: +/- 24

LOCATION/ORIENTATION CRITERIA

Users: Students & Teachers/Staff
Adjacencies: Kitchen + Heart of the School
Orientation: West
Views: Courtyard

TECHNICAL CRITERIA

Floor/Base: terrazzo tile + base
Walls: multi-layer gypsum board, painted with Porcelain tile wainscot
Ceiling: exposed painted exposed ceilings with 50% ACT Clouds OR CLT exposed
Door/Frame: solid wood doors and 3' wide sidelight glass with solid roller shade, (1) overhead glass door
Windows: thermally broken aluminum frames, w/ operable awnings; triple glazed, hurricane glass. Insect screens and mesh roll

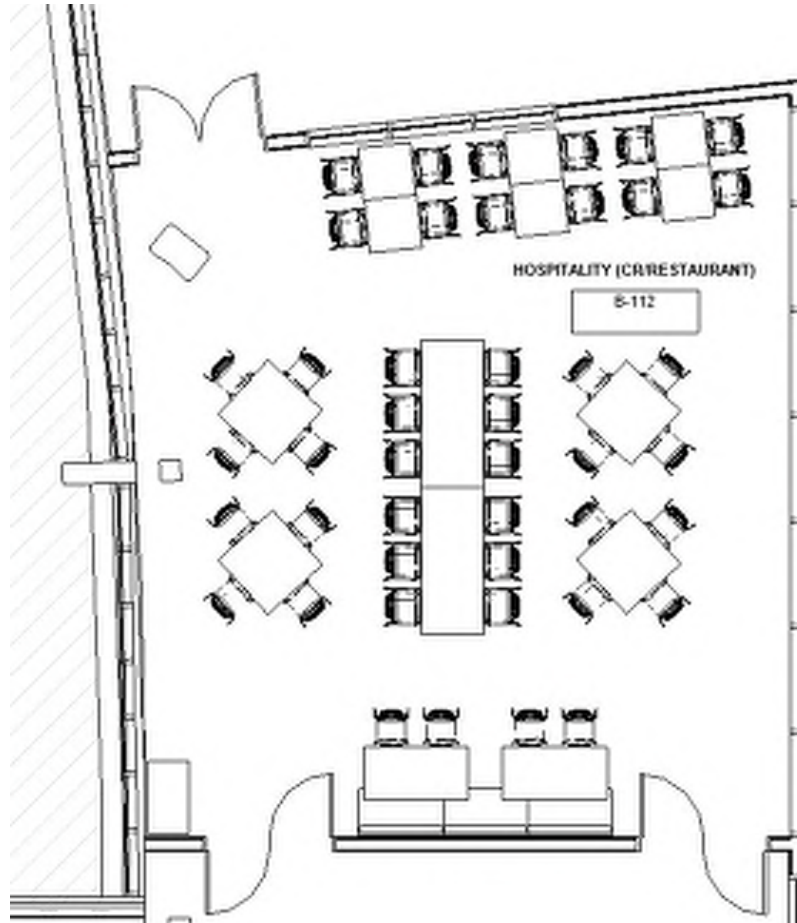
Lighting: down mesh shade (10% open.)
LED pendant direct/indirect with daylight dimming and occupancy sensors
Power: convenience outlets w/ USB. overhead cord reels.
Data/Com: telephone, intercom, wireless access point, data outlets, presentation outlet, data projector, sound reinforcement & wireless clock
Security: Similar to Typical Classrooms.
Acoustical: Refer to Acoustical Report
Mechanical: Refer to Mechanical Narrative
Plumb/Fire: Refer to plumbing/fire protection narrative

FIXTURES / FURNISHINGS

Casework: N/A
Furnishings: Hostess station, cafe tables, guest chairs, booth seating with tables
Equipment: Hostess computer/tablet
Storage: N/A

OTHER INFORMATION:

Visibility: From Heart of the School





MARINE SCIENCE/AQUACULTURE

FUNCTIONAL CRITERIA

Description:
 Area: 1,500sf
 Quantity: 1
 Occupants: +/- 24 students+ teacher

LOCATION/ORIENTATION CRITERIA

Users: teachers and students
 Adjacencies: -
 Orientation: -
 Views: -

TECHNICAL CRITERIA

Floor/Base: linoleum tile floor/ rubber base
 Walls: multi-layer gypsum wall board, fry-reglet at 8'-0", painted
 Ceiling: high light reflectance ceiling tile (.90 LRV); slopes from 8'-8" up to 10'-8" at windows
 Door/Frame: solid wood door and 3' wide sidelight glass with solid roller shade
 Windows: thermally broken aluminum frames, w/ operable awnings; triple glazed, hurricane glass. Insect screens and mesh roll down mesh shade (10% open.) Built-in gwb light shelf at south facing windows
 Lighting: LED pendant direct/indirect with daylight dimming and occupancy sensors
 Power: convenience outlets located above counters, cabinet face & overhead (reels)
 Data/Com: telephone at desk, intercom, wireless

access point, data outlets, presentation outlet, data projector, sound reinforcement & wireless clock

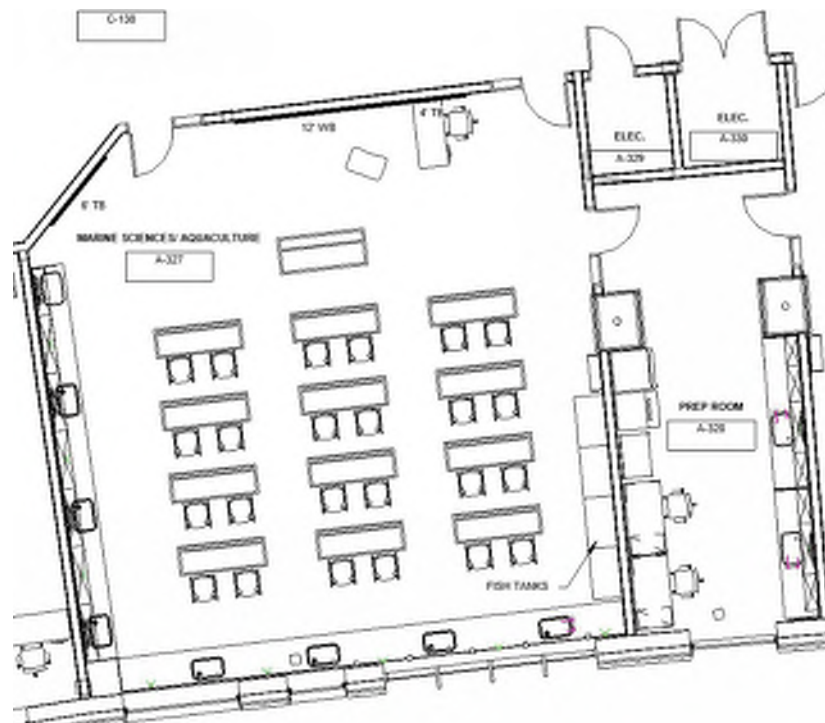
Security: Similar to General Classrooms
 Acoustical: Refer to Acoustical Report
 Mechanical: Refer to Mechanical Narrative
 Plumb/Fire: Refer to plumbing/fire protection narrative

FIXTURES / FURNISHINGS

Casework: Perimeter epoxy lab counters with upper/lower cabinets, lab sinks, 1 ADA sink, tall storage units, mobile student tables with epoxy surface
 Furnishings: Student stools, teacher desk with file pedestal, teacher task chair, mobile presentation lectern
 Equipment: Teacher computer
 Storage: In-room Cabinets as noted above

OTHER INFORMATION:

Visibility: -





MAKERSPACE

FUNCTIONAL CRITERIA

Description: Project based Learning Classroom
 Area: 1,200sf Classrooms
 Quantity: 1
 Occupants: +/- 24 students+ teacher

LOCATION/ORIENTATION CRITERIA

Users: teachers and students
 Adjacencies: Fine Arts + Stage
 Orientation: -
 Views: -

TECHNICAL CRITERIA

Floor/Base: sealed concrete/ rubber base
 Walls: multi-layer gypsum wall board, fry-reglet at 8'-0", painted
 Ceiling: exposed painted exposed ceilings with 50% ACT Clouds + overhead Unistrut/pipe grid
 Door/Frame: solid wood door and 3' wide sidelight glass with solid roller shade
 Windows: thermally broken aluminum frames, w/ operable awnings; triple glazed, hurricane glass. Insect screens and mesh roll down mesh shade (10% open.) Built-in gwb light shelf at south facing windows
 Lighting: LED pendant direct/indirect with daylight dimming and occupancy sensors
 Power: convenience outlets w/ USB; overhead cord reels
 Data/Com: telephone at desk, intercom, wireless

access point, data outlets, presentation outlet, data projector, sound reinforcement & wireless clock

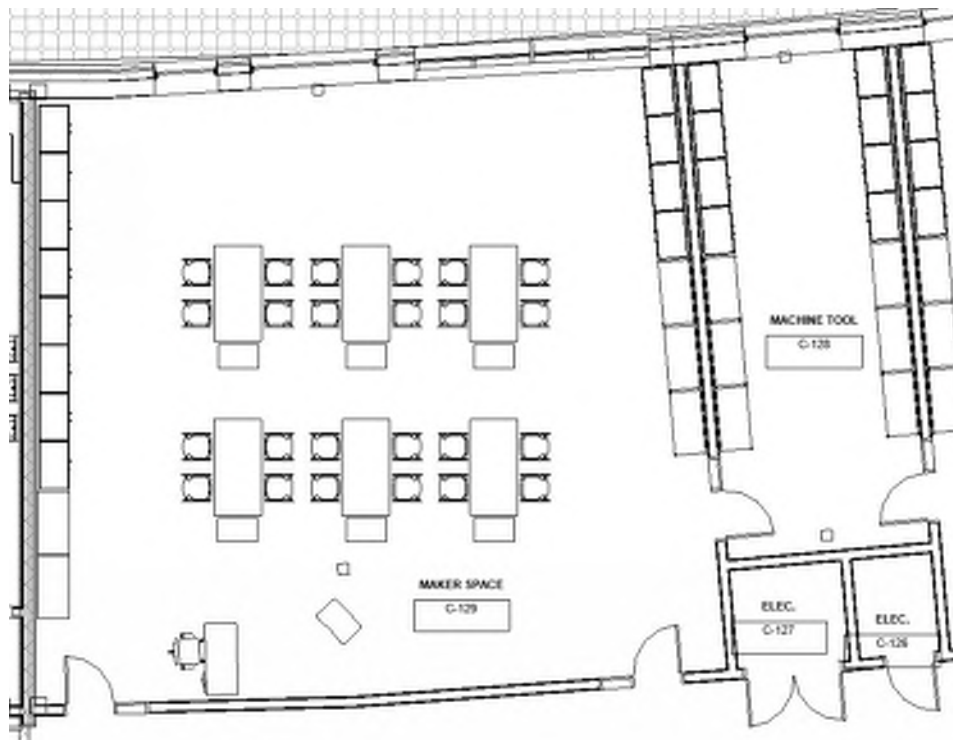
Security: Similar to General Classrooms
 Acoustical: Refer to Acoustical Report
 Mechanical: Refer to Mechanical Narrative
 Plumb/Fire: Refer to plumbing/fire protection narrative

FIXTURES / FURNISHINGS

Casework: Tall storage cabinets
 Furnishings: Teacher desk, teacher task chair, student butcherblock work tables, student stools, mobile storage units, industrial metal shelving, white boards, tack boards
 Equipment: Teacher computer, 3D printer, laser cutter
 Storage: In-room storage as noted above

OTHER INFORMATION:

Visibility: Sidelights at doorway entrances are compatible with the District's standards related to visibility from the corridor.





MACHINE TOOL

FUNCTIONAL CRITERIA

Description: Machine Classroom
 Area: 500sf Classrooms
 Quantity: 1
 Occupants: TBD

LOCATION/ORIENTATION CRITERIA

Users: teachers and students
 Adjacencies: Robotics + Makerspace
 Orientation: -
 Views: -

TECHNICAL CRITERIA

Floor/Base: sealed concrete/ rubber base
 Walls: multi-layer gypsum wall board, fry-reglet at 8'-0", painted
 Ceiling: exposed painted exposed ceilings with 50% ACT Clouds + overhead Unistrut/pipe grid
 Door/Frame: solid wood door and 3' wide sidelight glass with solid roller shade
 Windows: thermally broken aluminum frames, w/ operable awnings; triple glazed, hurricane glass. Insect screens and mesh roll down mesh shade (10% open.) Built-in gwb light shelf at south facing windows
 Lighting: LED pendant direct/indirect with daylight dimming and occupancy sensors
 Power: convenience outlets w/ USB; overhead cord reels
 Data/Com: telephone at desk, intercom, wireless

access point, data outlets, presentation outlet, data projector, sound reinforcement & wireless clock

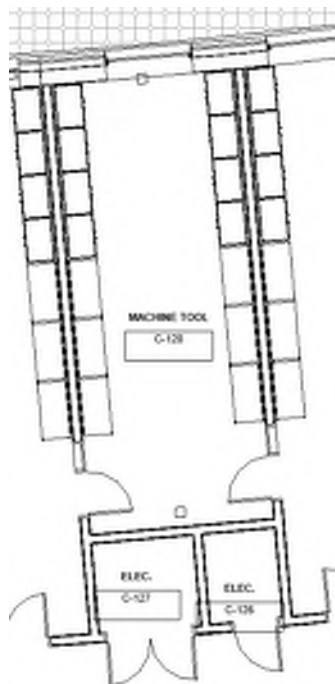
Security: Similar to General Classrooms
 Acoustical: Refer to Acoustical Report
 Mechanical: Refer to Mechanical Narrative
 Plumb/Fire: Refer to plumbing/fire protection narrative

FIXTURES / FURNISHINGS

Casework: N/A
 Furnishings: Industrial metal shelving
 Equipment: -
 Storage: N/A

OTHER INFORMATION:

Visibility: -





JROTC CLASSROOM

FUNCTIONAL CRITERIA

Description: primary teaching and learning space
 Area: 900sf Classrooms
 Quantity: 3
 Occupants: +/- 24 students+ teacher

LOCATION/ORIENTATION CRITERIA

Users: teachers and students
 Adjacencies: Other JROTC Classrooms + Storage
 Orientation: South
 Views: Courtyard

TECHNICAL CRITERIA

Floor/Base: linoleum tile floor/ rubber base
 Walls: multi-layer gypsum wall board, fry-reglet at 8'-0", painted
 Ceiling: high light reflectance ceiling tile (.90 LRV); slopes from 8'-8" up to 10'-8" at windows
 Door/Frame: solid wood door and 3' wide sidelight glass with solid roller shade
 Windows: thermally broken aluminum frames, w/ operable awnings; triple glazed, hurricane glass. Insect screens and mesh roll down mesh shade (10% open.) Built-in gwb light shelf at south facing windows

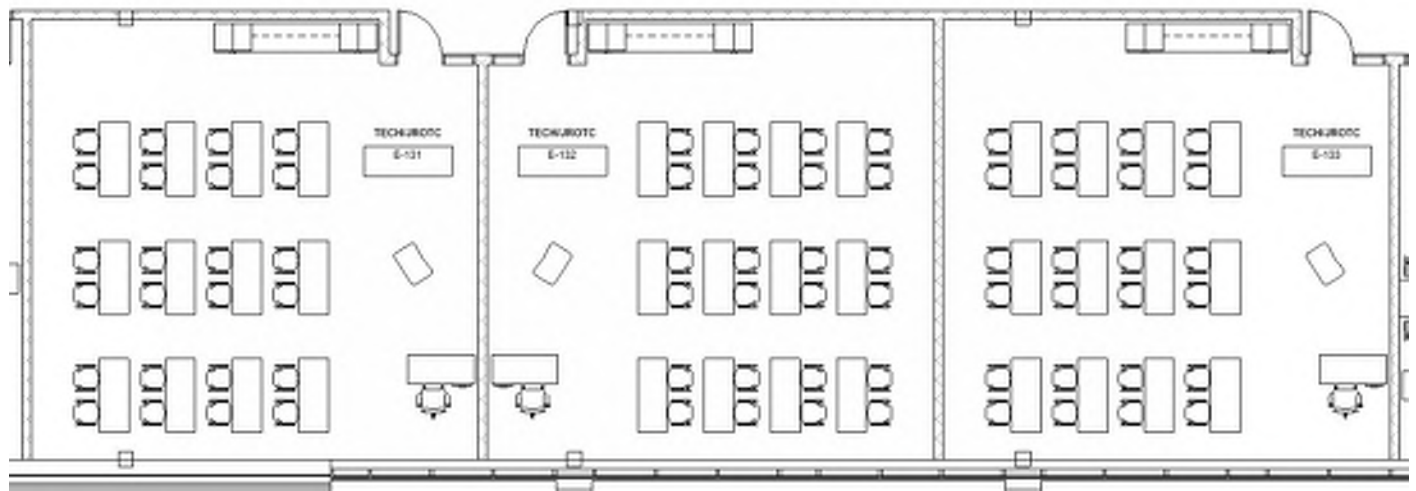
Lighting: LED pendant direct/indirect with daylight dimming and occupancy sensors
 Power: convenience outlets w/ USB
 Data/Com: telephone at desk, intercom, wireless access point, data outlets, presentation outlet, data projector, sound reinforcement & wireless clock
 Security: Same as General Classrooms
 Acoustical: Refer to Acoustical Report
 Mechanical: Refer to Mechanical Narrative
 Plumb/Fire: Refer to plumbing/fire protection narrative

FIXTURES / FURNISHINGS

Casework: Tall storage cabinets
 Furnishings: Teacher desk, teacher task chair, student work tables, student chairs, white board, tack board
 Equipment: Teacher computer
 Storage: In-room storage as noted above

OTHER INFORMATION:

Visibility: Sidelights at doorway entrances are compatible with the District's standards related to visibility from the corridor.





JROTC STAFF+CHANGING+ WORK + STORAGE

FUNCTIONAL CRITERIA

Description: Spaces to support JROTC program
Area: approx. 1780sf (480sf+ (5) 40sf+300sf+800sf)
Quantity: 1 each except (5) Changing Rooms
Occupants: -

LOCATION/ORIENTATION CRITERIA

Users: teachers and students/cadets
Adjacencies: JROTC Classrooms
Orientation: -
Views: -

TECHNICAL CRITERIA

Floor/Base: linoleum tile floor/ rubber base
Walls: multi-layer AR-GWB wall board
Ceiling: high light reflectance ceiling tile (.90 LRV);
Door/Frame: solid wood doors and 3' wide sidelight glass at Suite entry and Conf. entry (with solid roller shades)
Windows: -
Lighting: LED pendant direct/indirect with daylight dimming and occupancy sensors
Power: convenience outlets w/ USB

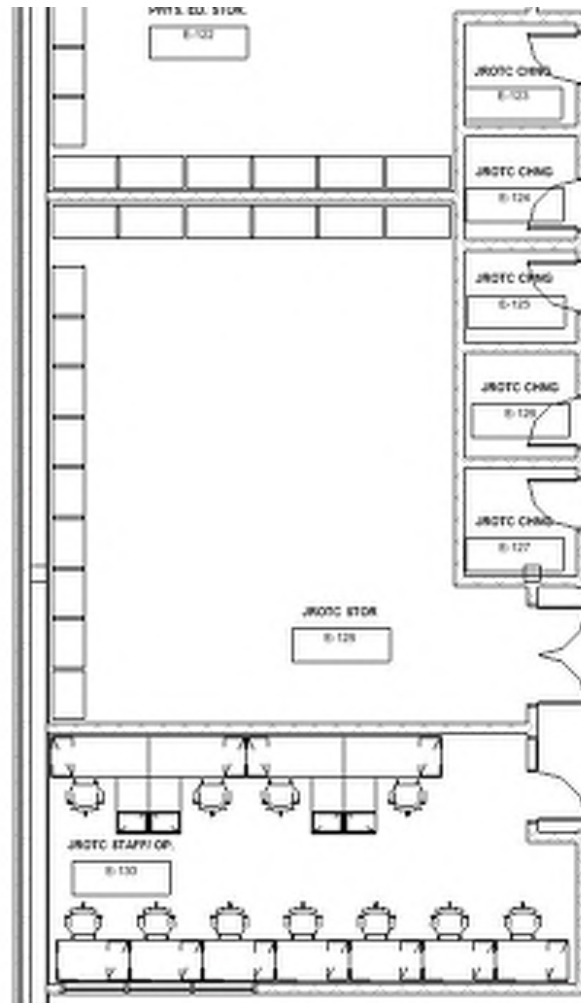
Data/Com: TBD
Security: Same as General Classrooms
Acoustical: Refer to Acoustical Report
Mechanical: Refer to Mechanical Narrative
Plumb/Fire: Refer to plumbing/fire protection narrative

FIXTURES / FURNISHINGS

Casework: N/A
Furnishings: Office desks, task chair, guest chair, lateral file, bookcase, industrial metal shelving
Equipment: Lockers, teacher computers
Storage: N/A

OTHER INFORMATION:

Visibility: -





JROTC DRILLS

FUNCTIONAL CRITERIA

Description: Drill Space
Area: 3000sf
Quantity: 1
Occupants: --

Acoustical: Refer to Acoustical Report
Mechanical: Refer to Mechanical Narrative
Plumb/Fire: Refer to plumbing/fire protection narrative

LOCATION/ORIENTATION CRITERIA

Users: ROTC Teachers/Students
Adjacencies: Main Gym
Orientation: West
Views: -

FIXTURES / FURNISHINGS

Casework: N/A
Furnishings: N/A
Equipment: -
Storage: N/A

OTHER INFORMATION:

Visibility: N/A

TECHNICAL CRITERIA

Floor/Base: Rubber Athletic Floor
Walls: CMU
Ceiling: Painted Exposed Acoustical Deck
Doors: -
Windows: Surtainwall
Lighting: LED Pendants
Power: convenience outlets
Data/Com: -
Security: cameras throughout building





GYMNASIUM (includes ADAPTIVE PE)

FUNCTIONAL CRITERIA

Description: Gymnasium
Area: 15,000SF + 3,000sf
Quantity: 1- Operable Wall and Divider Curtains
Occupants: --

LOCATION/ORIENTATION CRITERIA

Users: Teachers/Staff/Students/Parents/Public
Adjacencies: Public Entrance, Storage, Locker Rooms
Orientation: North/South
Views: Yes

TECHNICAL CRITERIA

Floor/Base: Athletic Wood/Vented Base
Walls: Acoustical CMU walls
Ceiling: Painted Exposed, Acoustical Deck
Doors: Glass Doors and (4) Folding Walls
Windows: thermally broken aluminum frames, w/ operable awnings; triple glazed, hurricane glass. Insect screens and mesh roll down mesh shade (10% open.) Built-in gwb light shelf at south facing windows

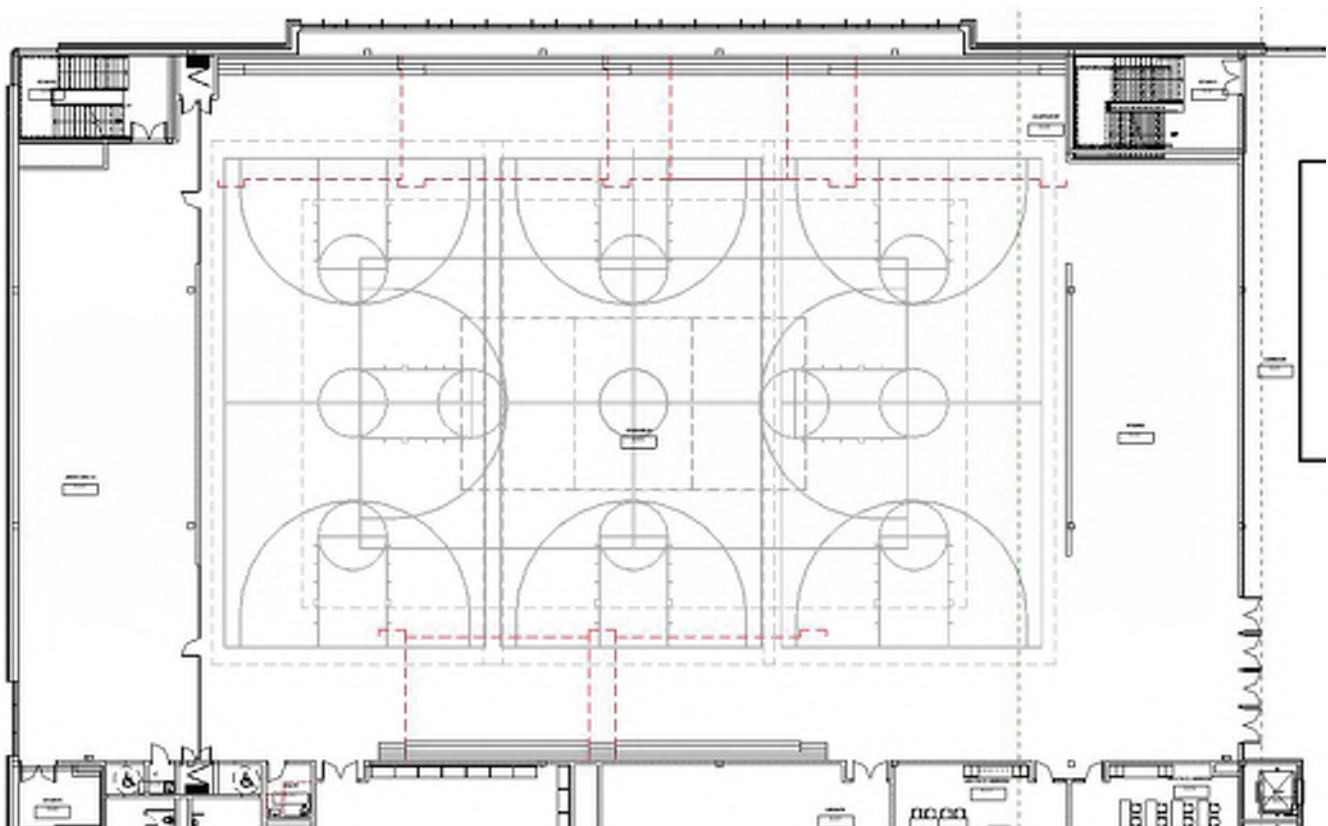
Lighting: LED Pendants
Power: convenience outlets, (4) sets wall mounted scoreboards
Data/Com: telephone, intercom, wireless access point, local sound system & wireless clock
Security: cameras throughout building
Acoustical: sound absorbing deck and walls
Mechanical: Refer to Mechanical Narrative
Plumb/Fire: Refer to plumbing/fire protection narrative

FIXTURES / FURNISHINGS

Casework: N/A
Furnishings: (8) Vinyl gym divider curtains w/ mesh + (8) Glass Backboards retractable- adjustable height + (2) adjustable chin up bar+ (2) sets of ceiling mounted climbing ropes + (4) sets of carbon fiber insets volleyball sleeves
Equipment: Movable risers, sports equipment
Storage: separate storage rooms

OTHER INFORMATION:

Visibility: N/A





PE ALTERNATIVES (STRENGTH & FITNESS)

FUNCTIONAL CRITERIA

Description: Alternate Gymnasium
Area: 1,500SF
Quantity: 2 (two spaces- Strength + Fitness)
Occupants: --

LOCATION/ORIENTATION CRITERIA

Users: Teachers/Staff/Students/Parents/Public
Adjacencies: Gymnasium, Lockers, Trainer
Orientation: -
Views: -

TECHNICAL CRITERIA

Floor/Base: Rubber Athletic Flooring
Walls: CMU Acoustical walls
Ceiling: Painted Exposed Acoustical Deck
Doors: solid wood doors, + two operable walls to gym
Windows: n/a
Lighting: LED Pendants
Power: convenience outlets
Data/Com: telephone, intercom, wireless access point, local sound system & wireless clock
Security: cameras throughout building
Acoustical: sound absorbing deck and walls
Mechanical: Refer to Mechanical Narrative
Plumb/Fire: Refer to plumbing/fire protection narrative

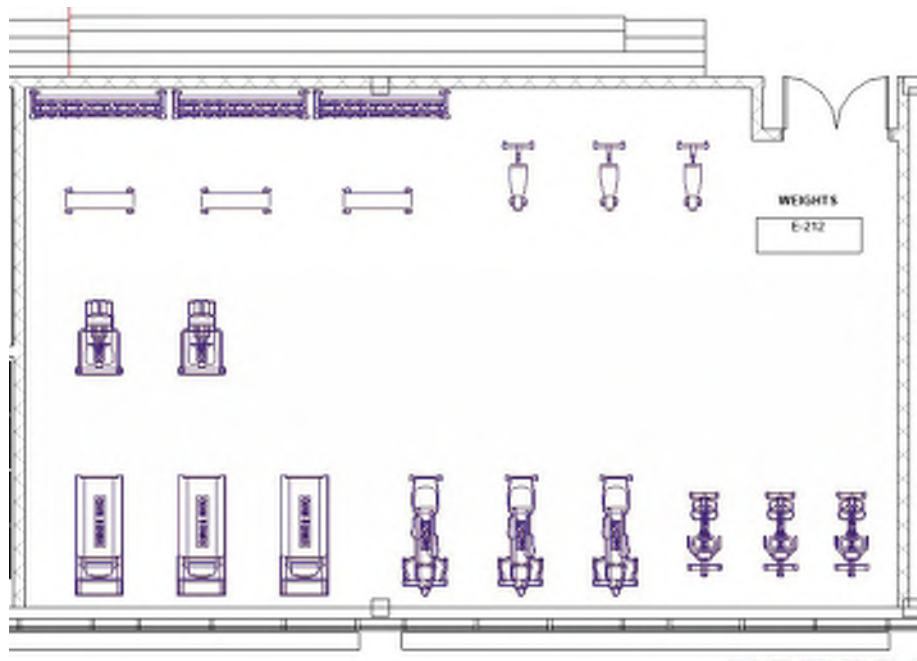
FIXTURES / FURNISHINGS

Casework: N/A
Furnishings: -
Equipment: stationary bikes, treadmills, stair masters, kettle bells and racks, ball rack, conditioning equipment, cardio equipment, weight lifting equipment and benches, yoga mats

Storage: -

OTHER INFORMATION:

Visibility: N/A





GYM STOREROOM

FUNCTIONAL CRITERIA

Description: Storage
Area: 1,800SF
Quantity: 1
Occupants: --

LOCATION/ORIENTATION CRITERIA

Users: Teachers/Staff/Students
Adjacencies: Gymnasium, Lockers, Trainer
Orientation: -
Views: -

TECHNICAL CRITERIA

Floor/Base: Rubber Athletic Flooring
Walls: CMU Acoustical walls
Ceiling: Painted Exposed Acoustical Deck
Doors: solid wood doors,
Windows: thermally broken aluminum frames, w/
operable awnings; triple glazed, hurricane
glass. Insect screens and mesh roll
down mesh shade (10% open.) Built-in
gwb light shelf at south facing windows
Lighting: LED Pendants
Power: convenience outlets
Data/Com: telephone, intercom, wireless access point, local
sound system & wireless clock

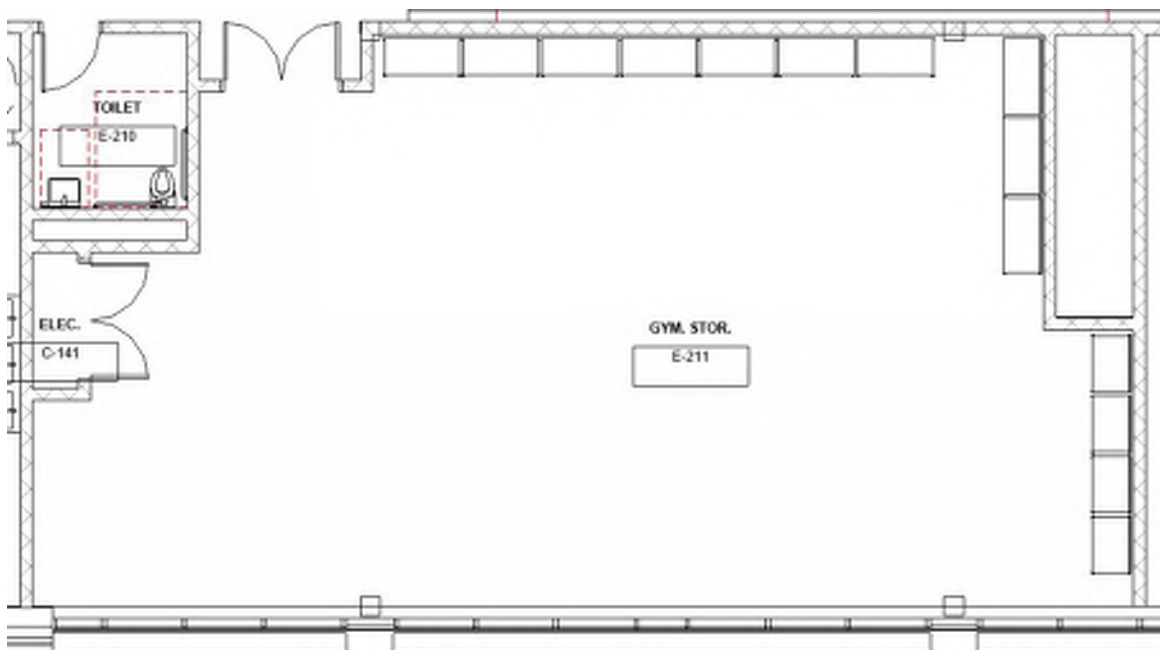
Security: cameras throughout building
Acoustical: Refer to Acoustical Report
Mechanical: Refer to Mechanical Narrative
Plumb/Fire: Refer to plumbing/fire protection narrative

FIXTURES / FURNISHINGS

Casework: N/A
Furnishings: N/A
Equipment: Industrial metal shelving
Storage: N/A

OTHER INFORMATION:

Visibility: N/A





LOCKER ROOMS/TEAM ROOMS

FUNCTIONAL CRITERIA

Description: PE & Athletic Locker Rooms
Area: 5,500SF
Quantity: 2
Occupants: --

LOCATION/ORIENTATION CRITERIA

Users: Students, teachers, coaches
Adjacencies: Gym, Strength/Fitness, Wrestling
Orientation: -
Views: -

TECHNICAL CRITERIA

Floor/Base: Epoxy Floors and integral base
Walls: CMU painted walls
Ceiling: painted moisture resistant GWB Ceiling
Doors: solid wood doors,
Windows: N/A

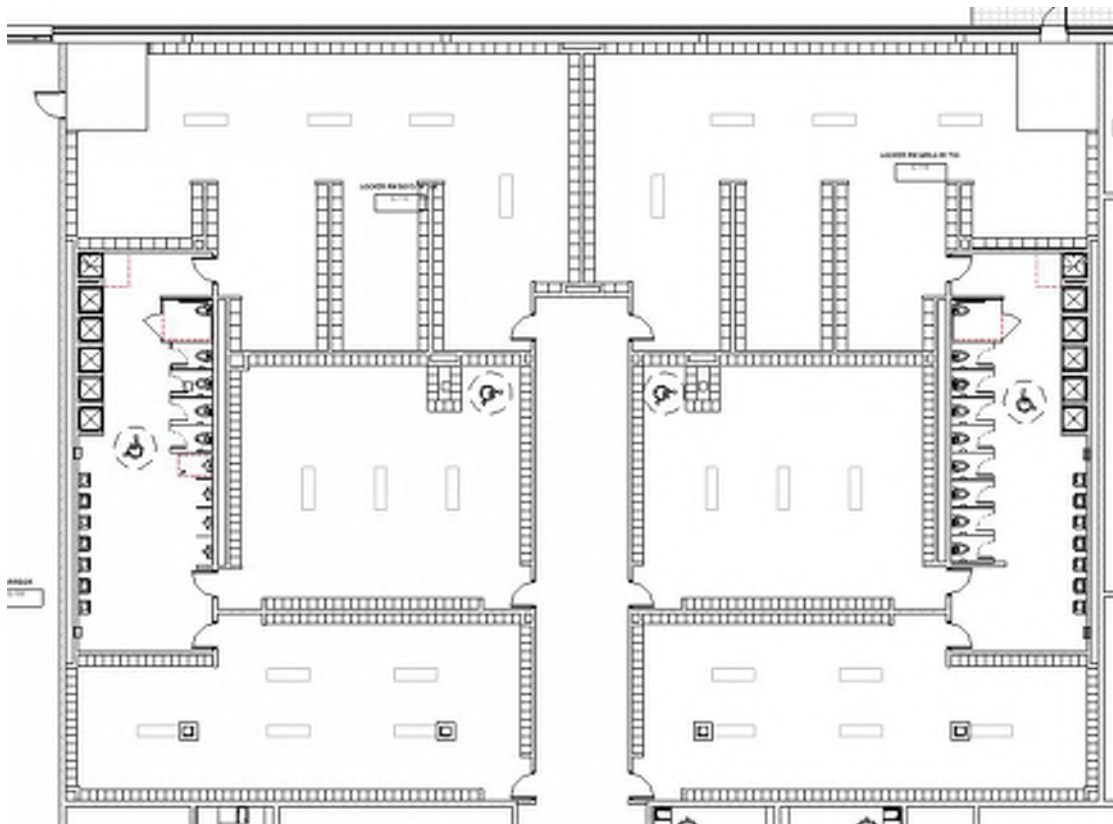
Lighting: LED surfacemounted fixtures
Power: convenience outlets
Data/Com: telephone, intercom, wireless access point, local sound system & wireless clock
Security: cameras throughout building
Acoustical: Refer to Acoustical Report
Mechanical: Refer to Mechanical Narrative
Plumb/Fire: Refer to plumbing/fire protection narrative

FIXTURES / FURNISHINGS

Casework: -
Furnishings: -
Equipment: lockers and benches
Storage: -

OTHER INFORMATION:

Visibility: N/A





TEAM ROOM

FUNCTIONAL CRITERIA

Description: Team Room
Area: 1,000SF
Quantity: 1
Occupants: --

LOCATION/ORIENTATION CRITERIA

Users: Students, teachers, coaches
Adjacencies: Gym, Strength/Fitness, Wrestling
Orientation: -
Views: -

TECHNICAL CRITERIA

Floor/Base: Epoxy Floors and integral base
Walls: CMU painted walls
Ceiling: painted moisture resistant GWB Ceiling
Doors: solid wood doors,
Windows: N/A

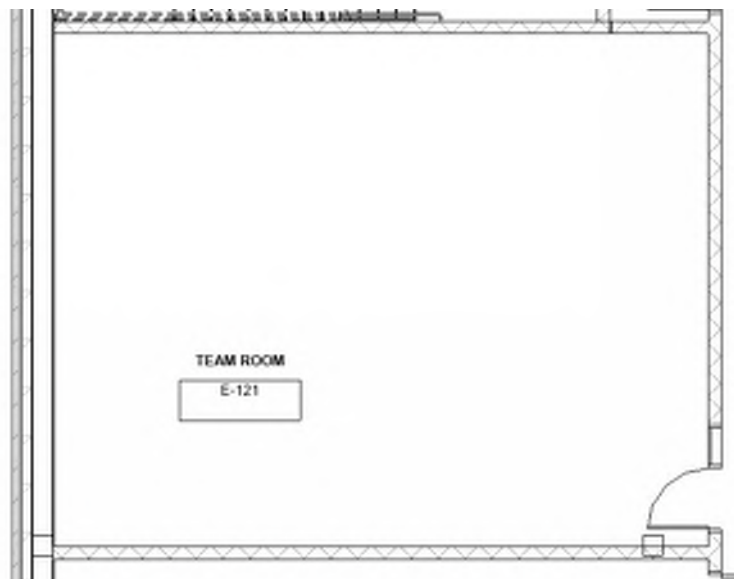
Lighting: LED surfacemounted fixtures
Power: convenience outlets
Data/Com: telephone, intercom, wireless access point, local sound system & wireless clock
Security: cameras throughout building
Acoustical: Refer to Acoustical Report
Mechanical: Refer to Mechanical Narrative
Plumb/Fire: Refer to plumbing/fire protection narrative

FIXTURES / FURNISHINGS

Casework: -
Furnishings: -
Equipment: lockers and benches
Storage: -

OTHER INFORMATION:

Visibility: N/A





PHYSICAL EDUCATION STORAGE

FUNCTIONAL CRITERIA

Description: Storage
Area: 500SF
Quantity: 1
Occupants: --

LOCATION/ORIENTATION CRITERIA

Users: Teachers/Staff/Students
Adjacencies: Gymnasium, Lockers, Trainer
Orientation: -
Views: -

TECHNICAL CRITERIA

Floor/Base: Rubber Athletic Flooring
Walls: CMU Acoustical walls
Ceiling: Painted Exposed Acoustical Deck
Doors: solid wood doors,
Windows: thermally broken aluminum frames, w/
operable awnings; triple glazed, hurricane
glass. Insect screens and mesh roll
down mesh shade (10% open.) Built-in
gwb light shelf at south facing windows
Lighting: LED Pendants
Power: convenience outlets
Data/Com: telephone, intercom, wireless access point, local
sound system & wireless clock

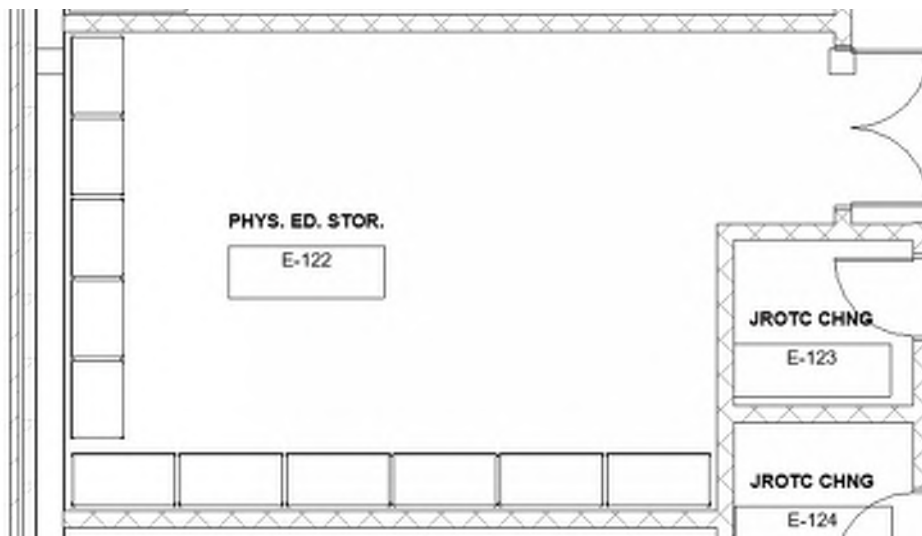
Security: cameras throughout building
Acoustical: Refer to Acoustical Report
Mechanical: Refer to Mechanical Narrative
Plumb/Fire: Refer to plumbing/fire protection narrative

FIXTURES / FURNISHINGS

Casework: -
Furnishings: -
Equipment: Industrial metal shelving
Storage: -

OTHER INFORMATION:

Visibility: N/A





ATHLETIC DIRECTOR OFFICE

FUNCTIONAL CRITERIA

Description: Office
Area: 150SF
Quantity: 1
Occupants: --

Security: cameras throughout building
Acoustical: Refer to Acoustical Report
Mechanical: Refer to Mechanical Narrative
Plumb/Fire: Refer to plumbing/fire protection narrative

LOCATION/ORIENTATION CRITERIA

Users: Teachers/Staff/Students
Adjacencies: Gymnasium, Lockers, Trainer
Orientation: -
Views: -

FIXTURES / FURNISHINGS

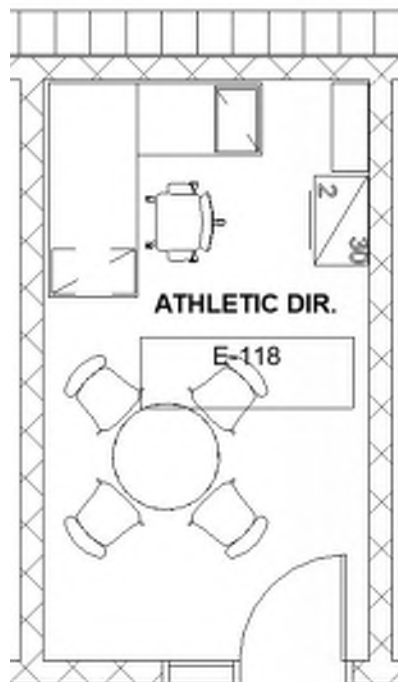
Casework: N/A
Furnishings: Office desk, task chair, filing, bookcase
Equipment: Staff computer, desktop printer
Storage: N/A

TECHNICAL CRITERIA

Floor/Base: Rubber Athletic Flooring
Walls: CMU Acoustical walls
Ceiling: Painted Exposed Acoustical Deck
Doors: solid wood doors,
Windows: thermally broken aluminum frames, w/
operable awnings; triple glazed, hurricane
glass. Insect screens and mesh roll
down mesh shade (10% open.) Built-in
gwb light shelf at south facing windows
Lighting: LED Pendants
Power: convenience outlets
Data/Com: telephone, intercom, wireless access point, local
sound system & wireless clock

OTHER INFORMATION:

Visibility: N/A





HEALTH INSTRUCTOR'S OFFICE (+ SHOWER+ TOILET)

FUNCTIONAL CRITERIA

Description: Office w/ Shower + Toilet
Area: 235SF
Quantity: 2
Occupants: --

Security: cameras throughout building
Acoustical: Refer to Acoustical Report
Mechanical: Refer to Mechanical Narrative
Plumb/Fire: Refer to plumbing/fire protection narrative

LOCATION/ORIENTATION CRITERIA

Users: Teachers/Staff/Students
Adjacencies: Gymnasium, Lockers, Trainer
Orientation: -
Views: -

FIXTURES / FURNISHINGS

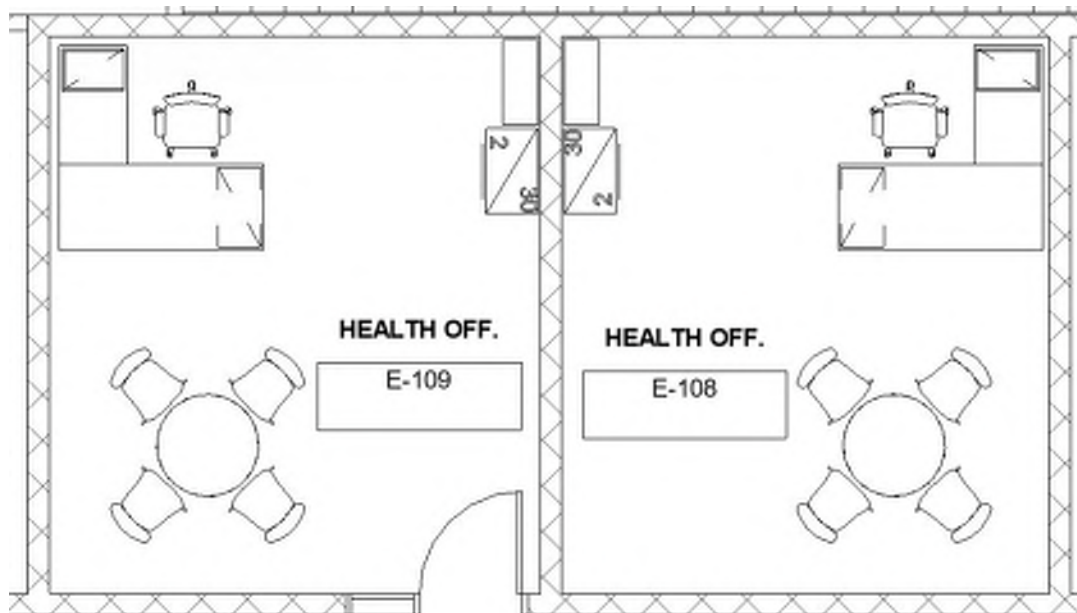
Casework: N/A
Furnishings: Office desk, task chair, filing, bookcase, meeting table, guest chair
Equipment: Staff computer, desktop printer
Storage: N/A

TECHNICAL CRITERIA

Floor/Base: Rubber Athletic Flooring
Walls: CMU Acoustical walls
Ceiling: Painted Exposed Acoustical Deck
Doors: solid wood doors,
Windows: thermally broken aluminum frames, w/ operable awnings; triple glazed, hurricane glass. Insect screens and mesh roll down mesh shade (10% open.) Built-in gwb light shelf at south facing windows
Lighting: LED Pendants
Power: convenience outlets
Data/Com: telephone, intercom, wireless access point, local sound system & wireless clock

OTHER INFORMATION:

Visibility: N/A





MEDIA COMMONS + MEDIA READING ROOM + COMPUTER LAB+ MEETING ROOMS+OFF

FUNCTIONAL CRITERIA

Description: Media Commons, Reading Room + Comp Lab+ Meeting Rooms

Area: (2 @5,000sf + 1,000sf Comp Lab + (2) @200sf Meeting Rooms+ 413sf Office

Quantity: -

Occupants: -

Lighting: down mesh shade (10% open.) Built-in gwb light shelf at south facing windows
LED pendant direct/indirect with daylight dimming and occupancy sensors

Power: Convenience Outlets

Data/Com: Telephone, intercom, wireless access point, data outlets, presentation outlet, data projector, sound reinforcement & wireless clock

LOCATION/ORIENTATION CRITERIA

Users: students, teachers and community groups

Adjacencies: Heart of the School + Classrooms

Orientation: East/West

Views: Yes

Security: cameras throughout building

Acoustical: Refer to Acoustical Report

Mechanical: Refer to Mechanical Narrative

Plumb/Fire: Refer to plumbing/fire protection narrative

TECHNICAL CRITERIA

Floor/Base: Commons: Terrazzo Tile+ Base, Reading: Carpet/rubber base, Comp Lab + Office:Linoleum + Rubber Base

Walls: multi-layer gypsum board, painted

Ceiling: exposed painted exposed ceilings with 50% ACT Clouds + overhead Unistrut/pipe grid OR CLT exposed

Door/Frame: solid wood doors and sidelight glazing, entry doors to be interior storefront with aluminum doors

Windows: thermally broken aluminum frames, w/ operable awnings; triple glazed, hurricane glass. Insect screens and mesh roll

FIXTURES / FURNISHINGS

Casework: Tall storage cabinets, counter with upper/lower cabinets

Furnishings: Circulation desk, task chair, single and double sided library shelving units, student computer and reading tables, meeting tables, study chairs, soft seating, side tables, white boards, tack boards

Equipment: Staff computers, printers, copiers

Storage: In-room Cabinets as noted above

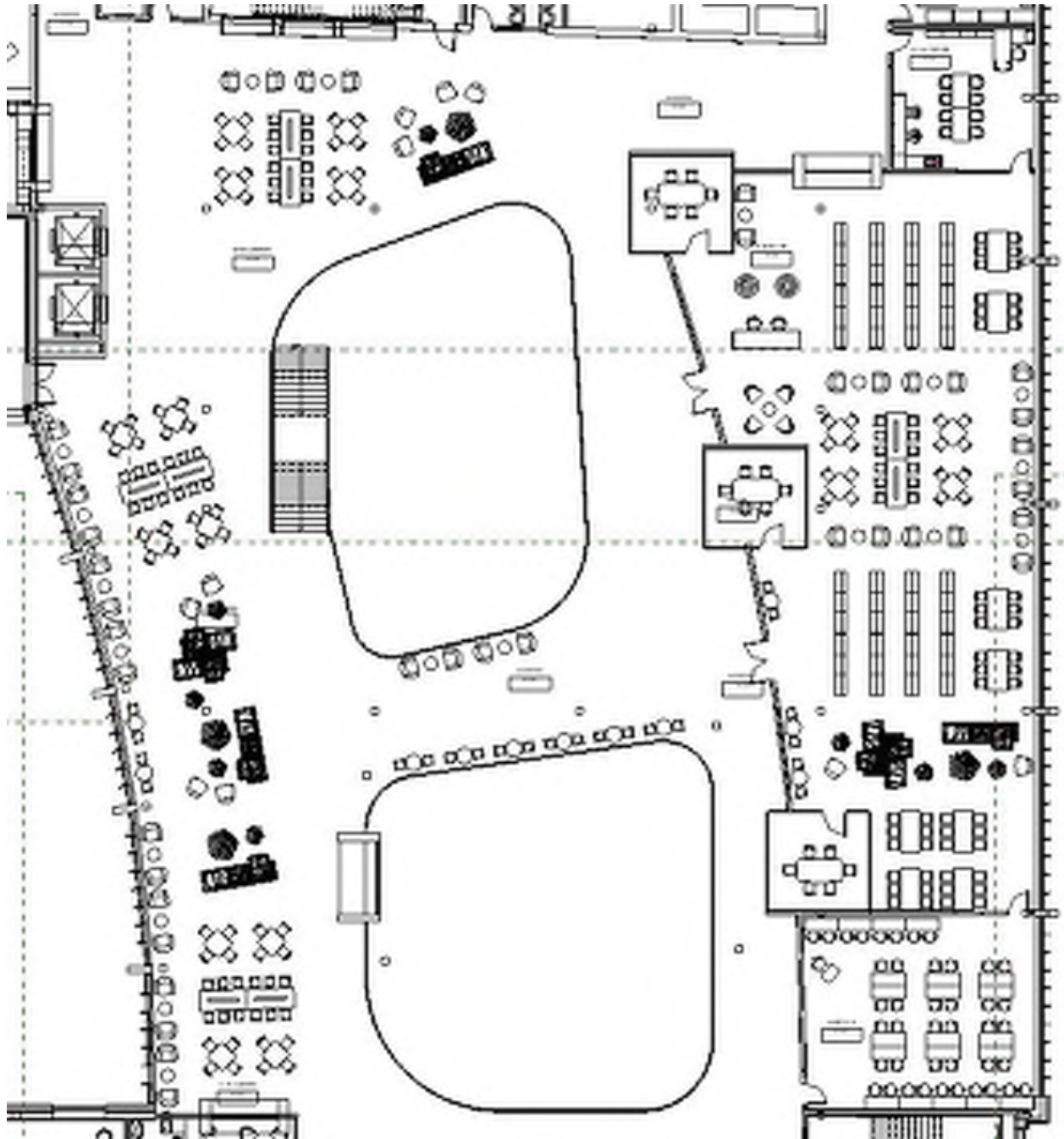
OTHER INFORMATION:

Visibility: -

PLANS CONTINUED ON NEXT PAGE



MEDIA COMMONS + MEDIA READING ROOM + COMPUTER LAB+ MEETING ROOMS+OFF





STEM/Writing Centers+ DE & CREDIT RECOVERY STATIONS + MEETING ROOMS

FUNCTIONAL CRITERIA

Description: Media Commons Support Spaces
 Area: (2 @1,000sf + 1,000sf + (2) @200sf Meeting Rooms
 Quantity: -
 Occupants: -

Lighting: gwb light shelf at south facing windows
 LED pendant direct/indirect with daylight dimming and occupancy sensors
 Power: Convenience Outlets
 Data/Com: Telephone, intercom, wireless access point, data outlets, presentation outlet, data projector, sound reinforcement & wireless clock

LOCATION/ORIENTATION CRITERIA

Users: students, teachers and community groups
 Adjacencies: Heart of the School + Classrooms
 Orientation: East/West
 Views: Yes

Security: cameras throughout building
 Acoustical: Refer to Acoustical Report
 Mechanical: Refer to Mechanical Narrative
 Plumb/Fire: Refer to plumbing/fire protection narrative

TECHNICAL CRITERIA

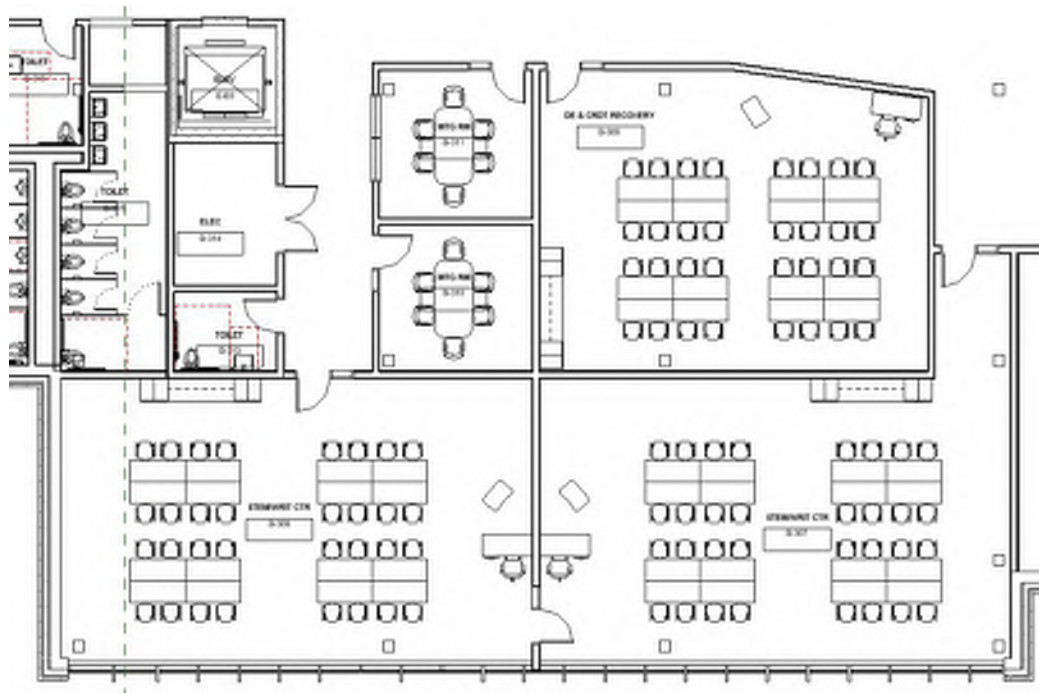
Floor/Base: Linoleum + RB
 Walls: multi-layer gypsum board, painted
 Ceiling: exposed painted exposed ceilings with 50% ACT Clouds + overhead Unistrut/pipe grid OR CLT exposed
 Door/Frame: solid wood doors and sidelight glazing, entry doors to be interior storefront with aluminum doors
 Windows: thermally broken aluminum frames, w/ operable awnings; triple glazed, hurricane glass. Insect screens and mesh roll down mesh shade (10% open.) Built-in

FIXTURES / FURNISHINGS

Casework: Tall storage cabinets
 Furnishings: Teacher desk, teacher task chair, student work tables, student chairs, meeting tables, guest chairs
 Equipment: Staff computers
 Storage: In-room Cabinets as noted above

OTHER INFORMATION:

Visibility: -





AUDITORIUM & STAGE

FUNCTIONAL CRITERIA

Description: Auditorium / performance space
Area: 10,000sf
Quantity: 1
Occupants: seating for 1,000

LOCATION/ORIENTATION CRITERIA

Users: students, teachers and community groups
Adjacencies: Band & Chorus Rooms, Make-up, Storage, outdoor performance space
Orientation: all directions (high volume), back wall of stage faces North
Views: Outdoor Performance Space

TECHNICAL CRITERIA

Floor/Base: Stage: stained hardwood sprung floor, vented rubber cover base; House: polished concrete under seating, carpet at aisles
Walls: Stage: epoxy paint CMU; House: 50% stretched fabric over mineral wool backing, 50% perforated wood-look laminate panels @ backwall, 20% stretched fabric over mineral wool backing @ side walls
Ceiling: Exposed structure, painted, acoustic deck; painted GWB with suspended acoustical panels; acoustic reflectors
Door/Frame: Solid Wood Doors in Hollow Metal Frames

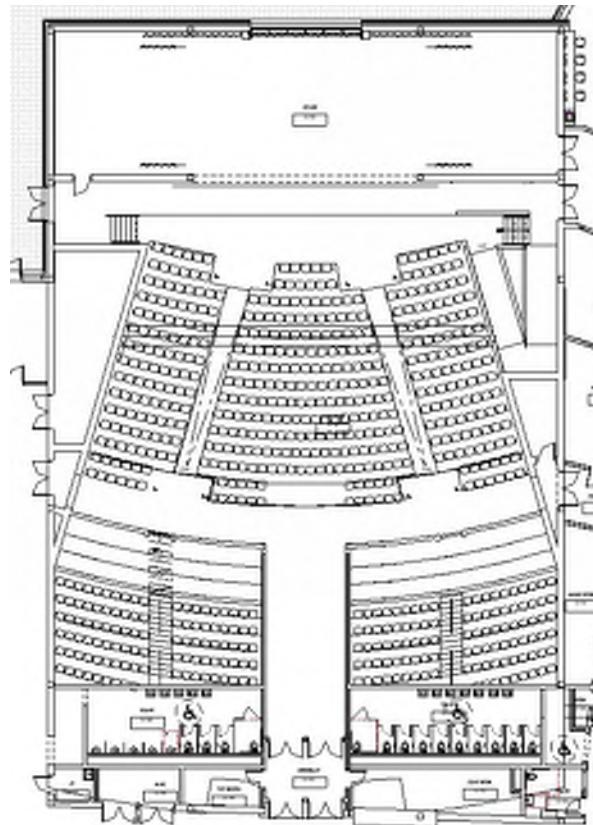
Windows: Curtain wall at back of stage
Lighting: Lighting pipes (1.5" N.P.S. Schedule 40), lighting-catwalk; integrated LED aisle lights
Power: Outlets/data where required, and for two spotlight locations behind top level of seats
Data/Com: Data projector w/ AV
Security: Cameras throughout bldg
Acoustical: Ceiling hung acoustical clouds over stage thrust, fabric covered acoustical panels at high walls
Mechanical: Refer to mechanical narrative
Plumb/Fire: Refer to plumbing/fire protection narrative

FIXTURES / FURNISHINGS

Casework: N/A
Furnishings: Fixed auditorium seating
Equipment: Stage rigging
Storage: N/A

OTHER INFORMATION:

Visibility: N/A





CAFETERIA

FUNCTIONAL CRITERIA

Description: student dining & multi-purpose
Area: 9,000sf, open to Lobby + Heart of the School
Quantity: 1
Occupants: seating for 615 students

LOCATION/ORIENTATION CRITERIA

Users: students, faculty and community groups
Adjacencies: kitchen, heart of the school, & courtyard
Orientation: west (will receive low/direct light)
Views: Courtyard

TECHNICAL CRITERIA

Floor/Base: Terrazzo Tile+ Base
Walls: multi-layer gypsum board, painted with Porcelain tile wainscot
Ceiling: exposed painted exposed ceilings with 50% ACT Clouds + overhead Unistrut/pipe grid OR CLT exposed
Door/Frame: thermally broken aluminum curtainwall
Windows: thermally broken aluminum curtainwall
Lighting: LED pendants
Power: (extra) convenience outlets with USB charging on all walls

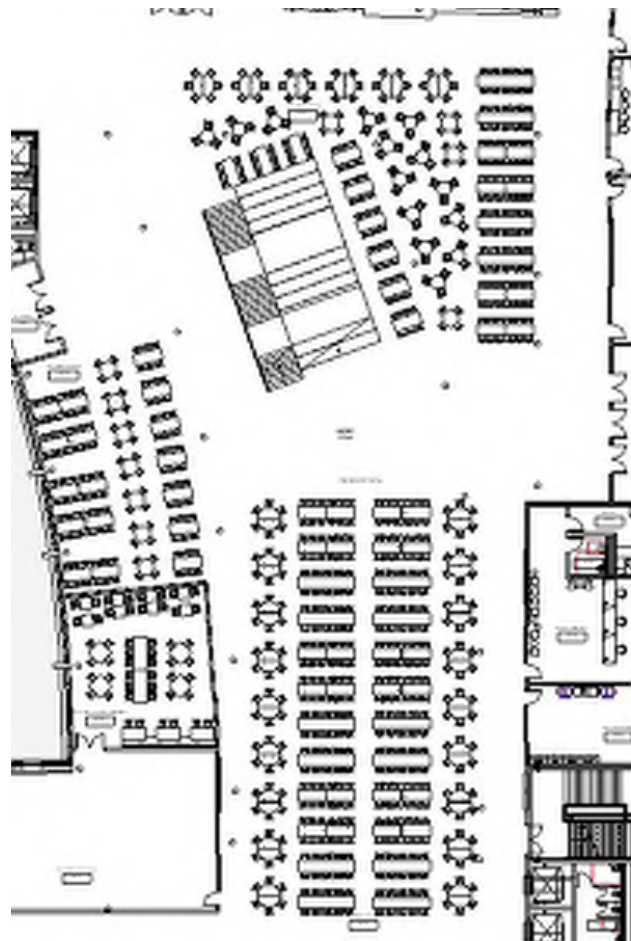
Data/Com: wireless access point, digital signage, local sound system, POS data & wireless clock
Security: This space is open, which allows evacuation in many different directions. The caf will have camera surveillance and intrusion detection. As a 3-story space, attention will be given to the guard rail design to prevent students from climbing, falling or allowing a fire-arm to be easily positioned for targeting those below. Communications and nearby medical devices are to be provided for emergency situations.
Acoustical: Refer to Acoustical Report
Mechanical: Refer to Mechanical Narrative
Plumb/Fire: Refer to plumbing/fire protection narrative

FIXTURES / FURNISHINGS

Casework: N/A
Furnishings: folding cafeteria tables w/attached stools, bistro tables/chairs, booth seating w/tables
Equipment: -
Storage: separate storage

OTHER INFORMATION:

Visibility: N/A





FRESHMAN CAFETERIA

FUNCTIONAL CRITERIA

Description: student dining & multi-purpose
 Area: 3,250sf, open to Heart of the School (2nd Fl)
 Quantity: 1
 Occupants: seating for 205 students

LOCATION/ORIENTATION CRITERIA

Users: students, faculty and community groups
 Adjacencies: kitchen, heart of the school
 Orientation: west (will receive low/direct light)
 Views: Courtyard

TECHNICAL CRITERIA

Floor/Base: Terrazzo Tile+ Base
 Walls: multi-layer gypsum board, painted with Porcelain tile wainscot
 Ceiling: exposed painted exposed ceilings with 50% ACT Clouds + overhead Unistrut/pipe grid OR CLT exposed
 Door/Frame: thermally broken aluminum curtainwall
 Windows: thermally broken aluminum curtainwall
 Lighting: LED pendants
 Power: (extra) convenience outlets with USB charging on all walls

Data/Com: wireless access point, digital signage, local sound system, POS data & wireless clock

Security: This space is open, which allows evacuation in many different directions. The caf will have camera surveillance and intrusion detection. As a 3-story space, attention will be given to the guard rail design to prevent students from climbing, falling or allowing a fire-arm to be easily positioned for targeting those below. Communications and nearby medical devices are to be provided for emergency situations.

Acoustical: Refer to Acoustical Report

Mechanical: Refer to Mechanical Narrative

Plumb/Fire: Refer to plumbing/fire protection narrative

FIXTURES / FURNISHINGS

Casework: N/A

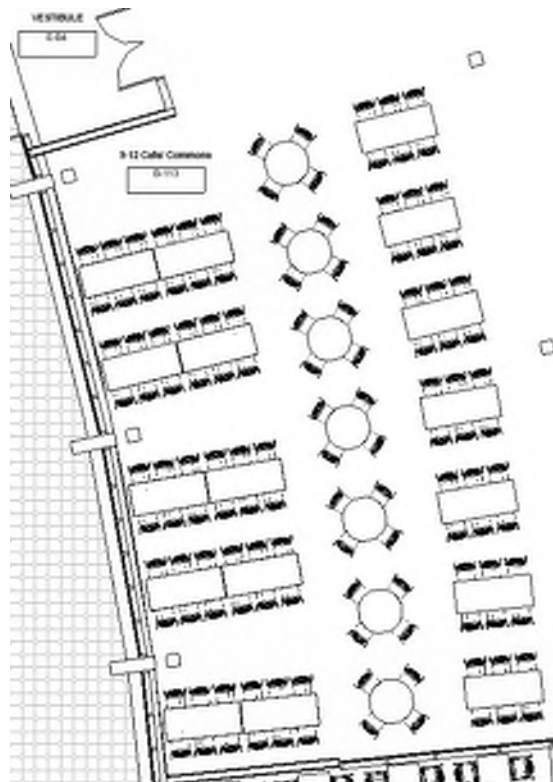
Furnishings: folding cafeteria tables w/attached stools, bistro tables/chairs, booth seating w/tables

Equipment: -

Storage: separate storage

OTHER INFORMATION:

Visibility: N/A





CHAIR/TABLE STORAGE

FUNCTIONAL CRITERIA

Description: Storage
Area: 763SF
Quantity: 1
Occupants: --

LOCATION/ORIENTATION CRITERIA

Users: Teachers/Staff/Students
Adjacencies: Cafeteria
Orientation: -
Views: -

TECHNICAL CRITERIA

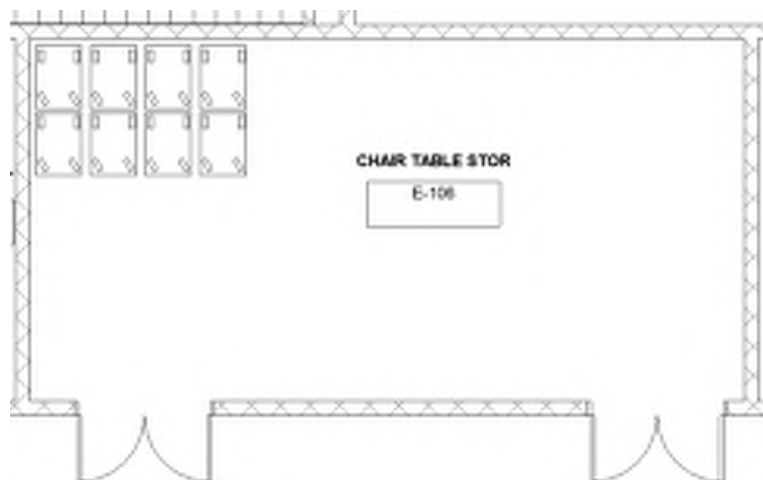
Floor/Base: sealed concrete
Walls: CMU Painted
Ceiling: Painted Exposed
Doors: solid wood doors,
Windows: N/A
Lighting: LED Pendants
Power: convenience outlets
Data/Com: telephone, intercom, wireless access point, local
sound system & wireless clock
Security: cameras throughout building
Acoustical: Refer to Acoustical Report
Mechanical: Refer to Mechanical Narrative
Plumb/Fire: Refer to plumbing/fire protection narrative

FIXTURES / FURNISHINGS

Casework: N/A
Furnishings: N/A
Equipment: Industrial metal shelving, chair dolly
Storage: N/A

OTHER INFORMATION:

Visibility: N/A





MAIN SERVERY

FUNCTIONAL CRITERIA

Description: Food Servery
 Area: 800sf
 Quantity: 1
 Occupants: Varies

Power: Convenience outlets and special receptacles to serve kitchen equipment
 Data/Com: Telephone, intercom, wireless access point, data outlets & wireless clock
 Security: Access control
 Acoustical: None
 Mechanical: Refer to Mechanical Narrative
 Plumb/Fire: Refer to plumbing/fire protection narrative

LOCATION/ORIENTATION CRITERIA

Users: Kitchen Staff, staff / Students at Serving
 Adjacencies: Cafeteria
 Orientation: N/A
 Views: None

FIXTURES / FURNISHINGS

Casework: None
 Furnishings: -
 Equipment: Waste receptacles, small wares
 Storage: -

TECHNICAL CRITERIA

Floor/Base: Epoxy Floor + Base
 Walls: Gypsum Drywall with full height FRP panels
 Ceiling: 2x4 lay in washable, mold and water resistant anti-microbial ceiling tile at 8'-0"

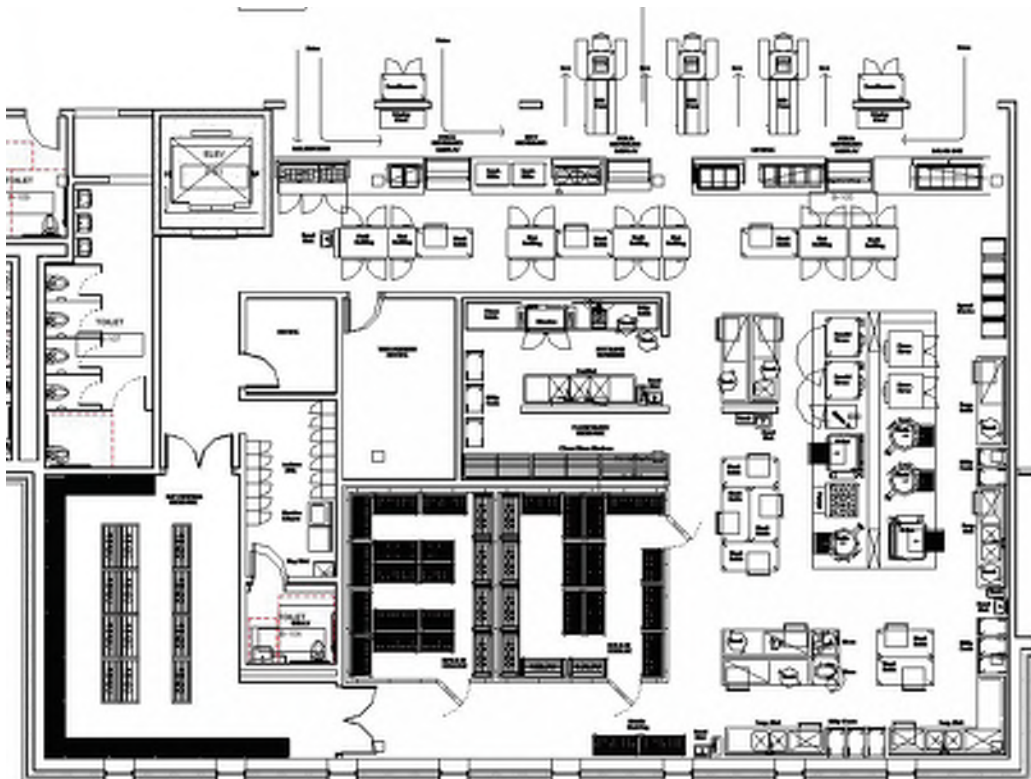
OTHER INFORMATION:

Visibility: N/A

Door/Frame: Solid Wood Door with Hollow Metal Frames; large overhead rolling shutters (2) 10'x10'

Windows: -

Lighting: recessed strip LED with daylight dimming and occupancy sensors





SERVERY

FUNCTIONAL CRITERIA

Description: Food Servery
Area: 800sf
Quantity: 1
Occupants: Varies

LOCATION/ORIENTATION CRITERIA

Users: Kitchen Staff, staff / Students at Serving
Adjacencies: Cafeteria
Orientation: N/A
Views: None

TECHNICAL CRITERIA

Floor/Base: Epoxy Floor + Base
Walls: Gypsum Drywall with full height FRP panels
Ceiling: 2x4 lay in washable, mold and water resistant anti-microbial ceiling tile at 8'-0"

Door/Frame: Solid Wood Door with Hollow Metal Frames; large overhead rolling shutters (2) 10'x10'

Windows: -

Lighting: recessed strip LED with daylight dimming and occupancy sensors

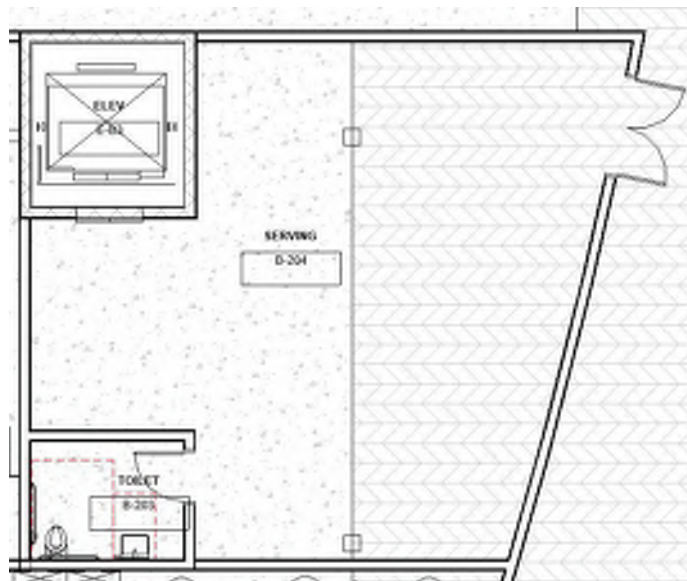
Power: Convenience outlets and special receptacles to serve kitchen equipment
Data/Com: Telephone, intercom, wireless access point, data outlets & wireless clock
Security: Access control
Acoustical: None
Mechanical: Refer to Mechanical Narrative
Plumb/Fire: Refer to plumbing/fire protection narrative

FIXTURES / FURNISHINGS

Casework: None
Furnishings: -
Equipment: Waste receptacles, small wares
Storage: -

OTHER INFORMATION:

Visibility: N/A





KITCHEN

FUNCTIONAL CRITERIA

Description: Kitchen
Area: 3,550 sqft
Quantity: 1
Occupants: varies

LOCATION/ORIENTATION CRITERIA

Users: Kitchen Staff, staff
Adjacencies: Cafeteria, Receiving
Orientation: n/a
Views: None

TECHNICAL CRITERIA

Floor/Base: Epoxy Floor + Base
Walls: Gypsum Drywall with full height FRP panels
Ceiling: 2x4 lay in washable, mold and water resistant anti-microbial ceiling tile at 12'-0"
Door/Frame: Solid Wood Door with Hollow Metal Frames;
Windows: -

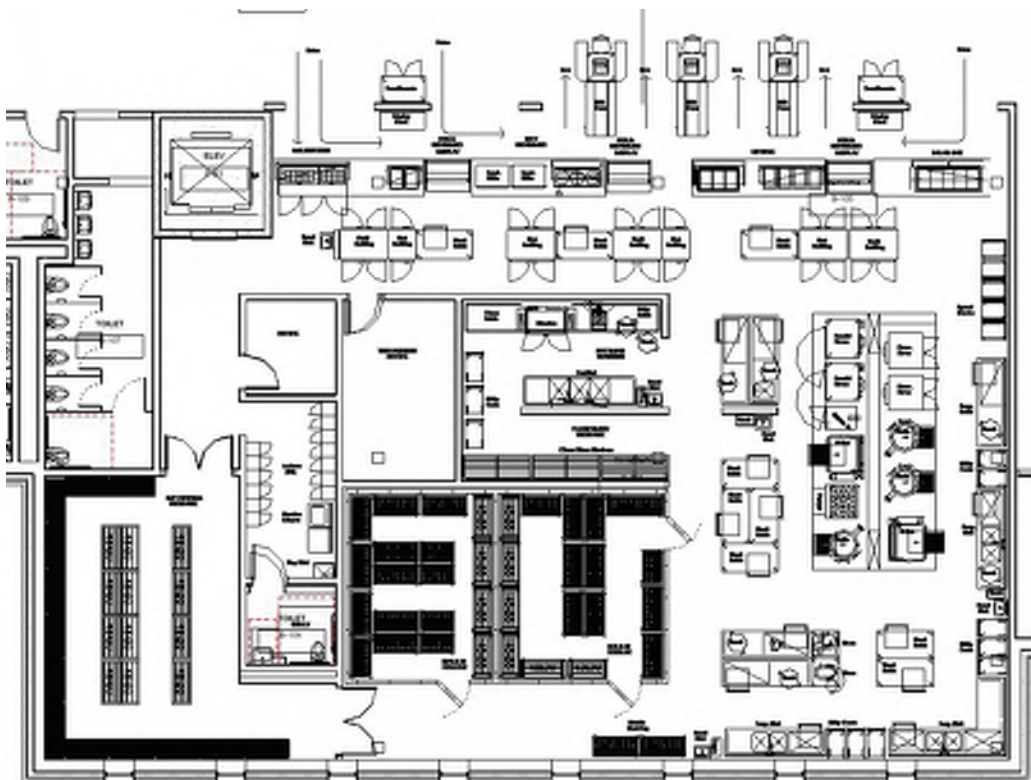
Lighting: recessed strip LED with daylight dimming and occupancy sensors
Power: Convenience outlets and special receptacles to serve kitchen equipment
Data/Com: Telephone, intercom, wireless access point, data outlets & wireless clock
Security: Access control
Acoustical: None
Mechanical: Refer to Mechanical Narrative
Plumb/Fire: Refer to plumbing/fire protection narrative

FIXTURES / FURNISHINGS

Casework: -
Furnishings: -
Equipment: Waste receptacles, kitchen equipment, small wares
Storage: -

OTHER INFORMATION:

Visibility: N/A





STAFF LUNCH ROOM

FUNCTIONAL CRITERIA

Description: teacher/staff lunch area
Area: 863sf
Quantity: 1
Occupants: tbd

Power: convenience outlets as required
Data/Com: telephone, intercom, wireless access point, data outlets
Security: TBD
Acoustical: Refer to Acoustical Report
Mechanical: Refer to Mechanical Narrative
Plumb/Fire: Refer to plumbing/fire protection narrative

LOCATION/ORIENTATION CRITERIA

Users: teachers and staff
Adjacencies: Heart of the Shcool
Orientation: -
Views: -

FIXTURES / FURNISHINGS

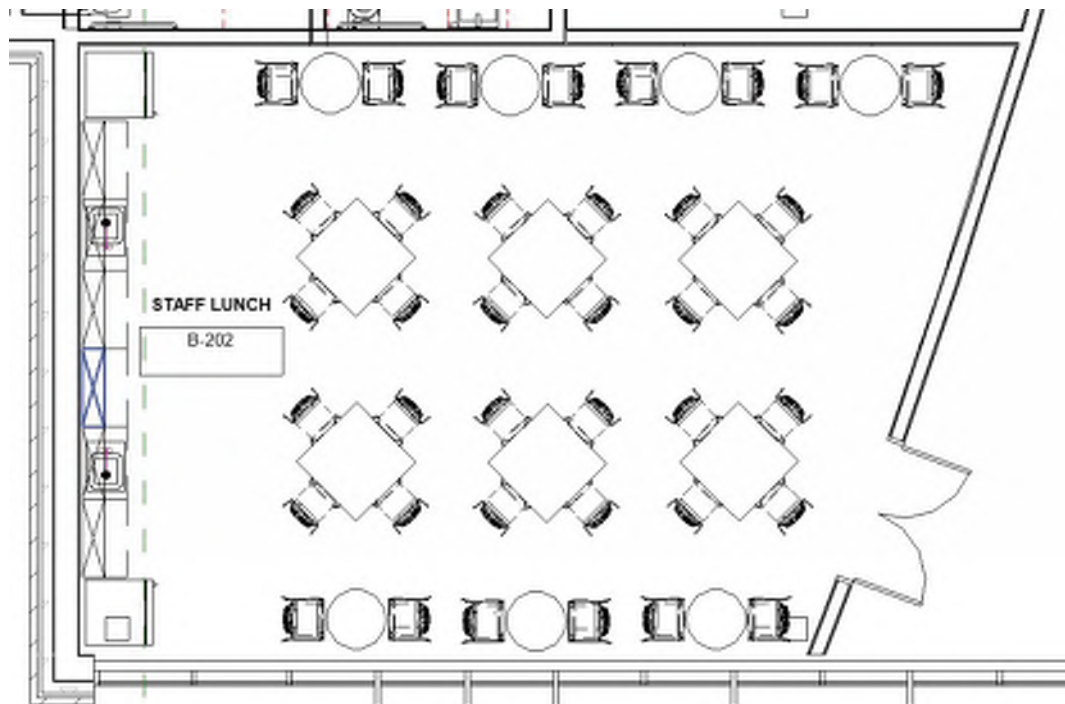
Casework: Sink counter with upper and lower cabinets
Furnishings: Cafe tables, guest chairs
Equipment: Microwave, refrigerator
Storage: In-room storage as noted above

TECHNICAL CRITERIA

Floor/Base: linoleum tile floor/ rubber base
Walls: multi-layer gypsum wall board, painted
Ceiling: high light reflectance ceiling tile (.90 LRV); at 12'-0" AFF
Door/Frame: solid wood door and 3' wide sidelight glass with solid roller shade
Windows: -
Lighting: LED pendant direct/indirect with daylight dimming and occupancy sensors

OTHER INFORMATION:

Visibility: -





MEDICAL SUITE

FUNCTIONAL CRITERIA

Description: Medical Support Suite
 Area: 1,910sf (including toilets, office, Interview Rooms, exam rooms and storage)
 Quantity: 1 suite
 Occupants: --

LOCATION/ORIENTATION CRITERIA

Users: Nurse, Staff, Teachers, Students
 Adjacencies: Gym, Heart of School
 Orientation: South
 Views: Courtyard

TECHNICAL CRITERIA

Floor/Base: Linoleum Tile/rubber base
 Walls: multi-layer gypsum board, painted, FRP walls @ cot
 Ceiling: high light reflectance ceiling tile (.90 V)
 Door/Frame: solid wood doors
 Windows: thermally broken aluminum frames, w/ operable awnings; triple glazed, hurricane glass. Insect screens and mesh roll down mesh shade (10% open.) Built-in gwb light shelf at south facing windows
 Lighting: recessed strip LED with daylight dimming and

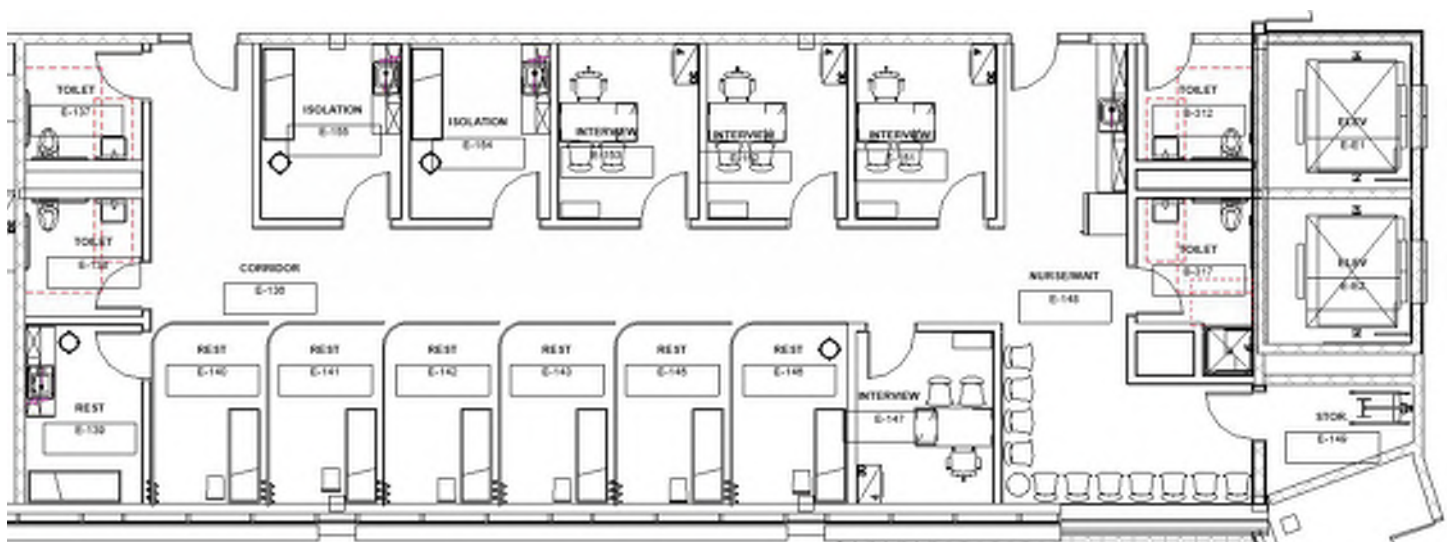
Power: occupancy sensors
 convenience outlets w/ USB
 Data/Com: Telephone, intercom, wireless access point, data outlets & wireless clock, LCD in waiting area, dedicated fax machine
 Security: Similar to Classrooms along with forced entry protection on the corridor side + Motion Detection
 Acoustical: Refer to Acoustical Report
 Mechanical: Refer to Mechanical Narrative
 Plumb/Fire: Refer to plumbing/fire protection narrative

FIXTURES / FURNISHINGS

Casework: Upper/lower cabinets with sink, tall storage cabinets
 Furnishings: Office desk, task chair, lateral file, resting cots, exam table, side tables, waiting chairs, mobile storage unit
 Equipment: Staff computer, medicine cabinet, medicine cart, microwave, refrigerator, ice maker
 Storage: In-room storage as noted above

OTHER INFORMATION:

Visibility: n/a





MAIN OFFICE

FUNCTIONAL CRITERIA

Description: Main Admin/Office
Area: 2,000sf suite
Quantity: 1 Suite: Office/Wait /Toilet (800sf), Duplicating (450sf) Principal Office (350sf) Conference (200sf)
Occupants: -

LOCATION/ORIENTATION CRITERIA

Users: teachers, potentially students
Adjacencies: Front Entry/Security
Orientation: North/West
Views: Entry Plaza

TECHNICAL CRITERIA

Floor/Base: linoleum tile floor /rubber base
Walls: multi-layer gypsum wall board, painted
Ceiling: high light reflectance ceiling tile (.90 LRV);
Door/Frame: solid wood door and 3' wide sidelight glass with solid roller shade
Windows: thermally broken aluminum frames, solar coated glass with operable panes/screens and mesh roll down shade (10% open)
Lighting: LED pendant direct/indirect with daylight dimming and occupancy sensors

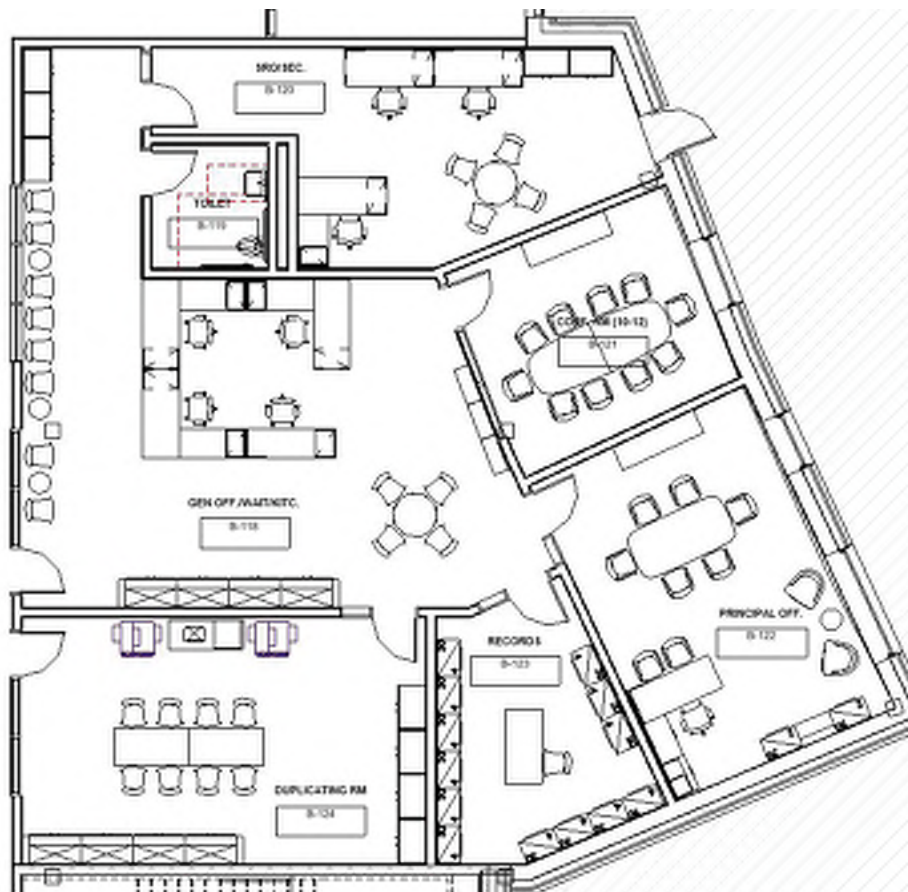
Power: convenience outlets w/ USB
Data/Com: telephone, intercom, wireless access point, data outlets & wireless clock
Security: The office would have camera/intercom and buzzer controls for access into the vestibule, where limited ballistic resistant glass and a second set of locking doors would contain visitors until badged and approved to enter.
Acoustical: Refer to Acoustical Report
Mechanical: Refer to Mechanical Narrative
Plumb/Fire: Refer to plumbing/fire protection narrative

FIXTURES / FURNISHINGS

Casework: Tall storage cabinets, upper/lower cabinets
Furnishings: Office desks, task chairs, meeting tables, guest chairs, side tables, bookcases, lateral files
Equipment: Staff computers, printers, copier
Storage: In-room storage as noted above

OTHER INFORMATION

Visibility: Sidelights at doorway entrances are compatible with the District's standards related to visibility from the corridor.





HOUSE OFFICES

FUNCTIONAL CRITERIA

Description: House Office Suite
 Area: (5) 710sf suites.
 Each suite includes; Deputy Principal Office (150sf), House Admin Workroom (120sf), Asst Principal Office (150sf), AP Admin waiting/Mail (200sf) and Conference Room (200sf)
 Quantity: 5 total suites
 Occupants: -

Lighting: LED pendant direct/indirect with daylight dimming and occupancy sensors
 Power: convenience outlets w/ USB
 Data/Com: telephone, intercom, wireless access point, data outlets & wireless clock
 Security: Similar to Classrooms along with forced entry protection on the corridor side.
 Acoustical: Refer to Acoustical Report
 Mechanical: Refer to Mechanical Narrative
 Plumb/Fire: Refer to plumbing/fire protection narrative

LOCATION/ORIENTATION CRITERIA

Users: teachers, students
 Adjacencies: Front Entry/Security
 Orientation: -
 Views: Lightwell or canal

FIXTURES / FURNISHINGS

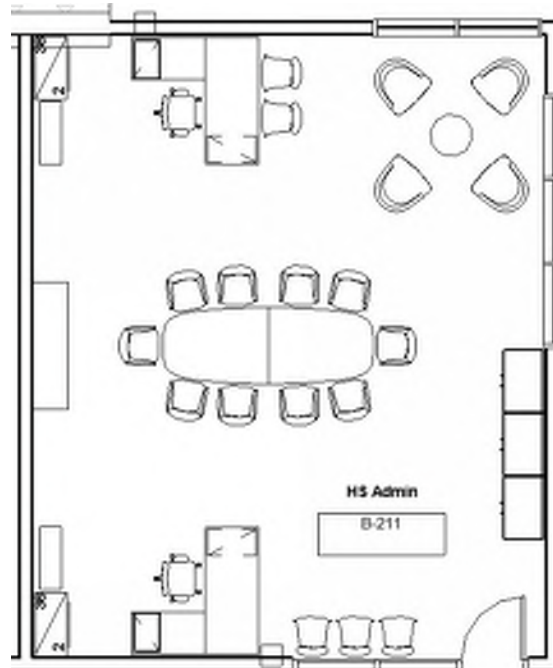
Casework: Tall storage cabinets, upper/lower cabinets, mail sorting bins
 Furnishings: Office desks, task chairs, meeting tables, guest chairs, side tables, bookcases, lateral files
 Equipment: Staff computers, printers, copier
 Storage: In-room storage as noted above

TECHNICAL CRITERIA

Floor/Base: linoleum tile floor/rubber base
 Walls: multi-layer gypsum wall board, painted
 Ceiling: high light reflectance ceiling tile (.90 LRV);
 Door/Frame: solid wood door and 3' wide sidelight glass with solid roller shade
 Windows: (West Side) thermally broken aluminum frames, solar coated glass with operable panes/screens and mesh roll down shade (10% open)
 (East Side) single-hung aluminum clad wood windows, solar coated glass with operable panes/screens and mesh roll down shades (10% open)

OTHER INFORMATION

Visibility: Sidelights at doorway entrances are compatible with the District's standards related to visibility from the corridor.





GUIDANCE SUITE

FUNCTIONAL CRITERIA

Description: Guidance Suite of Offices
 Area: 1 suite at 3400sf includes:
 13 offices (150sf each- 1 Director, 9 Guidance couns, 3 career) Guid Waiting (250sf), Guid Storeroom (200sf) Career Center (800sf) Records Room (200sf)
 Quantity: 1 Suite
 Occupants: -

Lighting: LED pendant direct/indirect with daylight dimming and occupancy sensors
 Power: convenience outlets w/ USB
 Data/Com: telephone, intercom, wireless access point, data outlets & wireless clock
 Security: Similar to Classrooms along with forced entry protection on the corridor side.
 Acoustical: high performance ceiling (.8 NRC/.35 CAC)
 Mechanical: Displacement Ventilation/Radiant Panels
 Plumb/Fire: speaker/strobe alarm & sprinkler system

LOCATION/ORIENTATION CRITERIA

Users: teachers, students, staff
 Adjacencies: Main Lobby
 Orientation: North
 Views: Entry Plaza

FIXTURES / FURNISHINGS

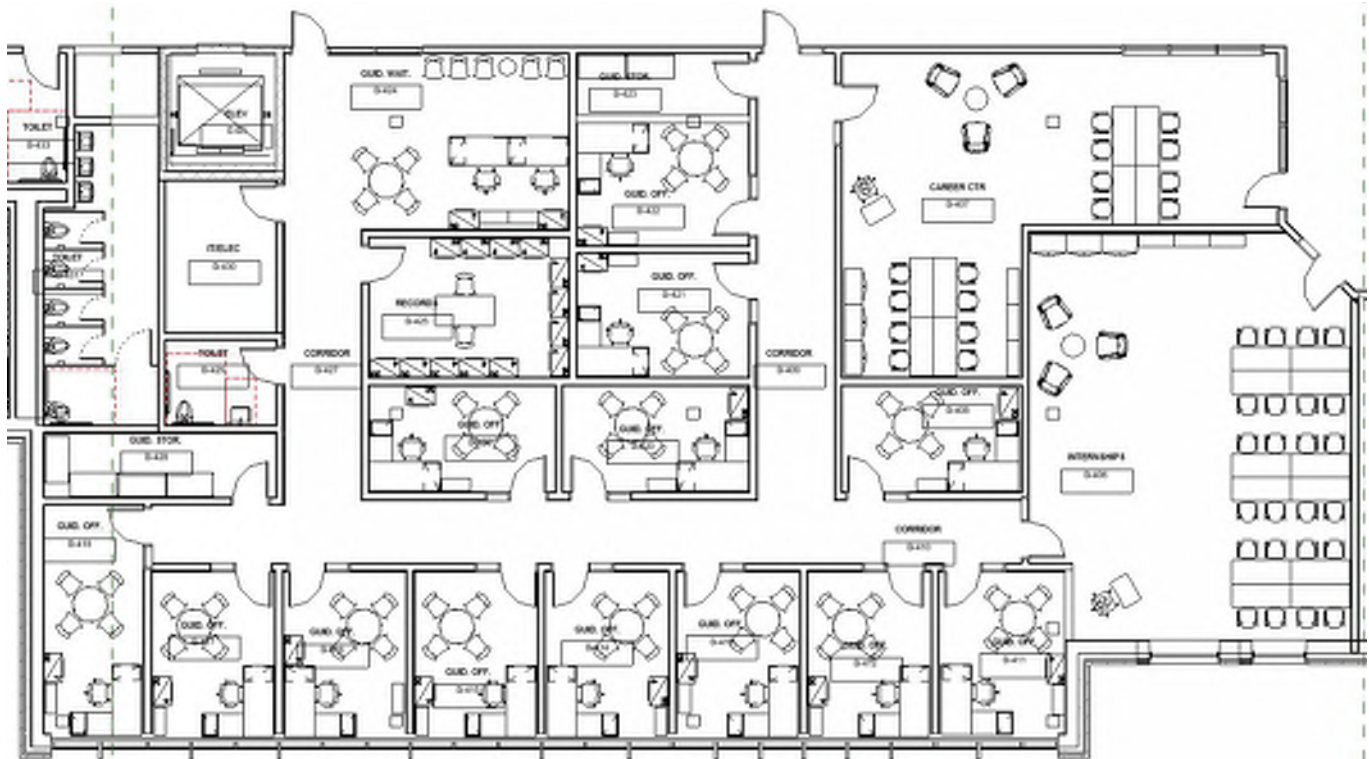
Casework: Tall storage cabinets
 Furnishings: Office desks, task chairs, meeting tables, guest chairs, lateral files, bookcases
 Equipment: Staff computers, printers
 Storage: In-room storage as noted above

TECHNICAL CRITERIA

Floor/Base: linoleum tile floor/rubber base
 Walls: multi-layer gypsum wall board, painted
 Ceiling: high light reflectance ceiling tile (.90 LRV);
 Door/Frame: solid wood door and 3' wide sidelight glass with solid roller shade
 Windows: thermally broken aluminum frames, solar coated glass with operable panes/screens and mesh roll down shade (10% open)

OTHER INFORMATION:

Visibility: Sidelights at doorway entrances are compatible with the District's standards related to visibility from the corridor.





STUDENT SUPPORT SUITE

FUNCTIONAL CRITERIA

Description: Student Support Suite
 Area: 1,500sf Suite includes: SS Center (450sf) and (7) 150sf Social Worker Offices
 Quantity: 1 Suite
 Occupants: -

LOCATION/ORIENTATION CRITERIA

Users: teachers, potentially students
 Adjacencies: Lobby/Security/ Main Office
 Orientation: -
 Views: Lightwell

TECHNICAL CRITERIA

Floor/Base: linoleum tile floor/rubber base
 Walls: multi-layer gypsum wall board, painted
 Ceiling: high light reflectance ceiling tile (.90 LRV);
 Door/Frame: solid wood door and 3' wide sidelight glass with solid roller shade
 Windows: thermally broken aluminum frames, solar coated glass with operable panes/screens and mesh roll down shade (10% open)
 Lighting: LED pendant direct/indirect with daylight dimming and occupancy sensors

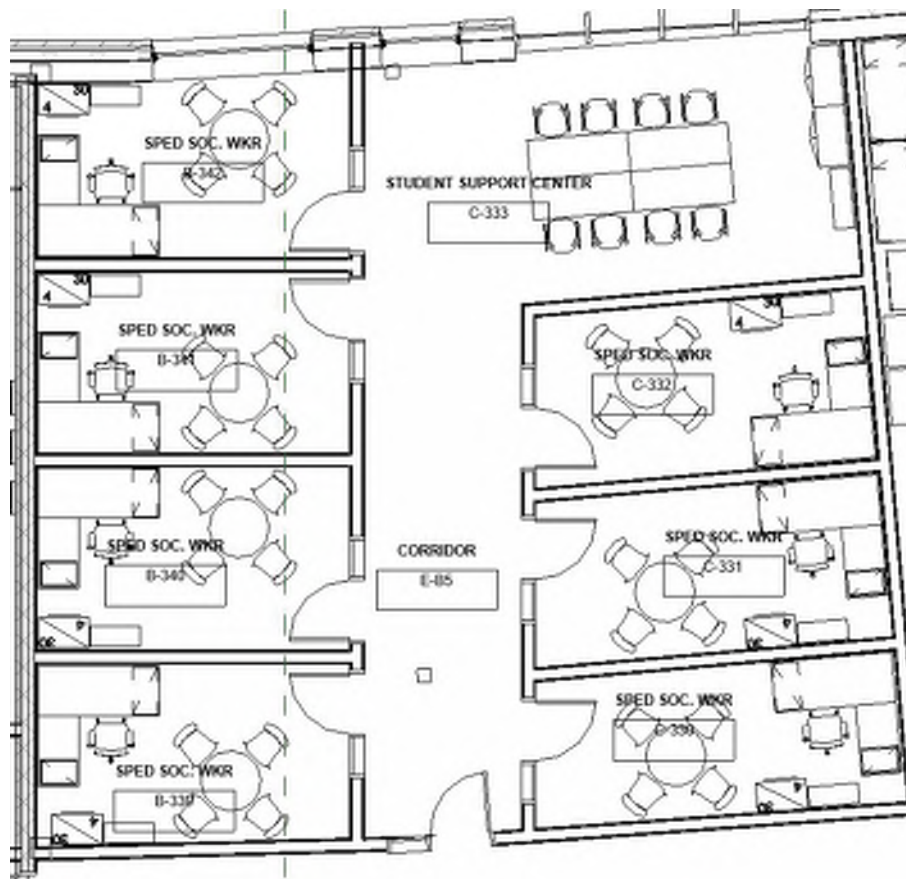
Power: convenience outlets w/ USB
 Data/Com: telephone, intercom, wireless access point, data outlets & wireless clock
 Security: Similar to Classrooms along with forced entry protection on the corridor side.
 Acoustical: high performance ceiling (.8 NRC/.35 CAC)
 Mechanical: Displacement Ventilation/Radiant Panels
 Plumb/Fire: speaker/strobe alarm & sprinkler system

FIXTURES / FURNISHINGS

Casework: Tall storage cabinets
 Furnishings: Office desks, task chairs, meeting tables, guest chairs, lateral files, bookcases
 Equipment: Staff computers, printers
 Storage: In-room storage as noted above

OTHER INFORMATION

Visibility: Sidelights at doorway entrances are compatible with the District's standards related to visibility from the corridor.





SPECIAL EDUCATION – SUITE

FUNCTIONAL CRITERIA

Description: Offices and Supports spaces for Special Education
Area: 1,650sf Suite includes: (2) Sp. Ed Director Offices (150sf each) Business Office (150sf), Spec. Ed Workroom (450sf), Files (450sf) and Conference (300sf)

Quantity: 1 suite

Occupants:

LOCATION/ORIENTATION CRITERIA

Users: special education students, 2 teachers (1 para) and Math, ELA & SS specialists

Adjacencies: clustered with classroom/science clusters for each grade grouping

Orientation: north/south exposure for daylight control

Views: outside

TECHNICAL CRITERIA

Floor/Base: linoleum tile floor/rubber base

Walls: multi-layer gypsum board, painted

Ceiling: high light reflectance ceiling tile (.90 LRV)

Door/Frame: solid wood doors and 3' wide sidelight glass with solid roller shade

Windows: thermally broken aluminum frames, solar coated glass with operable panes/screens and mesh roll down shade (10% open)

Lighting: LED pendant direct/indirect with daylight dimming and occupancy sensors

Power: convenience outlets w/ USB
Data/Com: telephone, intercom, wireless access point, data outlets, presentation outlet, data projector, sound reinforcement & wireless clock
Security: A cluster of rooms located within a lock-off zone (academic wing). The suite of rooms can be locked-off from the corridor just as classrooms are classrooms

Acoustical: high performance ceiling (.8 NRC/.35 CAC)

Mechanical: Displacement Ventilation/Radiant Panels

Plumb/Fire: speaker/strobe alarm & sprinkler system

FIXTURES / FURNISHINGS

Casework: Tall storage cabinets

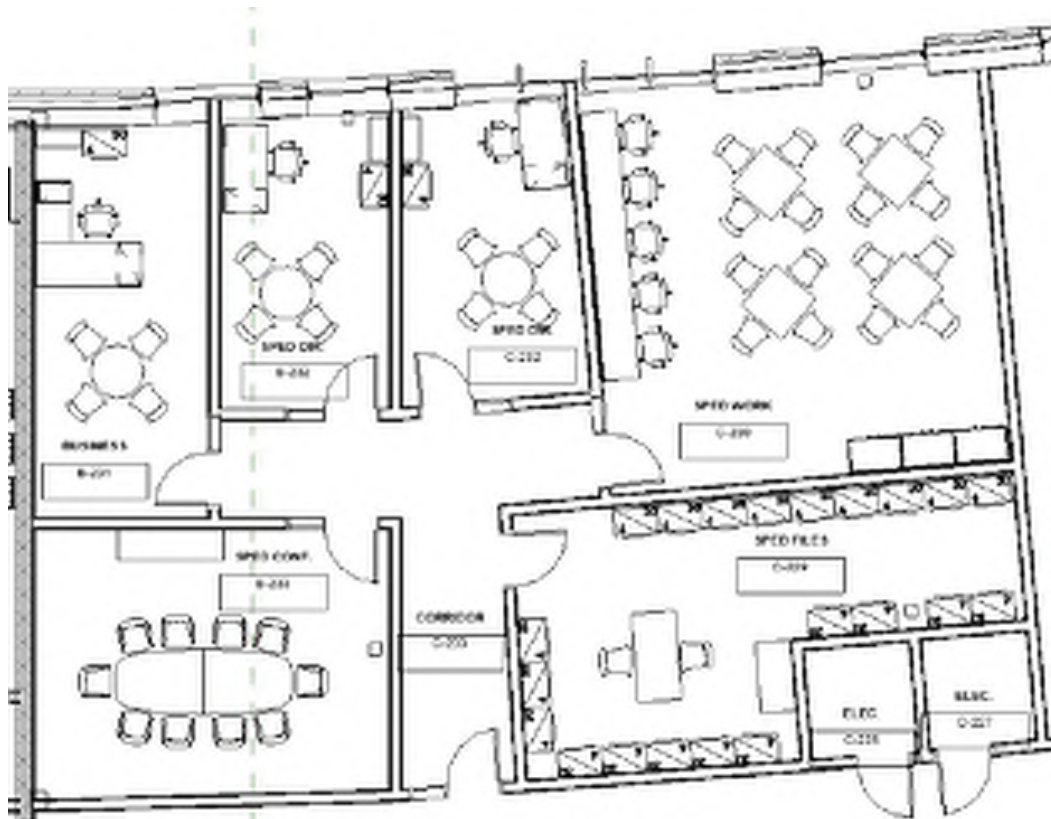
Furnishings: Office desks, task chairs, meeting tables, guest chairs, lateral files, bookcases

Equipment: Staff computers, printers

Storage: In-room storage as noted above

OTHER INFORMATION:

Visibility: Sidelights at doorway entrances are compatible with the District's standards related to visibility from the corridor.





CUSTODIAL STORAGE & OFFICE

FUNCTIONAL CRITERIA

Description: Custodial Areas

Area: 3,463sf suite (Office, Workshop, Storage, Recycling//Trash, Receiving, Storeroom, Telecom)

Quantity: 1

Occupants: -

LOCATION/ORIENTATION CRITERIA

Users: Custodial and Facilities Staff

Adjacencies: Kitchen and Loading

Orientation: South

Views: N/A

TECHNICAL CRITERIA

Floor/Base: Sealed Concrete/rubber base

Walls: Epoxy painted CMU

Ceiling: high light reflectance ceiling tile (.90 LRV); flat at approximately 8'-0" at offices, exposed painted at other areas

Door/Frame: Hollow Metal doors with hollow metal frames- overhead garage door at loading

Windows: -

Lighting: Cage protected LED strip lights with occupancy sensors

Power: convenience outlets w/ USB

Data/Com: Telephone, intercom, wireless access point, data outlets

Security: This area functions as a suite of rooms with direct access to both a main corridor and outside. The exterior access would include a video-intercom system, but should refrain from having buzzer access to ensure direct interaction with those delivering goods. Both access points would have forced entry protection and card-key access. The exterior would also have intrusion detection.

Acoustical: None

Mechanical: Displacement Ventilation/Radiant Panels

Plumb/Fire: speaker/strobe alarm & sprinkler system

FIXTURES / FURNISHINGS

Casework: N/A

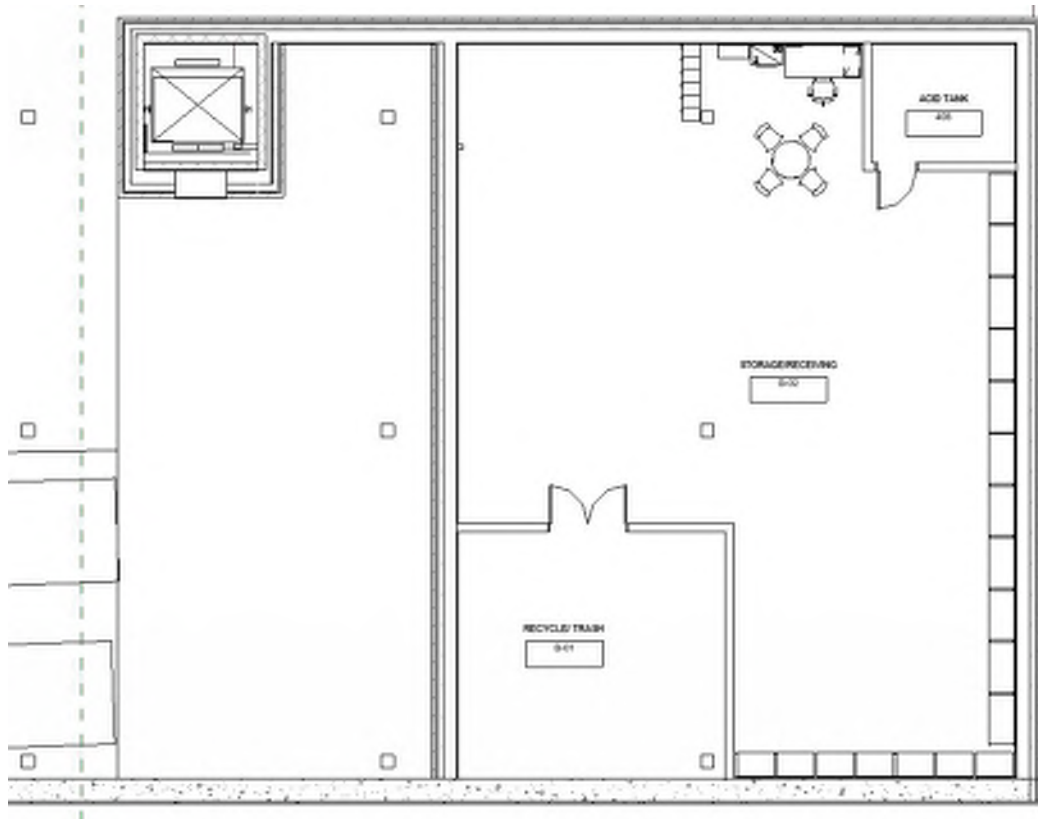
Furnishings: Office desk, task chair, work bench, stools, side table, guest chairs, flat file, bookcase

Equipment: Metal industrial shelving, lockers

Storage: -

OTHER INFORMATION:

Visibility: N/A





SRO/SECURITY

FUNCTIONAL CRITERIA

Description: School Resource Office/Security

Area: 400sf

Quantity: 1

Occupants: +/-2

Security: ---

Acoustical: Refer to Acoustical Report

Mechanical: Refer to Mechanical Narrative

Plumb/Fire: Refer to plumbing/fire protection narrative

LOCATION/ORIENTATION CRITERIA

Users: SRO/Security Officers

Adjacencies: Main Entry/ Main Office

Orientation: East

Views: Front Entry

FIXTURES / FURNISHINGS

Casework: N/A

Furnishings: Office desk, task chair, lateral file, bookcase

Equipment: Staff computer

Storage: N/A

TECHNICAL CRITERIA

Floor/Base: Linoleum, RB

Walls: Solid-filled CMU

Ceiling: high light reflectance ceiling tile (.90 LRV);
flat at approximately 8'-0" at offices,

Door/Frame: Security Door/Frame

Windows: -

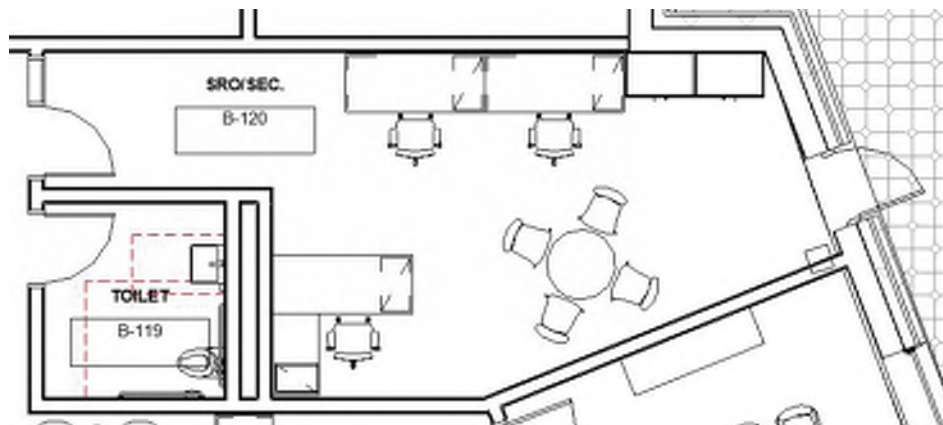
Lighting: LED lay-ins

Power: convenience outlets w/ USB

Data/Com: Telephone, intercom, wireless access point,
data outlets

OTHER INFORMATION:

Visibility: N/A





PARENT INFO CENTER

FUNCTIONAL CRITERIA

Description: Information Center for Parents
Area: 400sf
Quantity: 1
Occupants: -

Data/Com: Telephone, intercom, wireless access point, data outlets
Security: ---
Acoustical: Refer to Acoustical Report
Mechanical: Refer to Mechanical Narrative
Plumb/Fire: Refer to plumbing/fire protection narrative

LOCATION/ORIENTATION CRITERIA

Users: Parents/Staff/Students
Adjacencies: Heart of the School
Orientation: -
Views: -

FIXTURES / FURNISHINGS

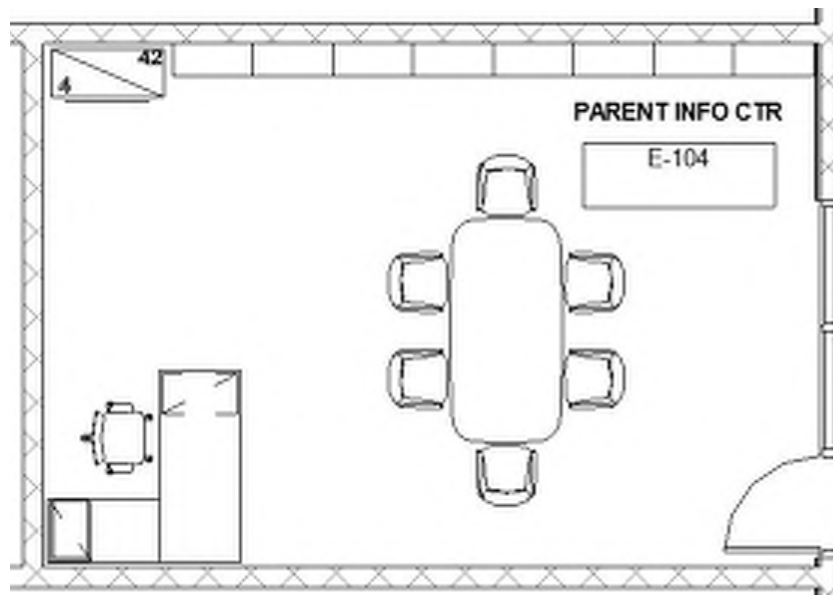
Casework: Tall storage cabinets
Furnishings: Office desk, task chair, meeting table, guest chairs, lateral file, bookcase
Equipment: Staff computer
Storage: In-room storage as noted above

TECHNICAL CRITERIA

Floor/Base: Linoleum, RB
Walls: Solid-filled CMU
Ceiling: high light reflectance ceiling tile (.90 LRV); flat at approximately 8'-0" at offices,
Door/Frame: Interior Storefront+ Aluminum/Glass Door
Windows: -
Lighting: LED lay-ins
Power: convenience outlets w/ USB

OTHER INFORMATION:

Visibility: N/A





STUDENT ID/IT SUPPORT

FUNCTIONAL CRITERIA

Description: Student ID and IT Support Rooms
 Area: 250sf
 Quantity: 2
 Occupants: -

Security: ---
 Acoustical: Refer to Acoustical Report
 Mechanical: Refer to Mechanical Narrative
 Plumb/Fire: Refer to plumbing/fire protection narrative

LOCATION/ORIENTATION CRITERIA

Users: Staff/Students
 Adjacencies: Heart of the School/ Centrally Located
 Orientation: -
 Views: -

FIXTURES / FURNISHINGS

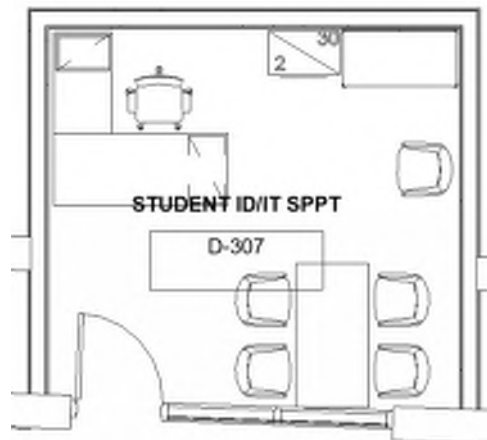
Casework: N/A
 Furnishings: Office desk, task chair, lateral file, bookcase, guest chair, meeting table, metal shelving
 Equipment: Staff computer
 Storage: -

TECHNICAL CRITERIA

Floor/Base: Linoleum, RB
 Walls: Solid-filled CMU
 Ceiling: high light reflectance ceiling tile (.90 LRV); flat at approximately 8'-0" at offices,
 Door/Frame: Interior Storefront+ Aluminum/Glass Door
 Windows: -
 Lighting: LED lay-ins
 Power: convenience outlets w/ USB
 Data/Com: Telephone, intercom, wireless access point, data outlets

OTHER INFORMATION:

Visibility: N/A





COMMUNITY HEALTH CENTER

FUNCTIONAL CRITERIA

Description: Community Health Center
Area: 1,400sf
Quantity: 1 Suite
Occupants: -

LOCATION/ORIENTATION CRITERIA

Users: staff and patients
Adjacencies: Heart of the School
Orientation: -
Views: Yes

TECHNICAL CRITERIA

Floor/Base: linoleum tile floor /rubber base
Walls: multi-layer gypsum wall board, painted
Ceiling: high light reflectance ceiling tile (.90 LRV);
Door/Frame: solid wood door and 3' wide sidelight glass with solid roller shade
Windows: thermally broken aluminum frames, w/ operable awnings; triple glazed, hurricane glass. Insect screens and mesh roll down mesh shade (10% open.) Built-in gwb light shelf at south facing windows

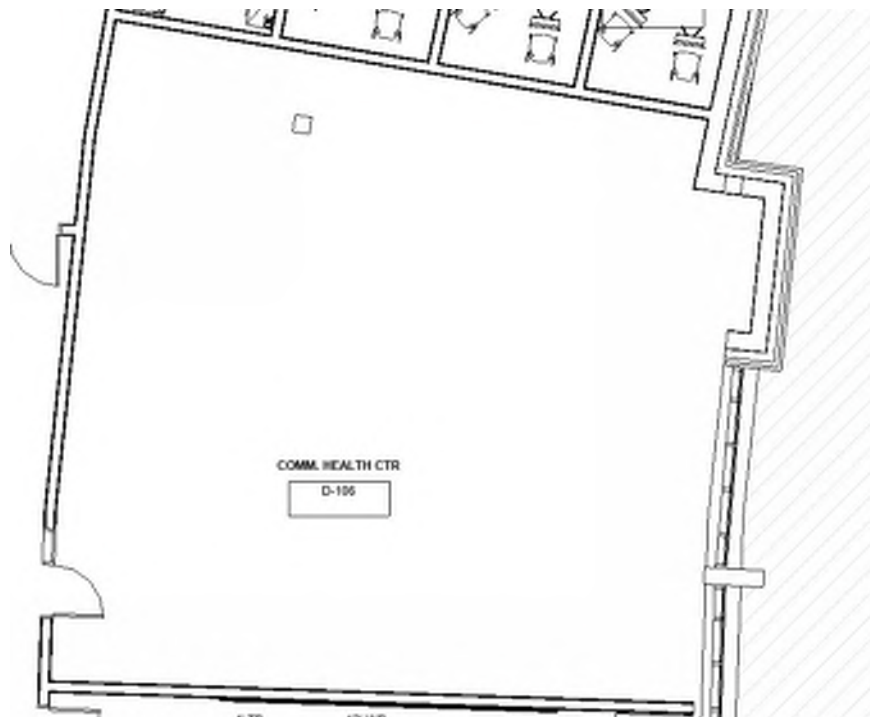
Lighting: LED pendant direct/indirect with daylight dimming and occupancy sensors
Power: convenience outlets as required
Data/Com: telephone, intercom, wireless access point, data outlets & wireless clock
Security: TBD
Acoustical: Refer to Acoustical Report
Mechanical: Refer to Mechanical Narrative
Plumb/Fire: Refer to plumbing/fire protection narrative

FIXTURES / FURNISHINGS

Casework: Upper/lower cabinets with sink, tall storage cabinets
Furnishings: Office desk, task chair, lateral file, exam table, side table, waiting chairs, mobile storage unit, lymphedema chair
Equipment: Staff computer, medicine cabinet, medicine cart, microwave, refrigerator, ice maker
Storage: In-room storage as noted above

OTHER INFORMATION:

Visibility: -





CREDIT UNION

FUNCTIONAL CRITERIA

Description: Bank Branch
Area: 400sf
Quantity: -
Occupants: -

LOCATION/ORIENTATION CRITERIA

Users: Staff/Students
Adjacencies: Heart of the School
Orientation: -
Views: -

TECHNICAL CRITERIA

Floor/Base: Linoleum Tile/Rubber Base
Walls: multi-layer gypsum board, painted
Ceiling: high light reflectance ceiling tile (.90 LRV);
Door/Frame: solid wood doors and 3' wide sidelight glass with solid roller shade
Windows: thermally broken aluminum frames, solar coated glass with operable panes/screens and mesh roll down shade (10% open)
Lighting: LED pendant direct/indirect with daylight dimming and occupancy sensors

Power: convenience outlets w/ USB, cord reels
Data/Com: telephone, intercom, wireless access point, data outlets, presentation outlet, data projector, sound reinforcement & wireless clock
Security: YES
Acoustical: Refer to Acoustical Report
Mechanical: Refer to Mechanical Narrative
Plumb/Fire: Refer to plumbing/fire protection narrative

FIXTURES / FURNISHINGS

Casework: -
Furnishings: Bench
Equipment: -
Storage: -

OTHER INFORMATION:

Visibility: -





SECOND HAND CLOTHING

FUNCTIONAL CRITERIA

Description: space for storage of materials to support students
Area: 300sf
Quantity: 1
Occupants: varies

LOCATION/ORIENTATION CRITERIA

Users: staff, students and parents
Adjacencies: -
Orientation: -
Views: -

TECHNICAL CRITERIA

Floor/Base: linoleum tile floor/ rubber base
Walls: multi-layer gypsum wall board, painted
Ceiling: high light reflectance ceiling tile (.90 LRV);
9'-0" ACT, GWB soffit at window heads
Door/Frame: solid wood door and 3' wide sidelight glass with
solid roller shade
Windows: n/a

Lighting: LED pendant direct/indirect with daylight dimming and occupancy sensors
Power: convenience outlets as required
Data/Com: telephone, intercom, wireless access point, data outlets

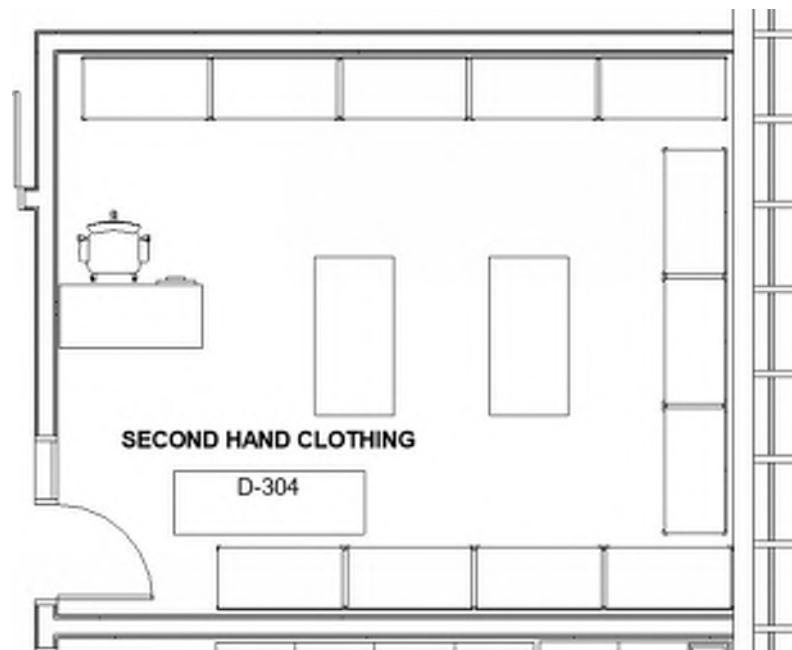
Security:
Acoustical: Refer to Acoustical Report
Mechanical: Refer to Mechanical Narrative
Plumb/Fire: Refer to plumbing/fire protection narrative

FIXTURES / FURNISHINGS

Casework: Tall storage cabinets
Furnishings: Industrial metal shelving, check-out desk, task chair
Equipment: Staff Computer
Storage: In-room storage as noted above

OTHER INFORMATION:

Visibility: -





ATHLETIC TRAINER

FUNCTIONAL CRITERIA

Description: Athletic Training Room for Athletes
Area: 450SF
Quantity: 1
Occupants: --

Security: cameras throughout building
Acoustical: Refer to Acoustical Report
Mechanical: Refer to Mechanical Narrative
Plumb/Fire: Refer to plumbing/fire protection narrative

LOCATION/ORIENTATION CRITERIA

Users: Teachers/Staff/Students/Trainers
Adjacencies: Gymnasium, Lockers, Trainer
Orientation: -
Views: -

FIXTURES / FURNISHINGS

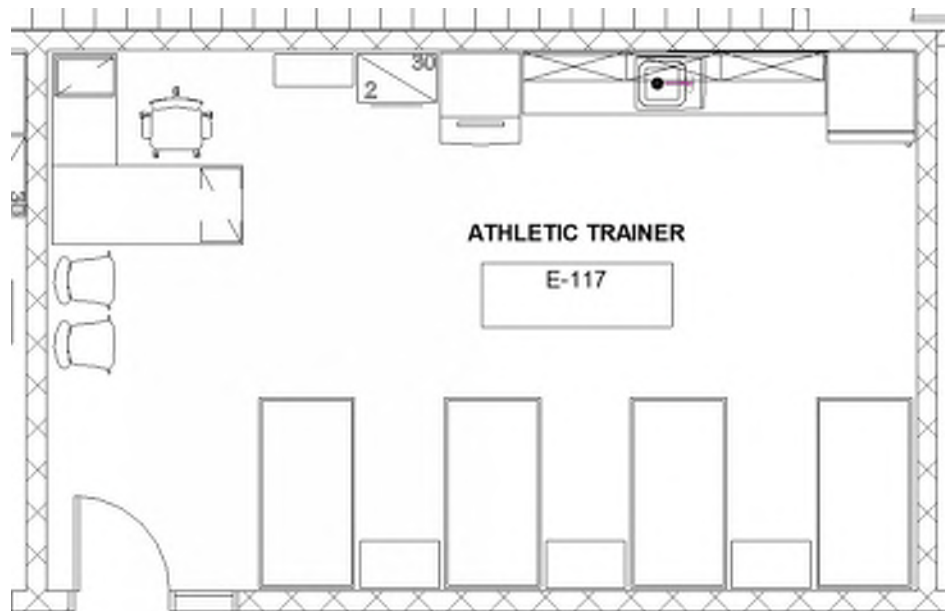
Casework: Tall storage cabinets
Furnishings: Office desk, task chair, exam/taping tables, waiting chairs
Equipment: Medicine cabinet, refrigerator, ice maker, staff computer
Storage: In-room storage as noted above

TECHNICAL CRITERIA

Floor/Base: Rubber Athletic Flooring
Walls: CMU Acoustical walls
Ceiling: Painted Exposed Acoustical Deck
Doors: solid wood doors,
Windows: thermally broken aluminum frames, w/ operable awnings; triple glazed, hurricane glass. Insect screens and mesh roll down mesh shade (10% open.) Built-in gwb light shelf at south facing windows
Lighting: LED Pendants
Power: convenience outlets
Data/Com: telephone, intercom, wireless access point, local sound system & wireless clock

OTHER INFORMATION:

Visibility: N/A





INTERNSHIP SUITE

FUNCTIONAL CRITERIA

Description: Learning Space+ Suite
 Area: 1,200sf (20 computers, 3 offices and conference room)
 Quantity: 1
 Occupants: -

LOCATION/ORIENTATION CRITERIA

Users: Parents/Staff/Students
 Adjacencies: -
 Orientation: -
 Views: -

TECHNICAL CRITERIA

Floor/Base: Linoleum, RB
 Walls: Solid-filled CMU
 Ceiling: high light reflectance ceiling tile (.90 LRV); flat at approximately 8'-0" at offices,
 Door/Frame: Interior Storefront+ Aluminum/Glass Door
 Windows: -
 Lighting: LED lay-ins
 Power: convenience outlets w/ USB
 Data/Com: Telephone, intercom, wireless access point, data outlets

Security: ---
 Acoustical: Refer to Acoustical Report
 Mechanical: Refer to Mechanical Narrative
 Plumb/Fire: Refer to plumbing/fire protection narrative

FIXTURES / FURNISHINGS

Casework: Tall storage cabinets
 Furnishings: Computer tables, student chairs, teacher desk, teacher task chair, meeting table, guest chairs, office desks, office task chair, lateral file, book case
 Equipment: Staff computer, teacher computer, student computers
 Storage: In-room storage as noted above

OTHER INFORMATION:

Visibility: N/A

